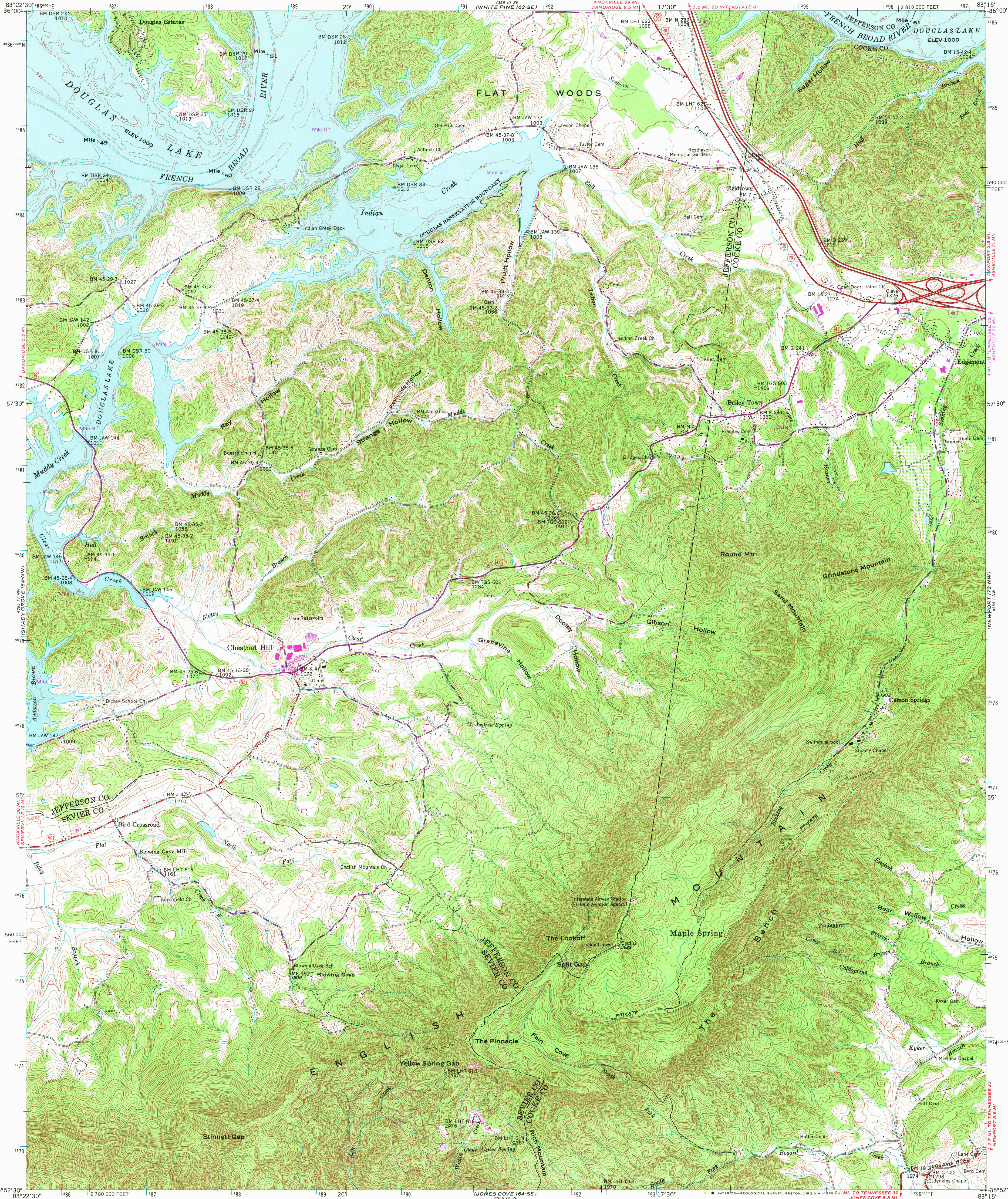


UNITED STATES
DEPARTMENT OF THE INTERIOR
GEOLOGICAL SURVEY

UNITED STATES
TENNESSEE VALLEY AUTHORITY
MAPPING SERVICES BRANCH

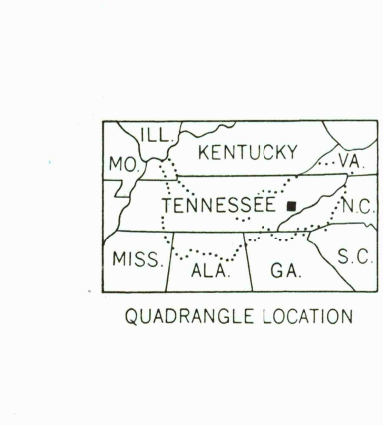
CHESTNUT HILL QUADRANGLE
TENNESSEE
7.5 MINUTE SERIES (TOPOGRAPHIC) 164-NE



Mapped and edited by Tennessee Valley Authority
Published by the Geological Survey
Control by NOS/NOAA, USGS, WPA and TVA
Revised by TVA in 1961 by photogrammetric methods using
aerial photographs taken 1959 and by reference to TVA-USGS
quadrangle dated 1939. Map field checked by TVA, 1961
Polyconic projection, 10,000-foot grid ticks based on Tennessee
coordinate system, 1000-meter Universal Transverse Mercator
grid ticks, zone 17, shown in blue. 1927 North American Datum
To place on the predicted North American Datum 1983 move
the projection lines 7 meters south and 10 meters west as
shown by dashed corner ticks
Fine red dashed lines indicate selected fence and field lines
visible on aerial photographs. This information is unchecked

Revisions shown in purple and woodland compiled by
The Tennessee Valley Authority from aerial photographs
taken 1977 and other source data. This information
not field checked. Map edited 1980

SCALE 1:24,000
CONTOUR INTERVAL 20 FEET
DASHED LINES REPRESENT HALF-INTERVAL CONTOURS
NATIONAL GEODETIC VERTICAL DATUM OF 1929
THIS MAP COMPLIES WITH NATIONAL MAP ACCURACY STANDARDS
FOR SALE BY U.S. GEOLOGICAL SURVEY, RESTON, VIRGINIA 22092
TENNESSEE DIVISION OF GEOLOGY, NASHVILLE, TENN. 37219
U.S. TENNESSEE VALLEY AUTHORITY, CHATTANOOGA, TENN. 37401 OR KNOXVILLE, TENN. 37902
A FOLDER DESCRIBING TOPOGRAPHIC MAPS AND SYMBOLS IS AVAILABLE ON REQUEST



ROAD CLASSIFICATION (TVA 164-NE)
Primary highway, all weather, hard surface
Secondary highway, all weather, hard surface
Light-duty road, all weather, improved surface
Unimproved road, fair or dry weather
Interstate Route
U. S. Route
State Route
Chestnut Hill, Tenn.
N3552.5-W83157.5
1961
PHOTOREVISED 1980
DMA 4355 IV NE-SERIES V841

DEC 9 1980
2100