

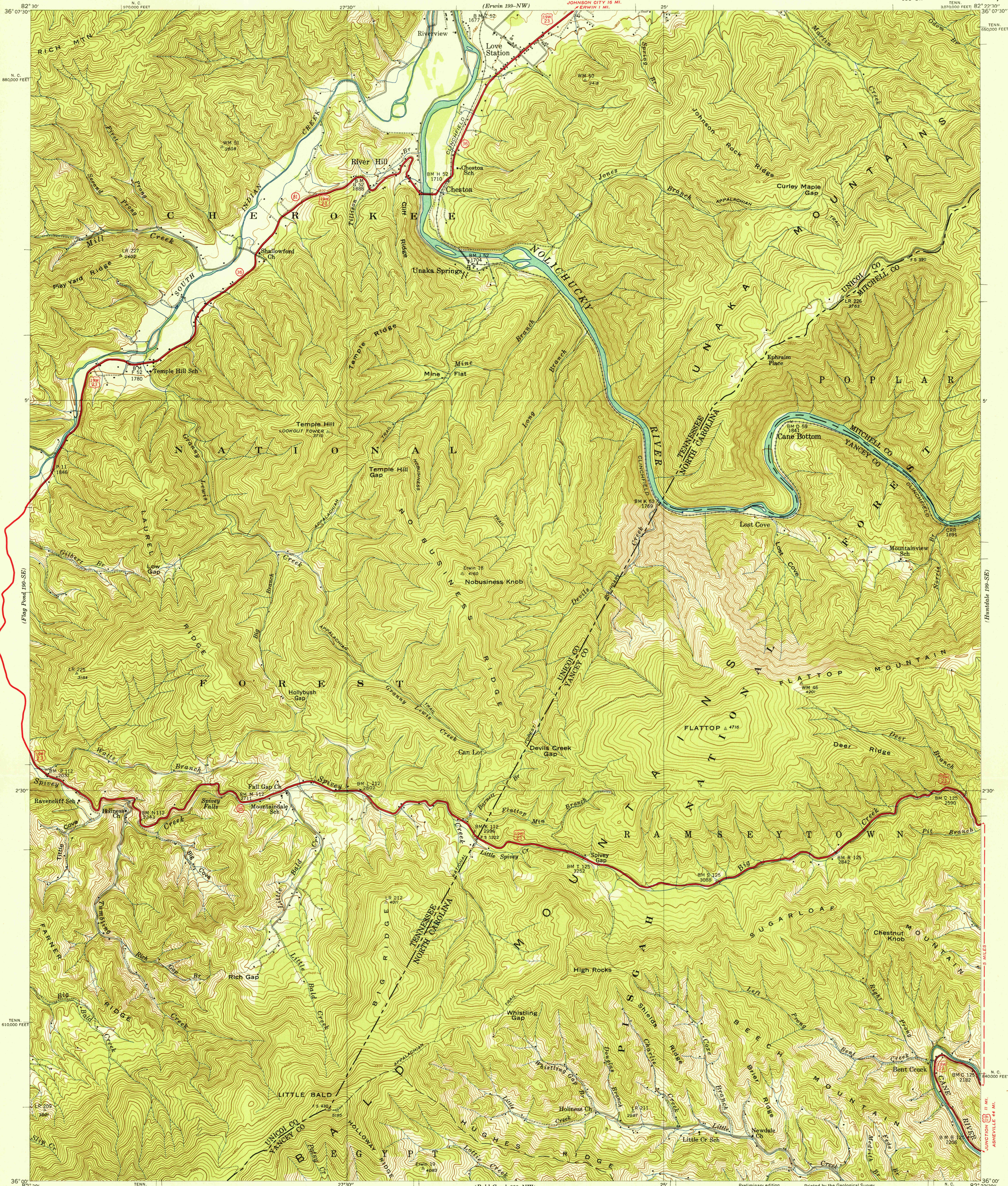
(Caption)
100-102
N. C.
880,000 FEET

UNITED STATES
TENNESSEE VALLEY AUTHORITY
MAPS AND SURVEYS DIVISION

U. S. G. S.
FILE COPY
Inspection and Editing

TENNESSEE-NORTH CAROLINA
CHESTOA QUADRANGLE
199-SW

(Caption)
100-102
TENN.
550,000 FEET



Control by USC&GS, USGS, and TVA
Topography by Fairchild Aerial Surveys, Inc.
by stereophotogrammetric process
Field examination by Tennessee Valley Authority, 1939
Office inspection and review by the Geological Survey
Maps distributed by the Geological Survey

Scale: 24000
1 0 1 5000 10000 Feet
1 0 1 5000 10000 Meters
Contour interval 40 feet
Datum is mean sea level

Printed by the Geological Survey
Polyconic projection, 1927 North American datum
10000 foot grid based on Tennessee and North Carolina rectangular coordinate systems
USGS
HISTORICAL FILE
TOPOGRAPHIC DIVISION
CHESTOA, TENN.-N. C.
199-SW
Edition of 1940
N3600-W82225/75
MAY 8 1940

FILE COPY
Inspection and Editing