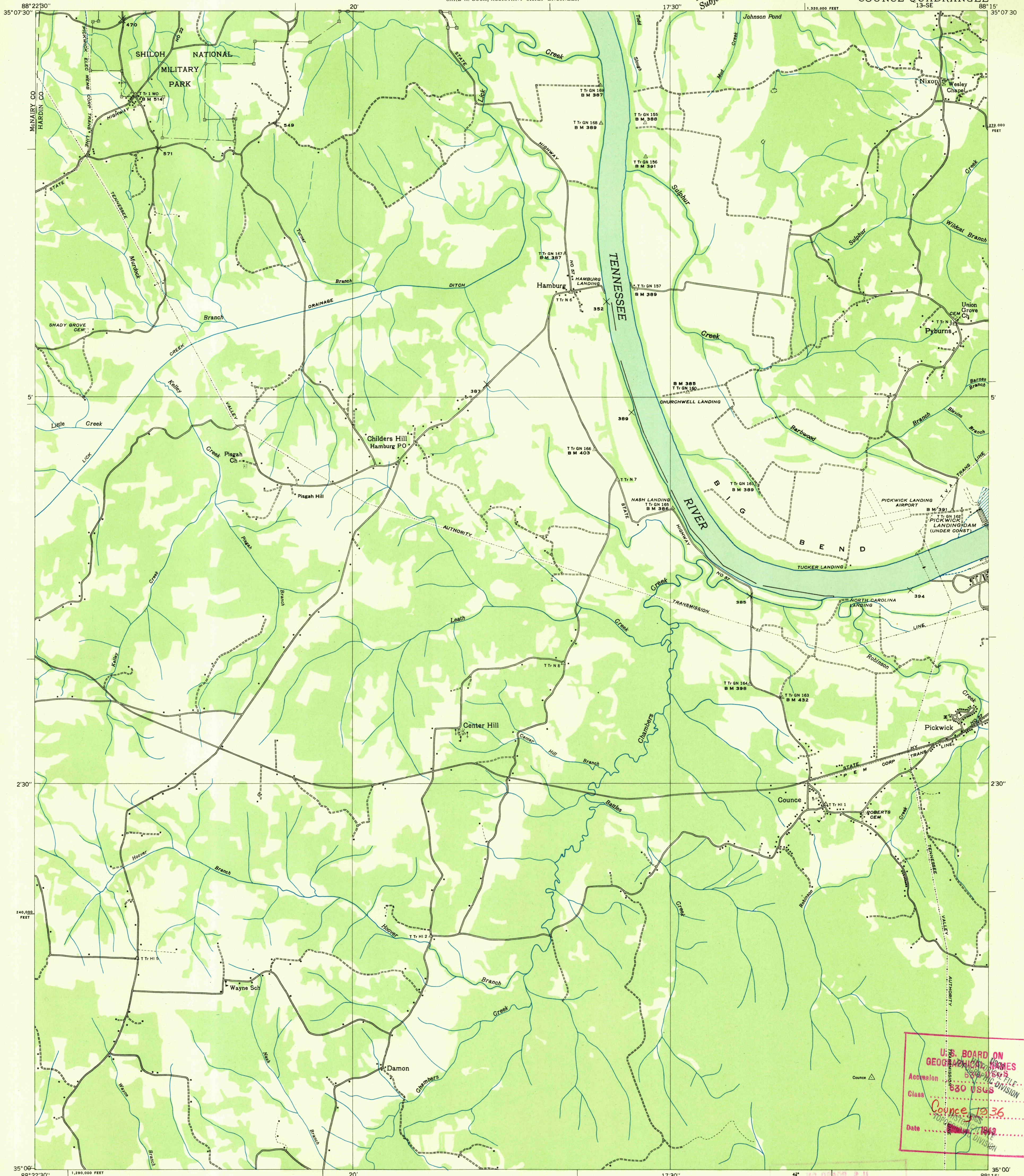


Advance sheet
Subject to correction



Albert Pike, Division Engineer
Compiled by U. S. Geological Survey from aerial photographs
Control by U. S. Geological Survey, U. S. Coast and Geodetic Survey,
Corps of Engineers, U. S. Army and Tennessee Valley Authority
Field examination in 1936

U. S. Board on
Geographical Names

Datum is mean sea level

TRUE NORTH
MAGNETIC NORTH
APPROXIMATE MEAN
DECLINATION, 1986

USGS
HISTORICAL FILE
TOPOGRAPHIC DIVISION

Polyconic projection. 1927 North American datum
10,000 foot grid based on Tennessee
rectangular coordinate system

Trail
Sinks
Probable drainage
COUNCE, TENN.
13-SE

U. S. BOARD ON
GEOGRAPHICAL NAMES
Accession 630 USGS
Class Counce 13-SE
Date 2000
TOPOGRAPHIC DIVISION