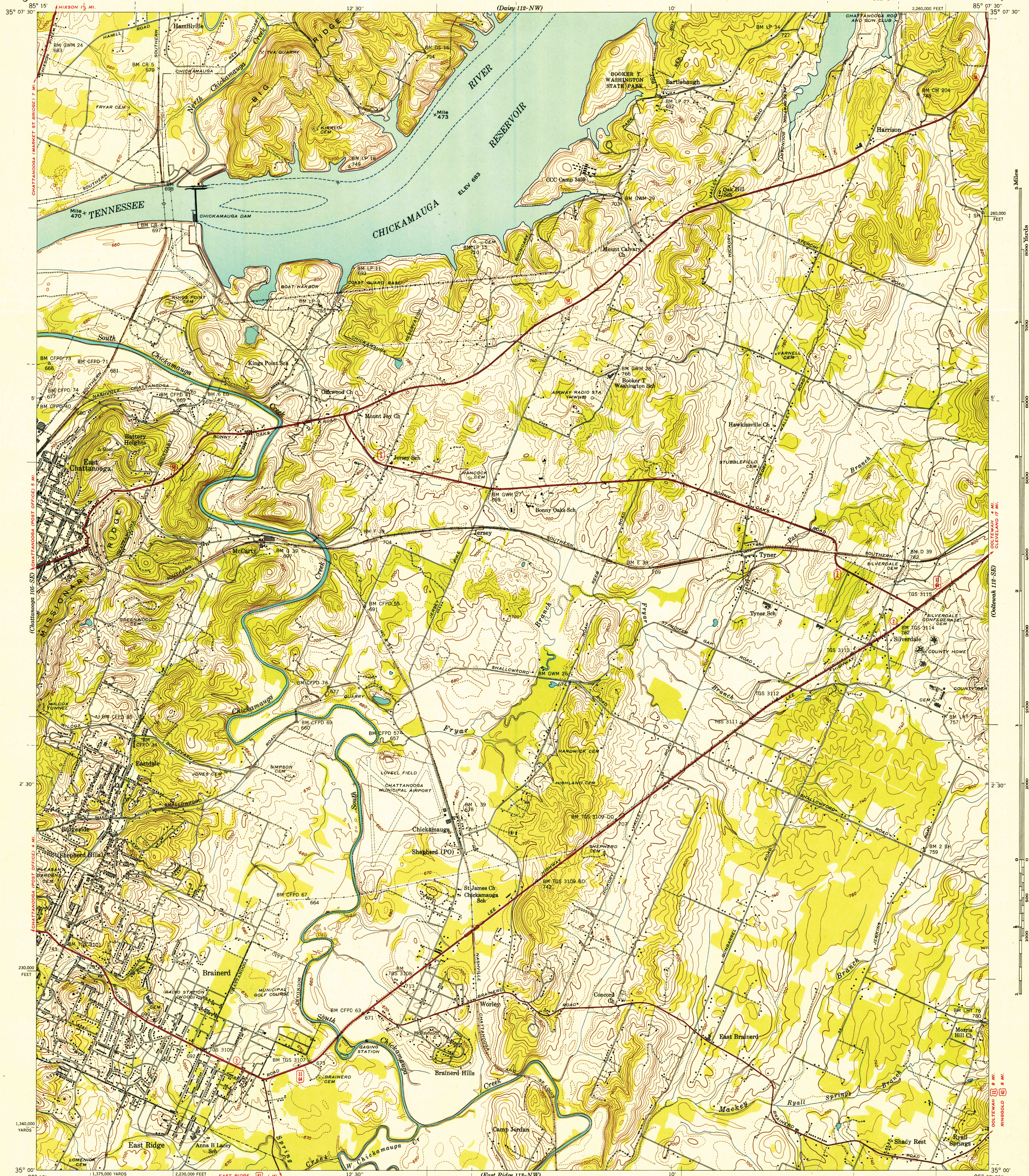


TENNESSEE
(HAMILTON COUNTY)
EAST CHATTANOOGA QUADRANGLE
112-SW

U. S. G. S.
FILE COPY
Inspection and Editing

UNITED STATES
TENNESSEE VALLEY AUTHORITY
MAPS AND SURVEYS DIVISION

TENNESSEE
(HAMILTON COUNTY)
EAST CHATTANOOGA QUADRANGLE
112-SW



Basic control by USC & GS, USGS, and TVA
Topography by Geological Survey from aerial photographs
by stereophotogrammetric methods and planetable
Field examination by Tennessee Valley Authority—1941

Maps distributed by the Geological Survey

APPROXIMATE MEAN
DECLINATION 1942

Scale: 24000

1 0 1 2 Miles
5000 10000 Feet

1 0 1 2 Kilometers

Contour interval 20 feet with 10 foot contours shown by broken line
Datum is mean sea level

les
USGS
HISTORICAL FILE
TOPOGRAPHIC DIVISION

Polyconic projection. 1927 North American datum
10,000 foot grid based on Tennessee
rectangular coordinate system
5000 yard grid based on U. S. zone system, C

ROUTES USUALLY TRAVELED

HARD IMPERVIOUS SURFACES _____
OTHER SURFACE IMPROVEMENTS _____

(11) U S ROUTE **(58) STATE ROUTE**

EAST CHATTANOOGA, TENN.
112-SW
Edition of 1942
N3500-W8507.5/7.5

JUN 13 1942