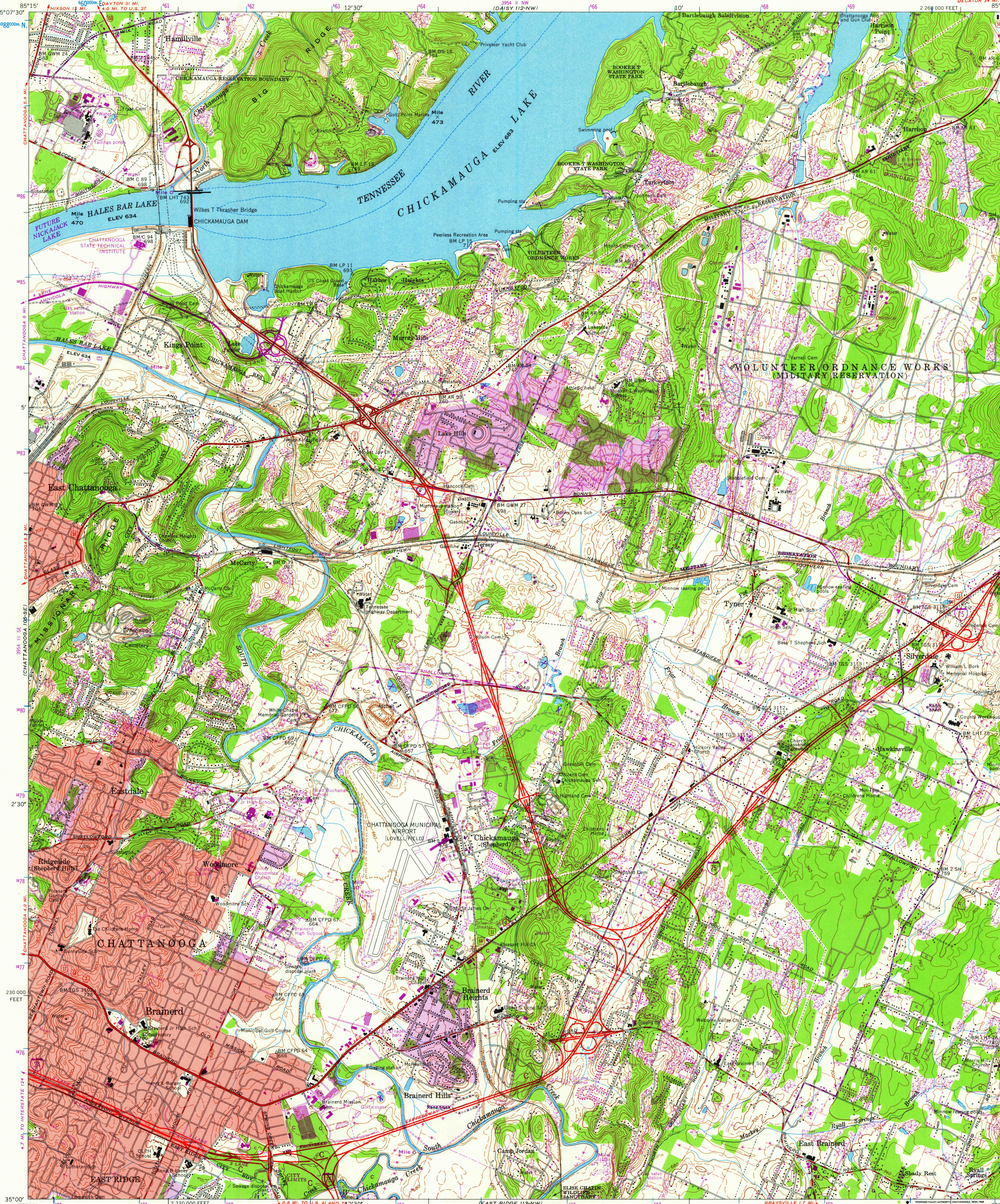


UNITED STATES  
DEPARTMENT OF THE INTERIOR  
GEOLOGICAL SURVEY

UNITED STATES  
TENNESSEE VALLEY AUTHORITY  
MAPS AND SURVEYS BRANCH

EAST CHATTANOOGA QUADRANGLE  
TENNESSEE-HAMILTON CO.  
7.5 MINUTE SERIES (TOPOGRAPHIC) 112-SW



Mapped and edited by Tennessee Valley Authority  
Published by the Geological Survey  
Control by US&GS, USGS, USED, and TVA  
Revised by TVA in 1958 by photogrammetric methods using  
aerial photographs taken 1957 and by reference to TVA-USGS  
quadrangle dated 1941. Map field checked by TVA, 1958.  
Polyconic projection. 1927 North American datum  
10,000-foot grid based on Tennessee rectangular  
coordinate system  
1000 meter Universal Transverse Mercator Grid ticks,  
Zone 16, shown in blue and labeled in purple  
Red tint indicates areas in which only  
landmark buildings are shown  
Fine red dashed lines indicate selected fence and field lines  
visible on aerial photographs. This information is unchecked

APPROXIMATE MEAN  
DECLINATION 1958  
1968

LEGEND  
Stream  
Pond and dam  
Mine or quarry  
Woodland (formerly clearing)  
Clearing (formerly woodland)  
Orchard  
General deletion

SCALE 1:24,000  
CONTOUR INTERVAL 20 FEET  
DASHED LINES REPRESENT HALF-INTERVAL CONTOURS  
DATUM IS MEAN SEA LEVEL

THIS MAP COMPLIES WITH NATIONAL MAP ACCURACY STANDARDS  
FOR SALE BY U. S. GEOLOGICAL SURVEY, WASHINGTON 25, D. C.  
TENNESSEE DIVISION OF GEOLOGY, NASHVILLE, TENN. 37219  
U. S. TENNESSEE VALLEY AUTHORITY, CHATTANOOGA OR KNOXVILLE, TENN. 37401 OR 37902  
A FOLDER DESCRIBING TOPOGRAPHIC MAPS AND SYMBOLS IS AVAILABLE ON REQUEST

Grid declination 1°03'.19 MILS East  
Revisions in purple compiled by TVA, April 1967 from  
November 1966 and January 1967 photography  
without field examination

Revisions overprinted by TVA, February 1968 (TVA 112-SW)

ROAD CLASSIFICATION  
Heavy-duty  
Medium-duty  
Light-duty  
U. S. Route  
State Route  
In developed areas, only through roads are classified

Interstate Route  
Larger scale  
topographic maps  
available from TVA

QUADRANGLE LOCATION  
MISS. ALA. GA. S.C.

EAST CHATTANOOGA, TENN.  
N3500-W8507.5/7.5  
1958

Int. R  
APR 26 1968  
1500  
112-SW  
AMS 3954 II SW-SERIES V841