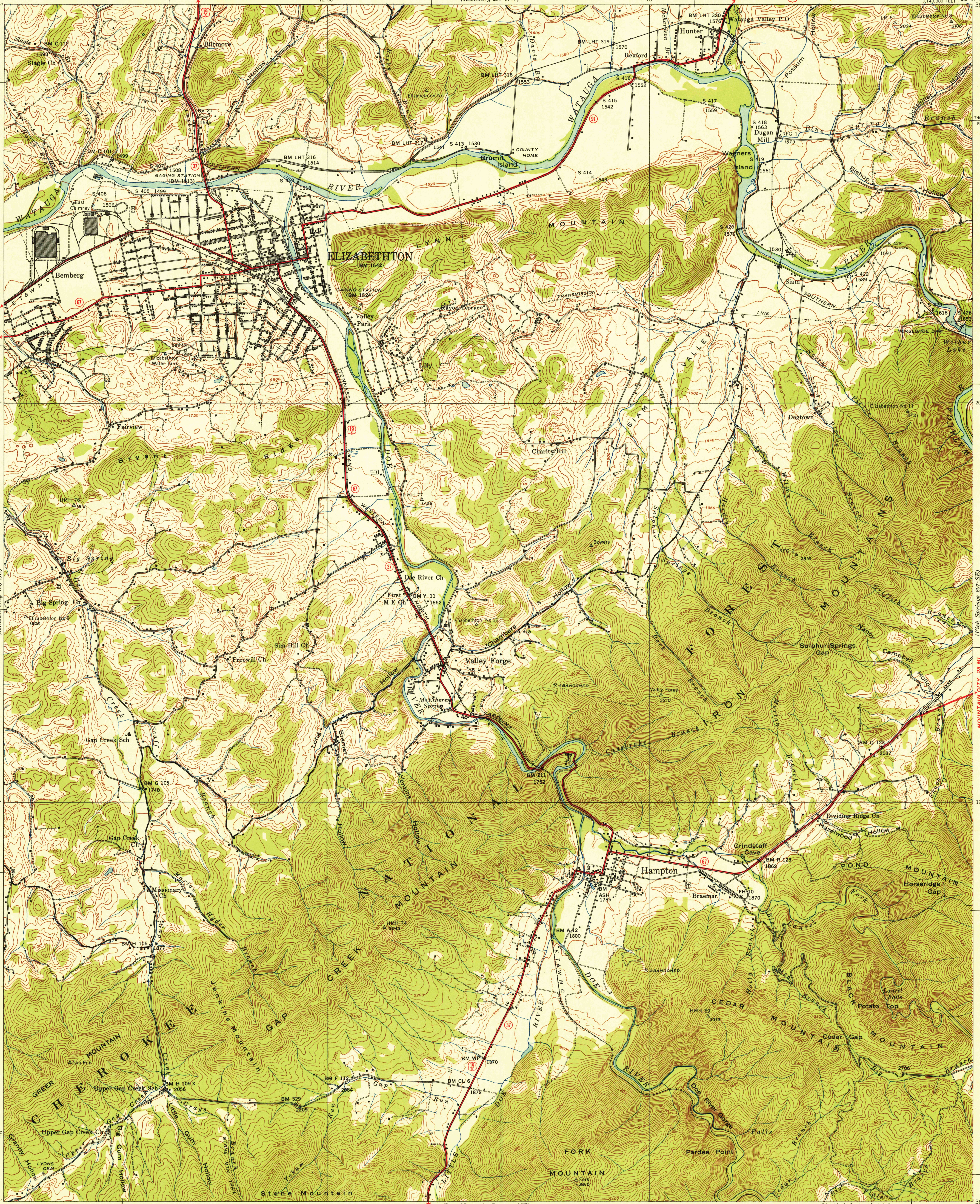


U.S.G.S.
FILE COPY
Inspection and Editing.

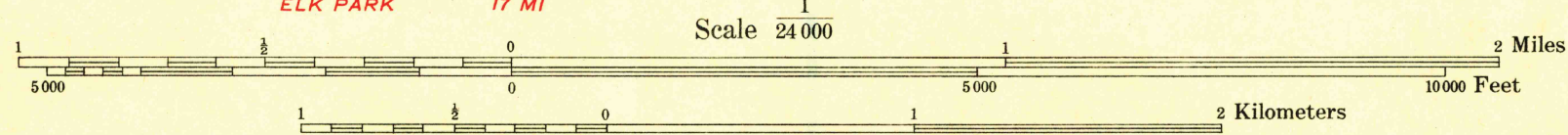
UNITED STATES
TENNESSEE VALLEY AUTHORITY
MAPS AND SURVEYS DIVISION

TENNESSEE
(CARTER COUNTY)
ELIZABETHTON QUADRANGLE
207-SW
3,140,000 FEET



Control by USC&GS, USGS, and TVA.
Topography by Fairchild Aerial Surveys, Inc.,
by stereophotogrammetric process - 1937.
Field examination by Tennessee Valley Authority - 1938.
Office inspection and review by the Geological Survey.

MAGNETIC NORTH
TRUE NORTH
APPROXIMATE MEAN
DECLINATION, 1938



Contour interval 40 feet with 20 foot contours shown by broken line
Datum is mean sea level

FOR SALE BY U. S. GEOLOGICAL SURVEY, WASHINGTON 25, D. C.
AND BY U. S. TENNESSEE VALLEY AUTHORITY, CHATTANOOGA OR KNOXVILLE, TENN.
A FOLDER DESCRIBING TOPOGRAPHIC MAPS AND SYMBOLS IS AVAILABLE ON REQUEST

USGS
HISTORICAL FILE
TOPOGRAPHIC DIVISION

Polycyclic projection, 1927 North American datum
10,000 foot grid based on Tennessee
rectangular coordinate system
HARD IMPERVIOUSLY SURFACED ROADS
OTHER MAIN TRAVELED ROADS
U.S. HIGHWAY NUMBER STATE HIGHWAY NUMBER

U.S.G.S.
FILE COPY
Inspection and Editing.

ELIZABETHTON, TENN.
207-SW
Edition of 1938
reprinted 1951
N 3615-W 8207.5/7.5

1111 2 2 1951 3124