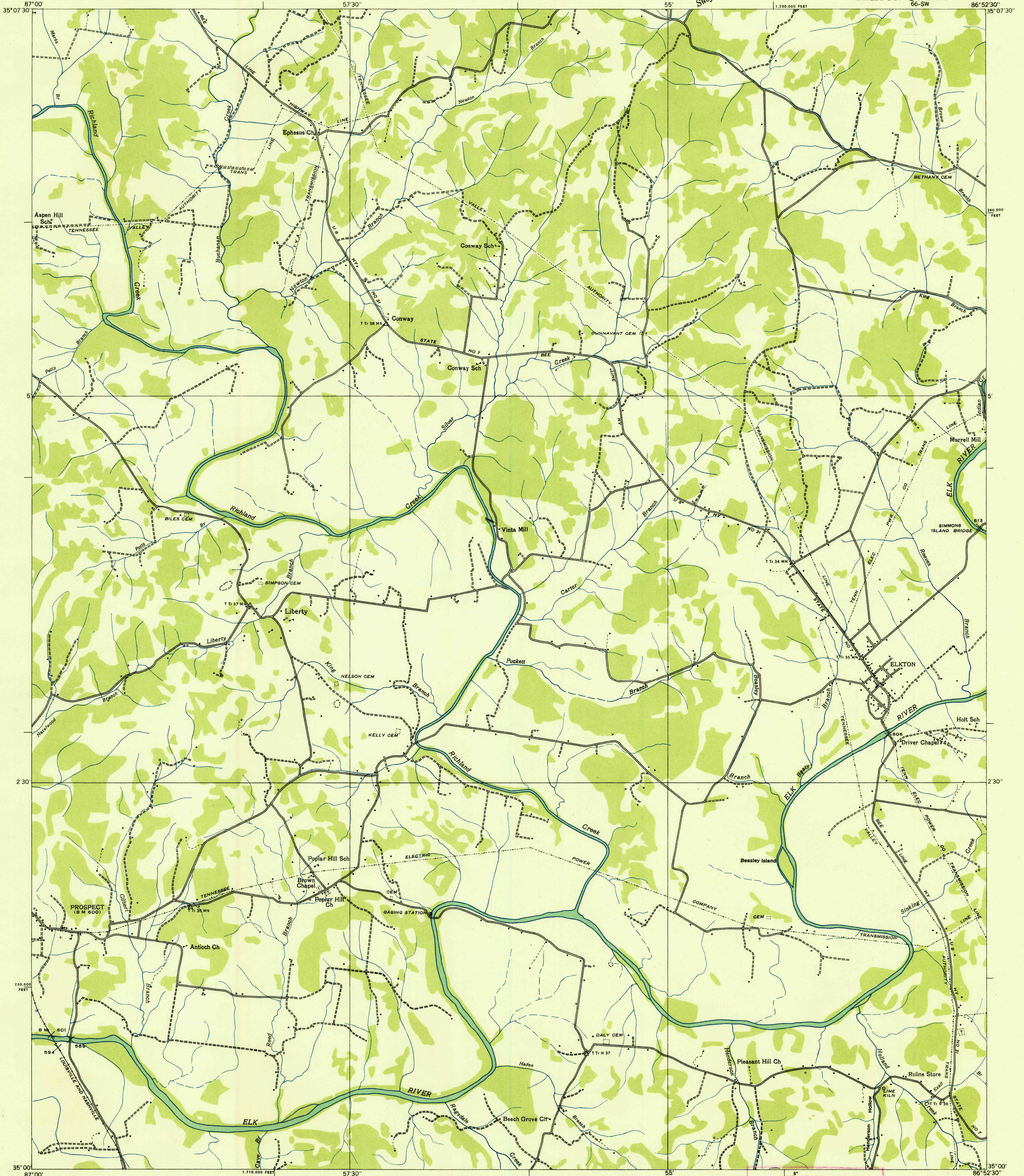
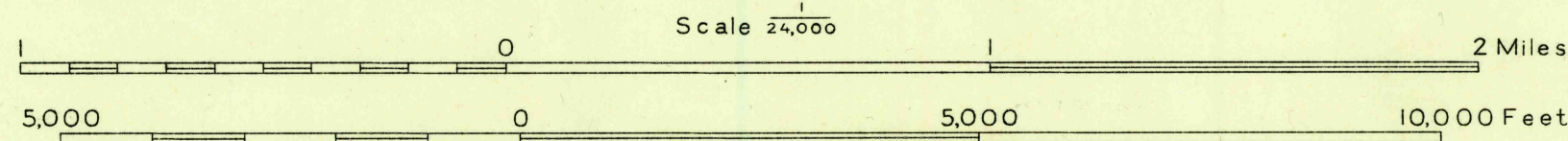


Advance sheet
Subject to correction



Albert Pike, Division Engineer
Compiled by U. S. Geological Survey from aerial photographs
Control by U. S. Geological Survey, U. S. Coast and Geodetic Survey and
Corps of Engineers, U. S. Army
Field examination in 1936



U. S. Board on
Geographical Names

U. S. GEOLOGICAL SURVEY
POLYCONIC PROJECTION, 1927 NORTH AMERICAN DATUM
10,000 FOOT GRID BASED ON TENNESSEE
RECTANGULAR COORDINATE SYSTEM
Trail
Sinks
Probable Drainage
USGS
HISTORICAL FILE
TOPOGRAPHIC DIVISION
ELKTON, TENN.
66-SW