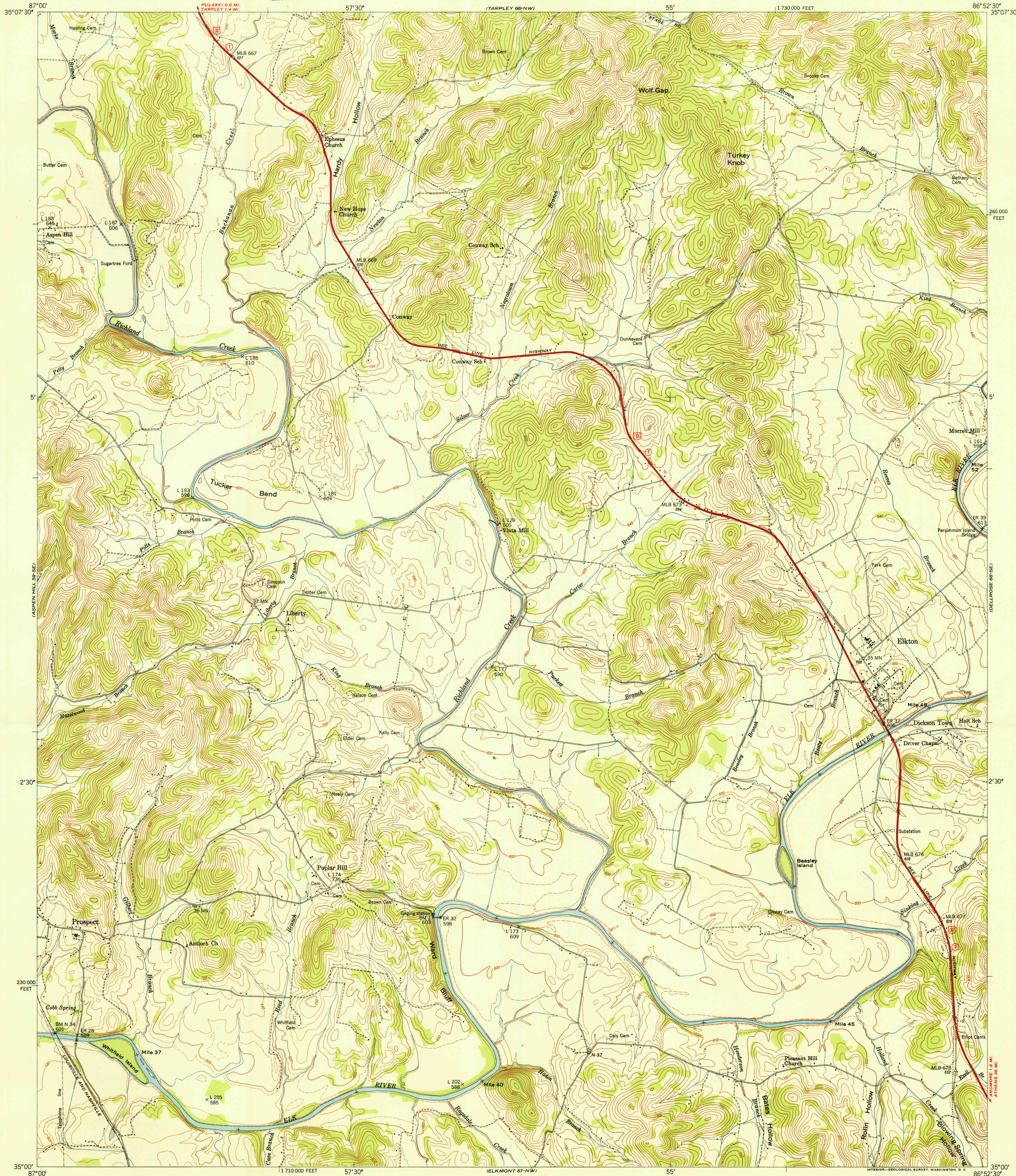


UNITED STATES
DEPARTMENT OF THE INTERIOR
GEOLOGICAL SURVEY

U. S. G. S.
FILE COPY
Inspection and Editing

UNITED STATES
TENNESSEE VALLEY AUTHORITY
MAPS AND SURVEYS BRANCH

ELKTON QUADRANGLE
TENNESSEE-GILES CO.
7.5 MINUTE SERIES (TOPOGRAPHIC) 66-SW



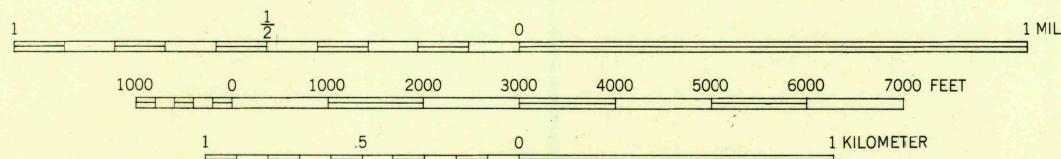
Mapped and edited by Tennessee Valley Authority
Published by the Geological Survey

Control by USC&GS, USGS, USED, and TVA

Topography by USGS and TVA by multiplex methods from aerial
photographs taken 1944. Field examination by TVA, 1948

Polyconic projection. 1927 North American datum
10,000-foot grid based on Tennessee rectangular
coordinate system

TRUE NORTH
MAGNETIC NORTH
APPROXIMATE MEAN
DECLINATION 1948



CONTOUR INTERVAL 20 FEET
DASHED LINES REPRESENT HALF-INTERVAL CONTOURS
DATUM IS MEAN SEA LEVEL

THIS MAP COMPLIES WITH NATIONAL MAP ACCURACY STANDARDS
FOR SALE BY U. S. GEOLOGICAL SURVEY, WASHINGTON 25, D. C.
AND BY U. S. TENNESSEE VALLEY AUTHORITY, CHATTANOOGA OR KNOXVILLE, TENN.
A FOLDER DESCRIBING TOPOGRAPHIC MAPS AND SYMBOLS IS AVAILABLE ON REQUEST

USGS
HISTORICAL FILE
TOPOGRAPHIC DIVISION

ROUTES USUALLY TRAVELED
HARD, IMPERVIOUS SURFACES
OTHER SURFACE IMPROVEMENTS
① U. S. ROUTE ② STATE ROUTE

ELKTON, TENN.
N3500-W8652.5/7.5
PRINTED 1951

U. S. G. S.
FILE COPY
Inspection and Editing