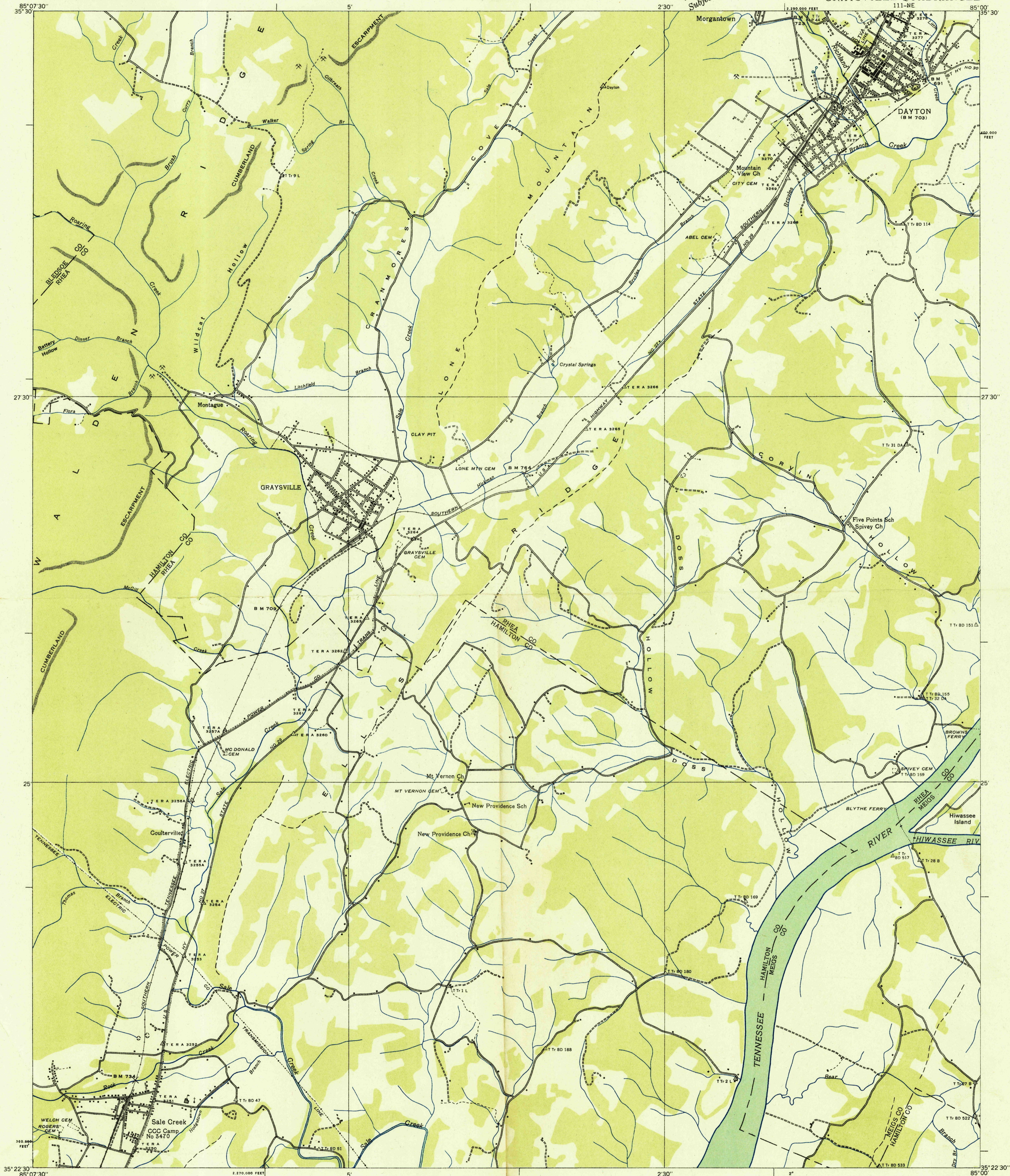


DEPARTMENT OF THE INTERIOR
U. S. GEOLOGICAL SURVEY

TENNESSEE VALLEY AUTHORITY
ARTHUR E. MORGAN, CHAIRMAN AND CHIEF ENGINEER
CARL A. BOCK, ASSISTANT CHIEF ENGINEER

Advance sheet
Subject to correction

TENNESSEE
GRAYSVILLE QUADRANGLE
111-NE



Albert Pike, Division Engineer
Compiled by U. S. Geological Survey from aerial photographs
Control by U. S. Geological Survey, U. S. Coast and Geodetic Survey,
Tenn. Valley Authority and Tenn. Em. Rel. Adm.
Field examination in 1935

Scale 25,000
2 Miles
5,000 0 5,000 10,000 Feet

Datum is mean sea level

TRUE NORTH
MAGNETIC NORTH
APPROXIMATE MEAN
DECLINATION, 1935

USGS
HISTORICAL
TOPOGRAPHIC DIVISION

Polyconic projection, 1927 North American datum
10,000 foot grid based on Tennessee
Angular coordinate system

Ridge line
Trail
Sinks
Rim Rock

GRAYSVILLE, TENN.
111-NE