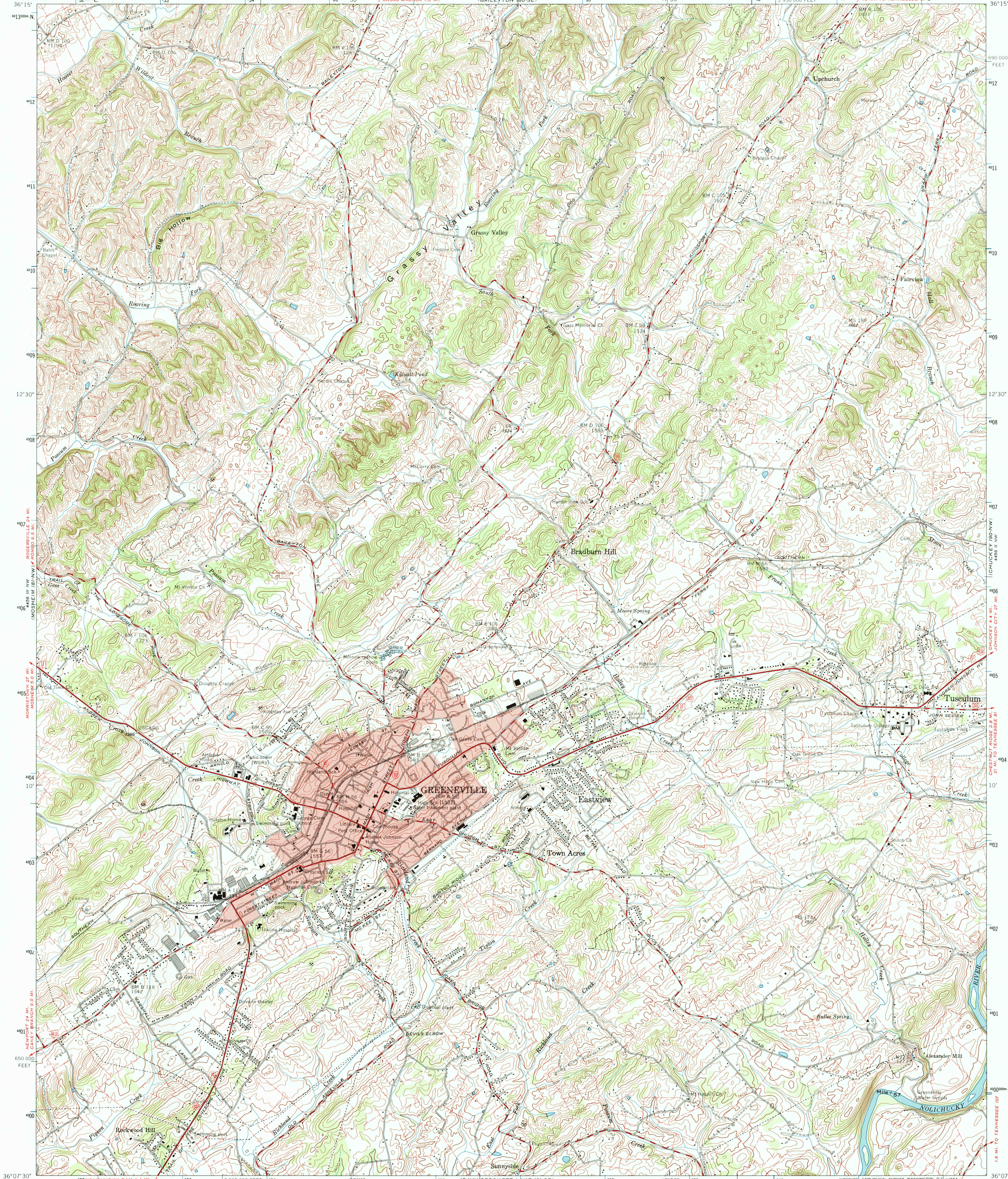


UNITED STATES
DEPARTMENT OF THE INTERIOR
GEOLOGICAL SURVEY

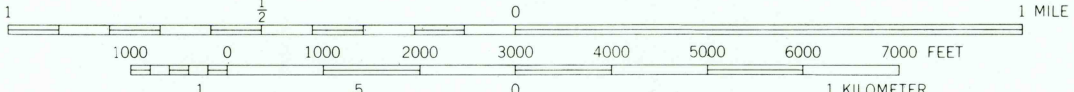
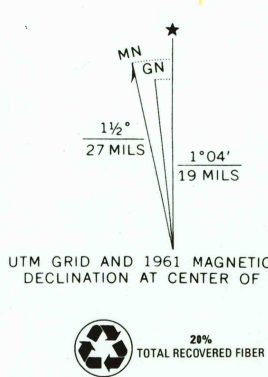
UNITED STATES
TENNESSEE VALLEY AUTHORITY
MAPS AND SURVEYS BRANCH

GREENEVILLE QUADRANGLE
TENNESSEE-GREENE CO.
7.5 MINUTE SERIES (TOPOGRAPHIC) 181-NE



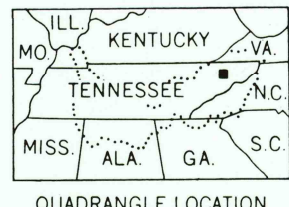
Maped and edited by Tennessee Valley Authority
Published by the Geological Survey

Control by USC&GS, USGS, and TVA
Revised by TVA in 1961 by photogrammetric methods using
aerial photographs taken 1959 and by reference to TVA-USGS
quadrangle dated 1939. Map field checked by TVA, 1961
Polyconic projection, 1927 North American datum
10,000-foot grid based on Tennessee rectangular
coordinate system
1000 meter Universal Transverse Mercator Grid ticks,
Zone 17, shown in blue
Fine red dashed lines indicate selected fence and field lines
visible on aerial photographs. This information is unchecked
Red tint indicates areas in which only landmark buildings are shown



CONTOUR INTERVAL 20 FEET
DATUM IS MEAN SEA LEVEL

THIS MAP COMPLIES WITH NATIONAL MAP ACCURACY STANDARDS
FOR SALE BY U.S. GEOLOGICAL SURVEY, DENVER, COLORADO 80225, OR RESTON, VIRGINIA 22092
TENNESSEE DEPARTMENT OF CONSERVATION, DIVISION OF GEOLOGY, NASHVILLE, TENN. 37219
AND U.S. TENNESSEE VALLEY AUTHORITY, CHATTANOOGA, TENN. 37401
A FOLDER DESCRIBING TOPOGRAPHIC MAPS AND SYMBOLS IS AVAILABLE ON REQUEST



ROAD CLASSIFICATION
Heavy-duty Poor motor road
Medium-duty Wagon and jeep track
Light-duty Foot trail
U. S. Route State Route
In developed areas, only through roads are classified

GREENEVILLE, TENN.
N3607.5-W8245/7.5
1961
AMS 4456 III NE SERIES V841

RECEIVED
DEC 3 1 1939
USGS/MSD
HISTORICAL MAP ARCHIVES
722671 409084 6
4 722671-409084-6
9 722671-409084-6