

TURNERS STATION

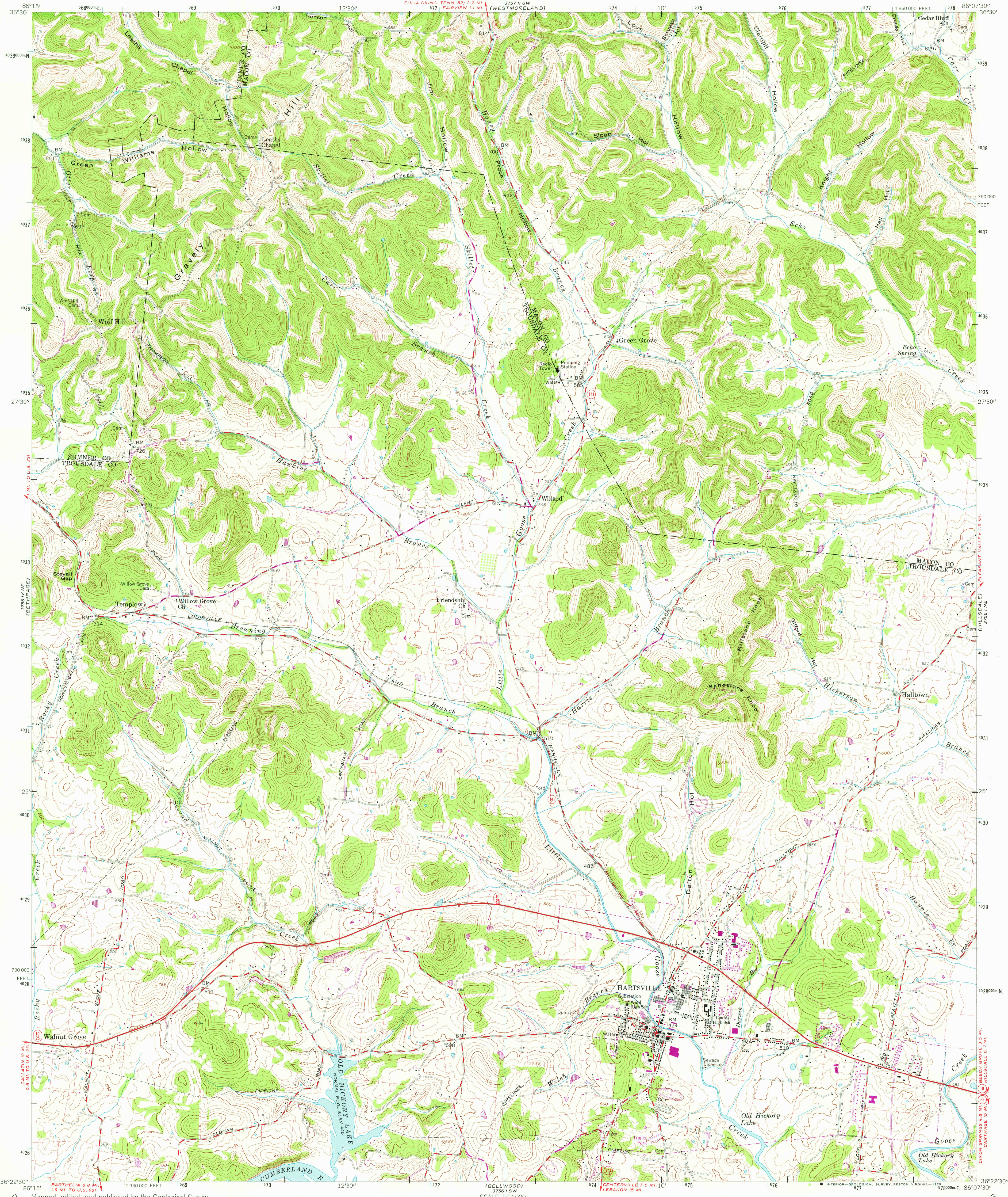
UNITED STATES  
DEPARTMENT OF THE INTERIOR  
GEOLOGICAL SURVEY



STATE OF TENNESSEE  
DEPARTMENT OF CONSERVATION  
DIVISION OF GEOLOGY

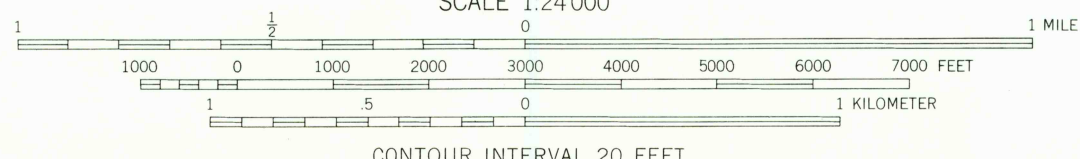
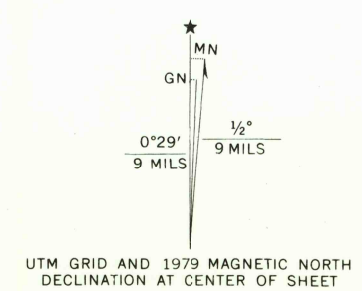
HARTSVILLE QUADRANGLE  
TENNESSEE  
7.5 MINUTE SERIES (TOPOGRAPHIC)

LAUREL



HUNTERS POINT

Maped, edited, and published by the Geological Survey  
Control by USGS, USC&GS, and USCE  
Topography from aerial photographs by photogrammetric methods  
Aerial photographs taken 1951. Field check 1958  
Polyconic projection, 1927 North American datum  
10,000-foot grid based on Tennessee coordinate system  
1000-meter Universal Transverse Mercator grid ticks,  
zone 16, shown in blue  
Fine red dashed lines indicate selected fence and field lines  
visible on aerial photographs. This information is unchecked  
Unchecked elevations are shown in brown  
Revisions shown in purple compiled from aerial photographs  
taken 1975 and other source data. This information not  
field checked. Map edited 1979



CONTOUR INTERVAL 20 FEET  
NATIONAL GEODETIC VERTICAL DATUM OF 1929  
THIS MAP COMPLIES WITH NATIONAL MAP ACCURACY STANDARDS  
FOR SALE BY U. S. GEOLOGICAL SURVEY, RESTON, VIRGINIA 22092  
AND TENNESSEE DIVISION OF GEOLOGY, NASHVILLE, TENN. 37219  
A FOLDER DESCRIBING TOPOGRAPHIC MAPS AND SYMBOLS IS AVAILABLE ON REQUEST

Boundary lines shown in purple compiled from latest  
information available from the controlling authority

ROAD CLASSIFICATION  
Heavy-duty ——— Light-duty ———  
Medium-duty ——— Unimproved dirt ———  
State Route ———  
USGS  
Historical File  
Topographic Division  
HARTSVILLE, TENN.  
N 3622.5 — W 8607.5 / 7.5  
1958  
PHOTOREVISED 1979  
AMS 3756 1 NW-SERIES V841

MAY 14 1979

350