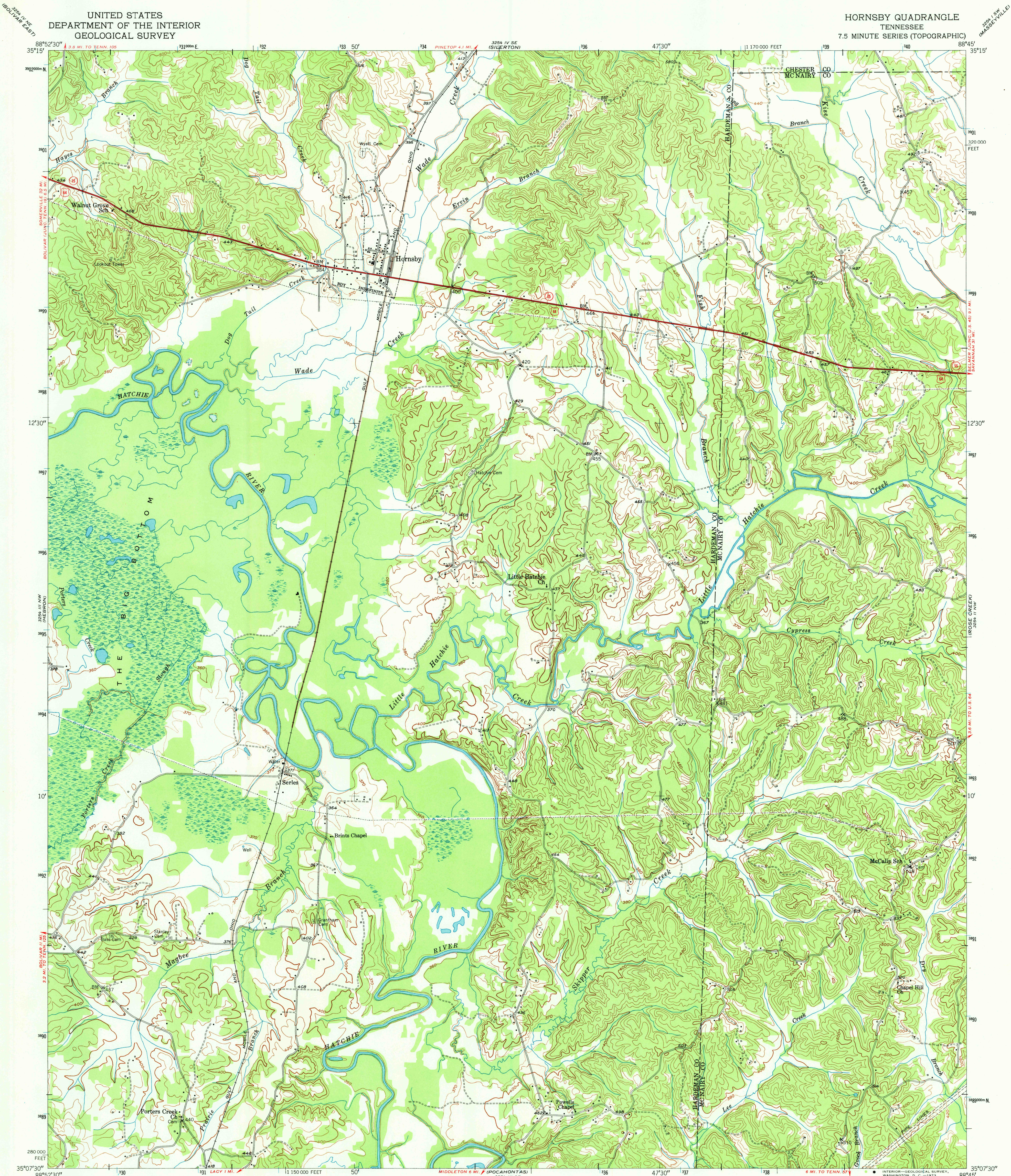
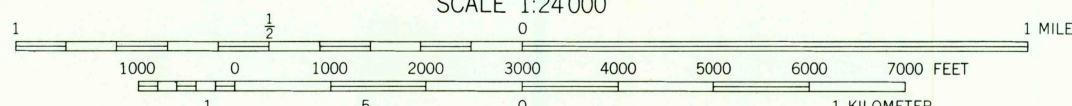
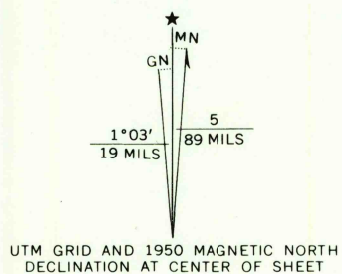


UNITED STATES
DEPARTMENT OF THE INTERIOR
GEOLOGICAL SURVEY

HORNSBY QUADRANGLE
TENNESSEE
7.5 MINUTE SERIES (TOPOGRAPHIC)



Mapped, edited, and published by the Geological Survey
Control by USGS and USC&GS
Topography from aerial photographs by stereopair
Aerial photographs taken 1947. Field check 1950
Polyconic projection. 1927 North American datum
10,000-foot grid based on Tennessee coordinate system
1000-meter Universal Transverse Mercator grid ticks,
zone 16, shown in blue



CONTOUR INTERVAL 20 FEET
DOTTED LINES REPRESENT HALF-INTERVAL CONTOURS
DATUM IS MEAN SEA LEVEL

THIS MAP COMPLIES WITH NATIONAL MAP ACCURACY STANDARDS
FOR SALE BY U. S. GEOLOGICAL SURVEY, WASHINGTON, D. C. 20242
AND TENNESSEE DIVISION OF GEOLOGY, NASHVILLE, TENNESSEE 37219
A FOLDER DESCRIBING TOPOGRAPHIC MAPS AND SYMBOLS IS AVAILABLE ON REQUEST

ROAD CLASSIFICATION
Heavy-duty 4 LANE 16 LANE Light-duty
Medium-duty 4 LANE 16 LANE Unimproved dirt
U. S. Route State Route

JUL 12 1973
HORNSBY, TENN.
N3507.5-W8845/7.5

1950
AMS 3254 III NE-SERIES V841

1340