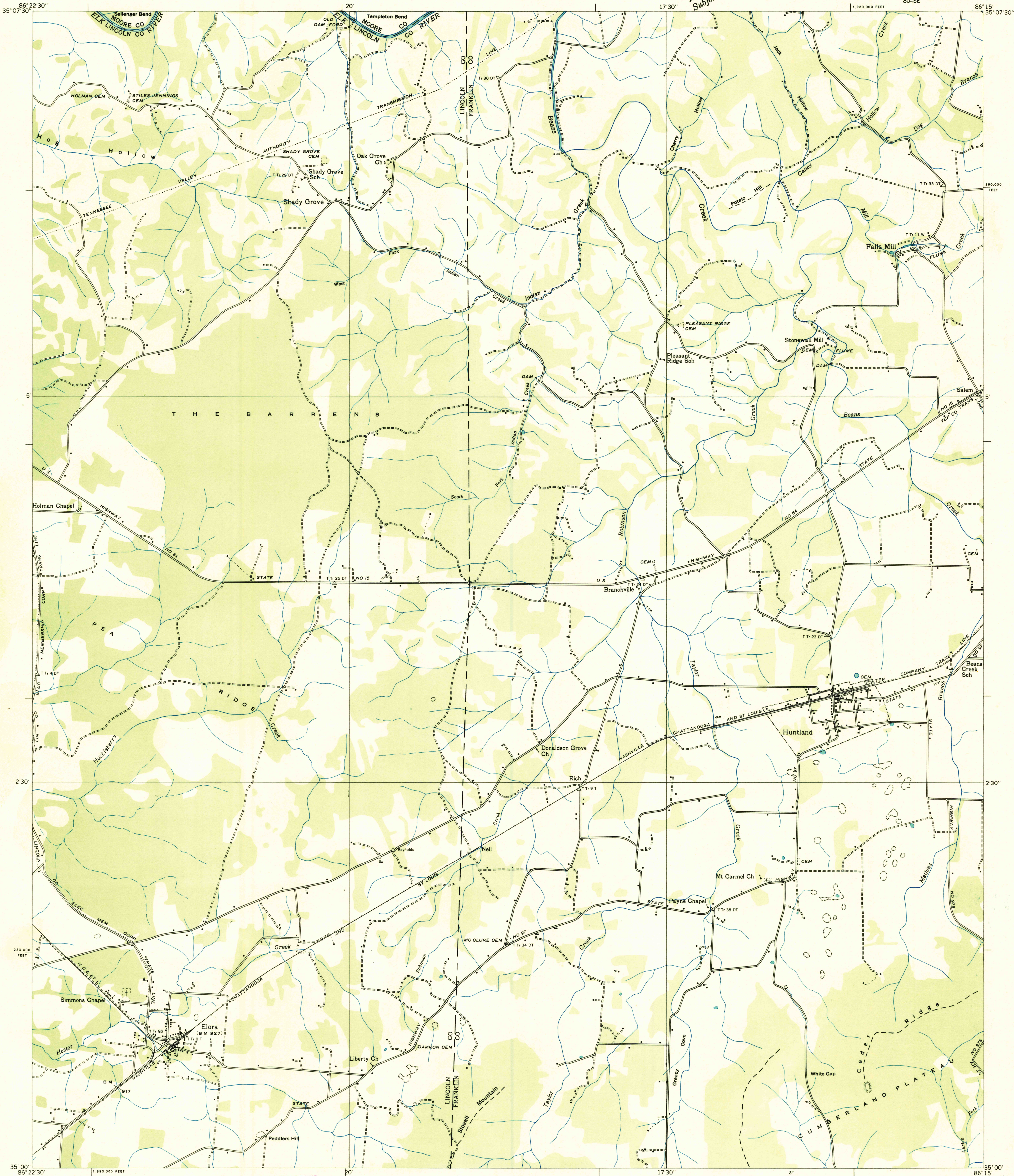


Advance sheet
Subject to correction



Albert Pike, Division Engineer
Compiled by U. S. Geological Survey from aerial photographs
Control by U. S. Geological Survey and U. S. Coast and Geodetic Survey
Field examination in 1936

U. S. BOARD ON
GEOGRAPHICAL NAMES
USGS
HISTORICAL FILE
TOPOGRAPHIC DIVISION
Date 1943

Scale 1:24,000
0 5,000 10,000 Feet
Datum is mean sea level

Polyconic projection. 1927 North American datum
10,000 foot grid based on Tennessee
rectangular coordinate system
Ridge line
Trail
Sinks
Probable drainage
TRUE NORTH
MAGNETIC NORTH
APPROXIMATE MEAN
DECLINATION, 1956

USGS
HISTORICAL FILE
TOPOGRAPHIC DIVISION

HUNTLAND TENN.
80-SE