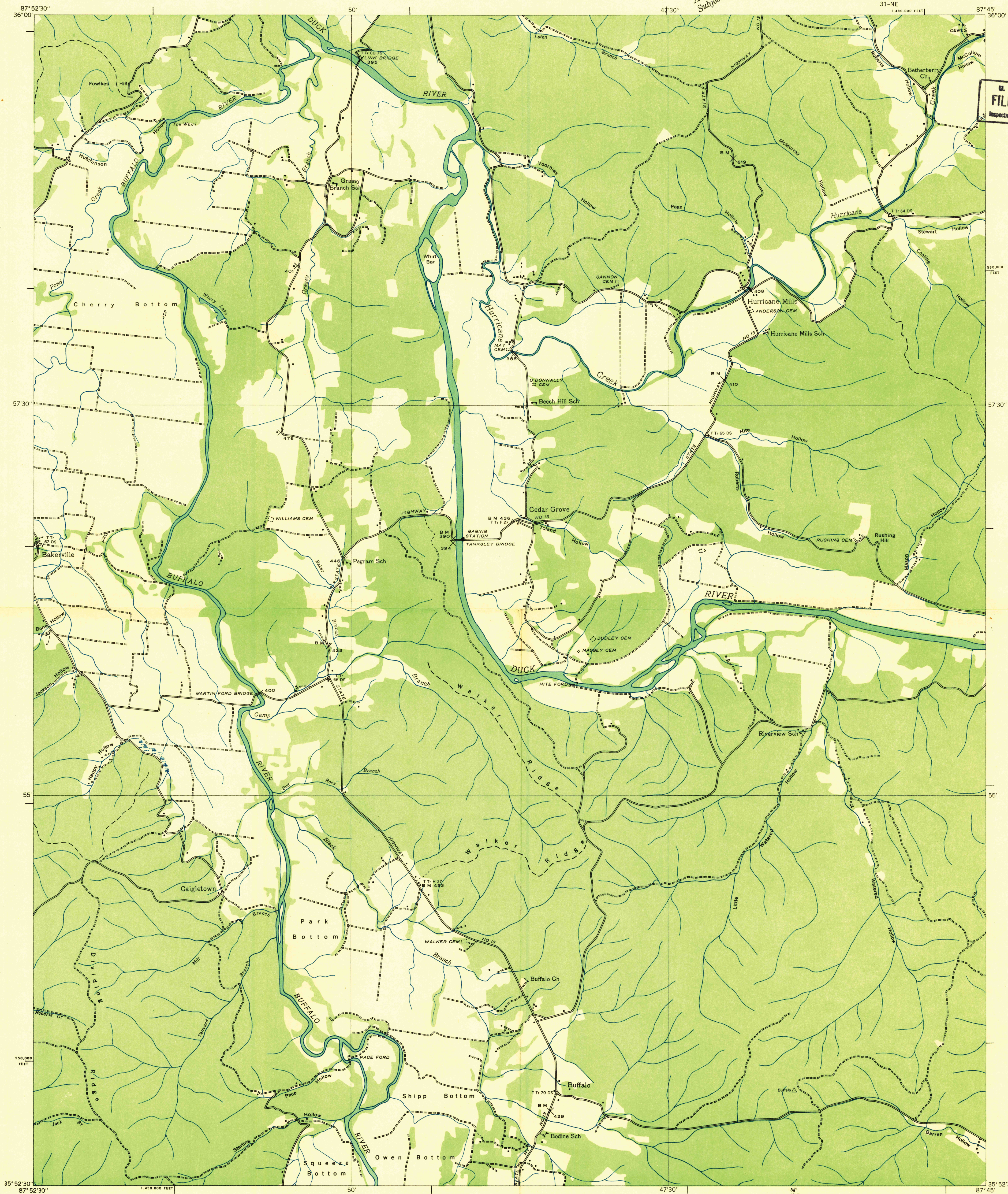
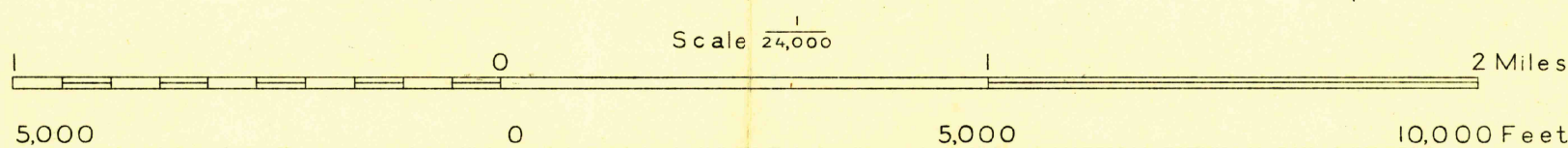


Advance sheet
Subject to correction



U. S. G. S.
FILE COPY
Inspection and Editing.

Albert Pike, Division Engineer
Compiled by U. S. Geological Survey from aerial photographs
Control by U. S. Geological Survey, U. S. Coast and Geodetic Survey,
Corps of Engineers, U. S. Army and Tennessee Valley Authority
Field examination in 1936



Datum is mean sea level

USGS
HISTORICAL FILE
TOPOGRAPHIC DIVISION

APPROXIMATE MEAN
DECLINATION, 1936

Polycyclic projection. 1927 North American datum
10,000 foot grid based on Tennessee
rectangular coordinate system

Ridge line
Trail
Sink
Probable drainage

HURRICANE MILLS, TENN.
31-NE

U. S. G. S.
FILE COPY
Inspection and Editing.