

WOODVILLE

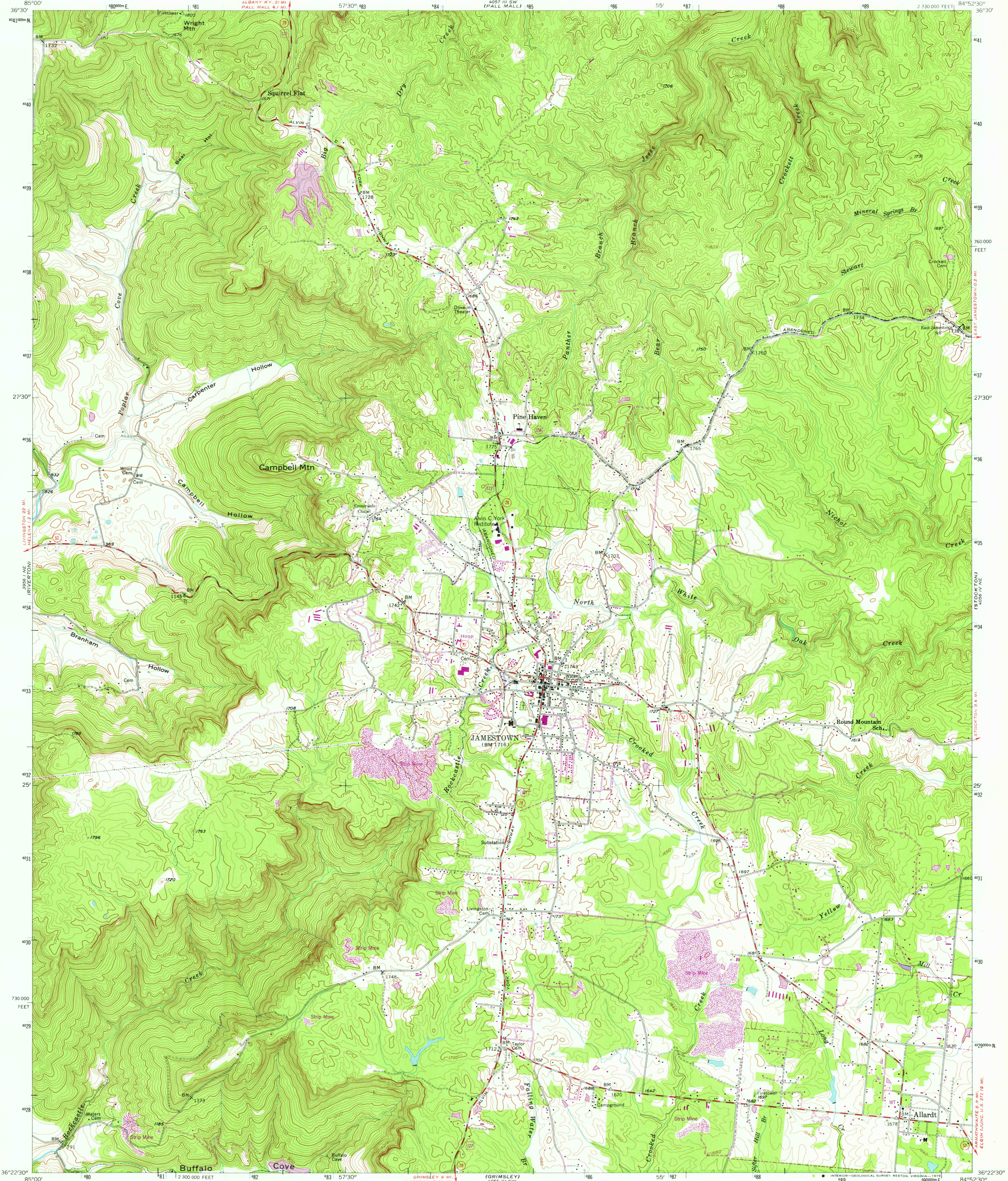
UNITED STATES  
DEPARTMENT OF THE INTERIOR  
GEOLOGICAL SURVEY



STATE OF TENNESSEE  
DEPARTMENT OF CONSERVATION  
DIVISION OF GEOLOGY

JAMESTOWN QUADRANGLE  
TENNESSEE—FENTRESS CO.  
7.5 MINUTE SERIES (TOPOGRAPHIC)

WOODVILLE



Mapped, edited, and published by the Geological Survey  
Control by USGS, USC&GS, and USCE

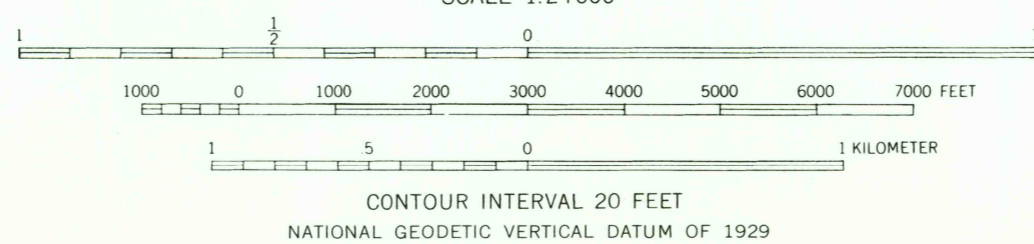
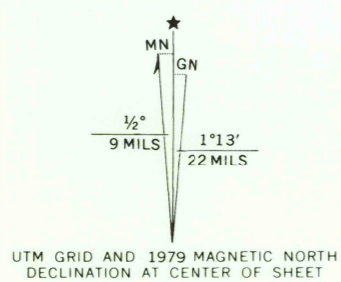
Topography from aerial photographs by multiplex methods  
Aerial photographs taken 1951. Field check 1954

Polyconic projection. 1927 North American datum  
10,000-foot grid based on Tennessee coordinate system  
Unchecked elevations are shown in brown

1000-meter Universal Transverse Mercator grid ticks,  
zone 16, shown in blue

Revisions shown in purple compiled from aerial photographs  
taken 1976 and other source data. This information not  
field checked. Map edited 1979

Boundary lines shown in purple compiled from latest  
information available from the controlling authority



THIS MAP COMPLIES WITH NATIONAL MAP ACCURACY STANDARDS  
FOR SALE BY U.S. GEOLOGICAL SURVEY, RESTON, VIRGINIA 22092  
AND TENNESSEE DIVISION OF GEOLOGY, NASHVILLE, TENNESSEE 37219  
A FOLDER DESCRIBING TOPOGRAPHIC MAPS AND SYMBOLS IS AVAILABLE ON REQUEST



USGS  
Historical File  
Topographic Division

JAMESTOWN, TENN.  
N 3622.5 - W 8452.5/7.5

1954  
PHOTOREVISED 1979  
AMS 4056 IV NW—SERIES V841

MAY 14 1979.

1850