

(WOODVILLE)
36°51' SE
4041000 N

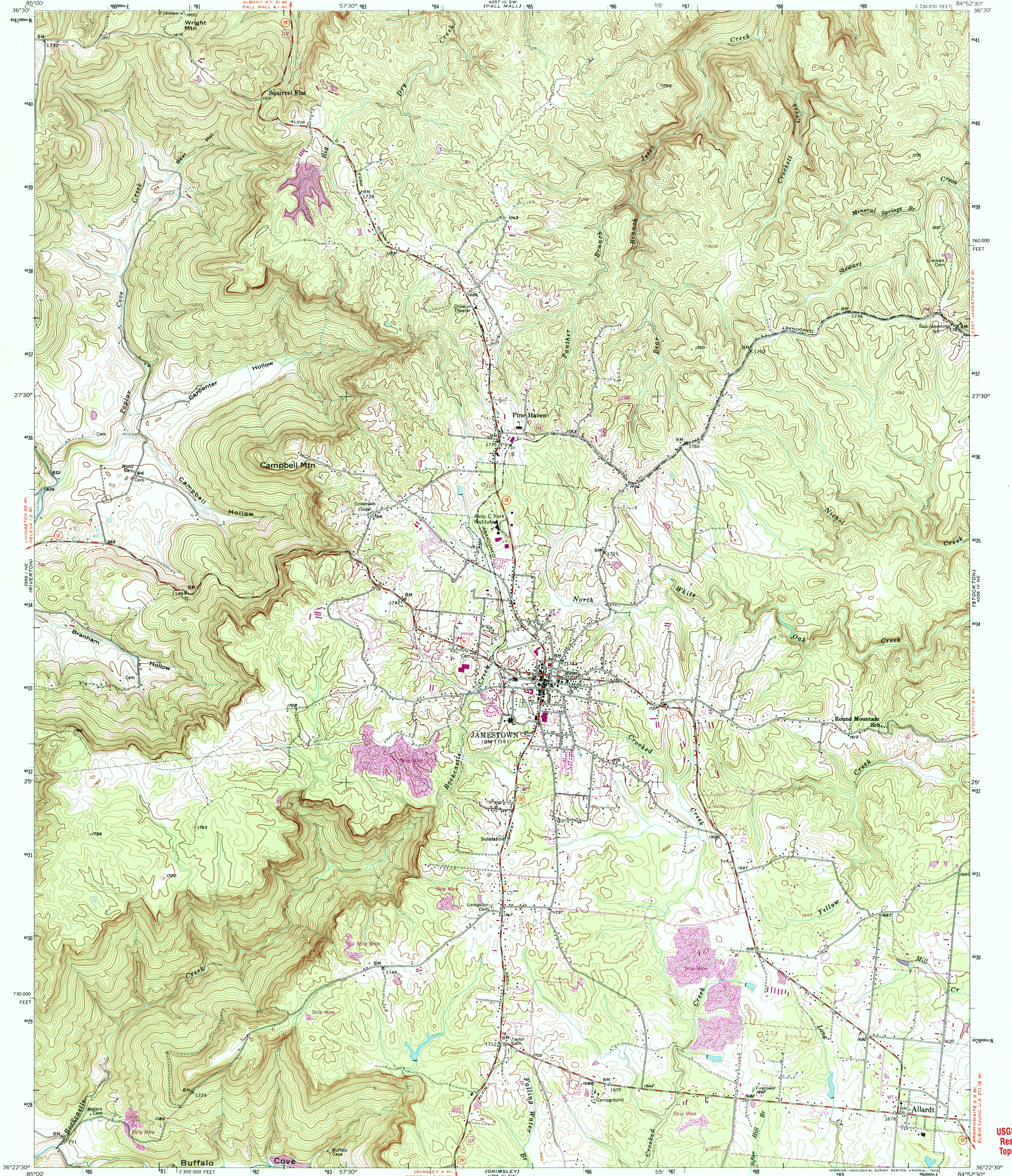


U.S. DEPARTMENT OF THE INTERIOR
U.S. GEOLOGICAL SURVEY

STATE OF TENNESSEE
DEPARTMENT OF CONSERVATION
DIVISION OF GEOLOGY

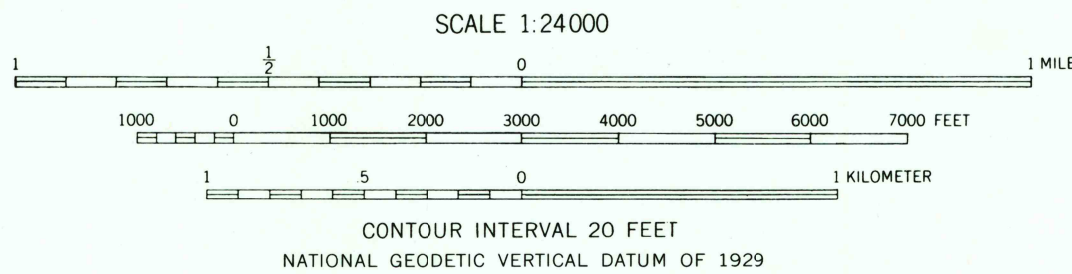
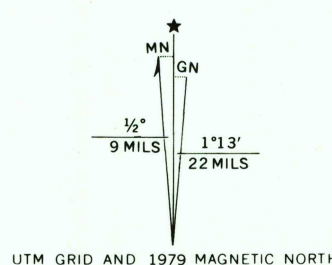
JAMESTOWN QUADRANGLE
TENNESSEE—FENTRESS CO.
7.5 MINUTE SERIES (TOPOGRAPHIC)

(SHARP PLATE)
4041000 N
36°52' SE



(WOODVILLE)
36°51' SE
4041000 N

Mapped, edited, and published by the Geological Survey
Control by USGS, USC&GS, and USCE
Topography from aerial photographs by multiplex methods
Aerial photographs taken 1951. Field check 1954
Polyconic projection. 1927 North American datum
10,000-foot grid based on Tennessee coordinate system
Unchecked elevations are shown in brown
1000-meter Universal Transverse Mercator grid ticks,
zone 16, shown in blue
Revisions shown in purple compiled from aerial photographs
taken 1976 and other source data. This information not
field checked. Map edited 1979
Boundary lines shown in purple compiled from latest
information available from the controlling authority



THIS MAP COMPLIES WITH NATIONAL MAP ACCURACY STANDARDS
FOR SALE BY U.S. GEOLOGICAL SURVEY, P.O. BOX 25286, DENVER, COLORADO 80225
AND TENNESSEE DEPARTMENT OF CONSERVATION, DIVISION OF GEOLOGY,
NASHVILLE, TENNESSEE 37243
A FOLDER DESCRIBING TOPOGRAPHIC MAPS AND SYMBOLS IS AVAILABLE ON REQUEST



ROAD CLASSIFICATION
Heavy-duty ——— Light-duty ———
Medium-duty ——— Unimproved dirt ———
U.S. Route ——— State Route ———

JUN 19 2005

JAMESTOWN, TENN.
N 3622.5 W 8452.5/7.5

1954
PHOTOREVISED 1979
AMS 4056 IV NW—SERIES V841



USGS Library
Reston, VA.
Topo Archive

ISBN 060714927-4
9 780607 149272