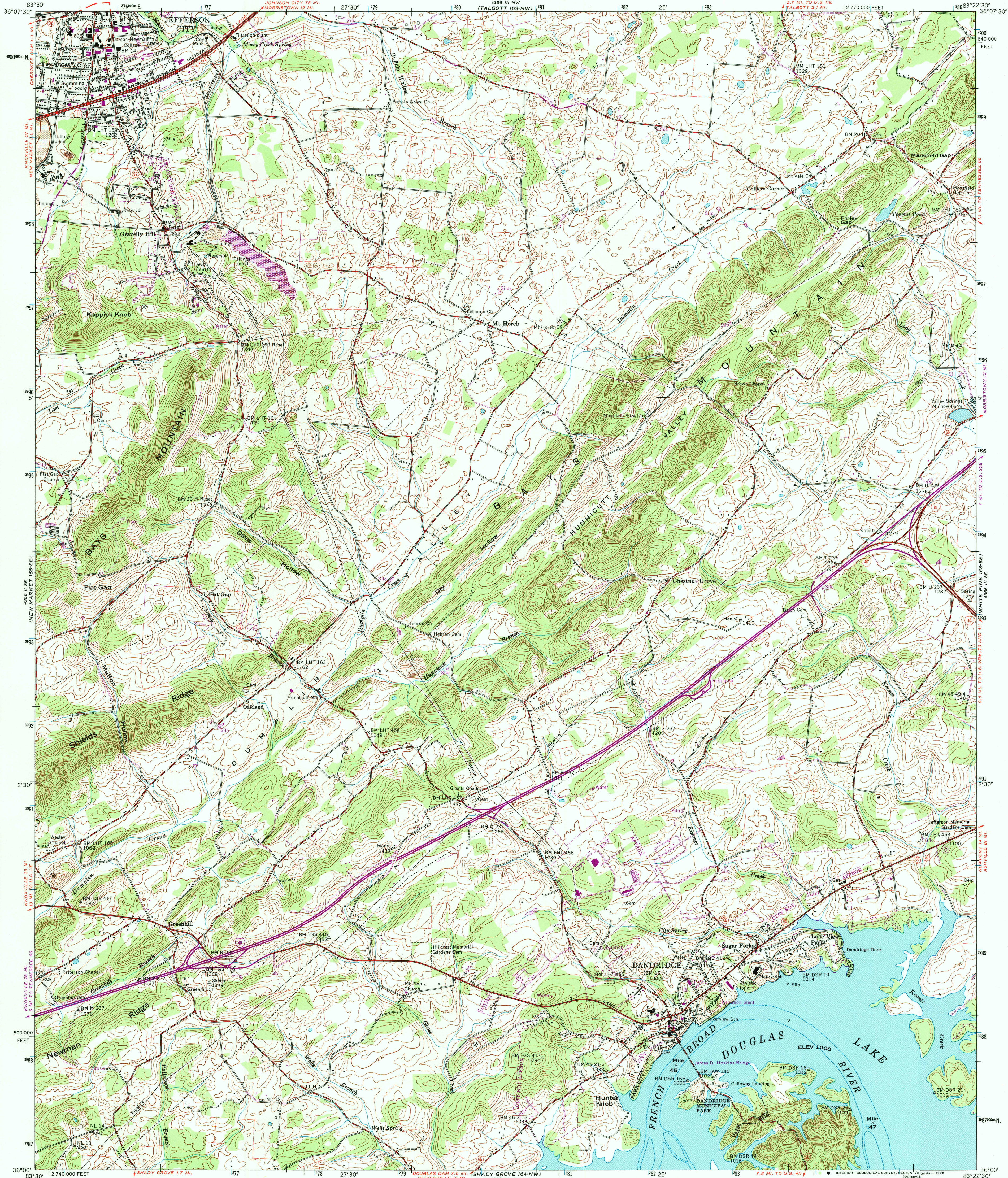


UNITED STATES  
DEPARTMENT OF THE INTERIOR  
GEOLOGICAL SURVEY

UNITED STATES  
TENNESSEE VALLEY AUTHORITY  
MAPPING SERVICES BRANCH

JEFFERSON CITY QUADRANGLE  
TENNESSEE-JEFFERSON CO.  
7.5 MINUTE SERIES (TOPOGRAPHIC) 163-SW



Mapped and edited by Tennessee Valley Authority  
Published by the Geological Survey

Control by NOS/NOAA, USGS, WPA, and TVA

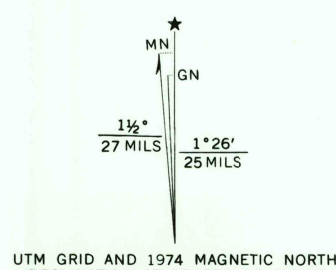
Revised by TVA in 1961 by photogrammetric methods using  
aerial photographs taken 1959 and by reference to TVA-USGS  
quadrangle dated 1939. Map field checked by TVA, 1961

Polyconic projection, based on North American datum  
10,000-foot grid based on Tennessee rectangular  
coordinate system

1000 metre Universal Transverse Mercator Grid ticks,  
Zone 17, shown in blue

Fine red dashed lines indicate selected fence and field lines  
visible on aerial photographs. This information is unchecked

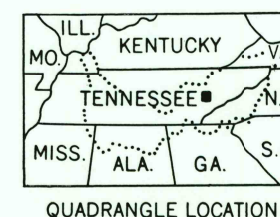
Revisions shown in purple and recombination of woodland  
areas compiled by the Tennessee Valley Authority from aerial  
photographs taken 1974. This information not field checked



SCALE 1:24 000

CONTOUR INTERVAL 20 FEET  
NATIONAL GEODETIC VERTICAL DATUM OF 1929

THIS MAP COMPLIES WITH NATIONAL MAP ACCURACY STANDARDS  
FOR SALE BY U.S. GEOLOGICAL SURVEY, RESTON, VIRGINIA 22092  
TENNESSEE DIVISION OF GEOLOGY, NASHVILLE, TENN. 37219  
U.S. TENNESSEE VALLEY AUTHORITY, CHATTANOOGA, TENN. 37401 OR KNOXVILLE, TENN. 37902  
A FOLDER DESCRIBING TOPOGRAPHIC MAPS AND SYMBOLS IS AVAILABLE ON REQUEST



**ROAD CLASSIFICATION**

Heavy-duty	Poor motor road
Medium-duty	Wagon and jeep track
Light-duty	Foot trail
Interstate Route	U. S. Route
In developed areas, only through roads are classified	State Route

**USGS AND HISTORICAL MAP ARCHIVES**  
JAN 23 1995  
REC'D FILE COPY

**JEFFERSON CITY, TENN.**  
N3600-W8322.5/7.5  
1961  
PHOTOREVISED 1974  
AMS 4356 III SW-SERIES 1941