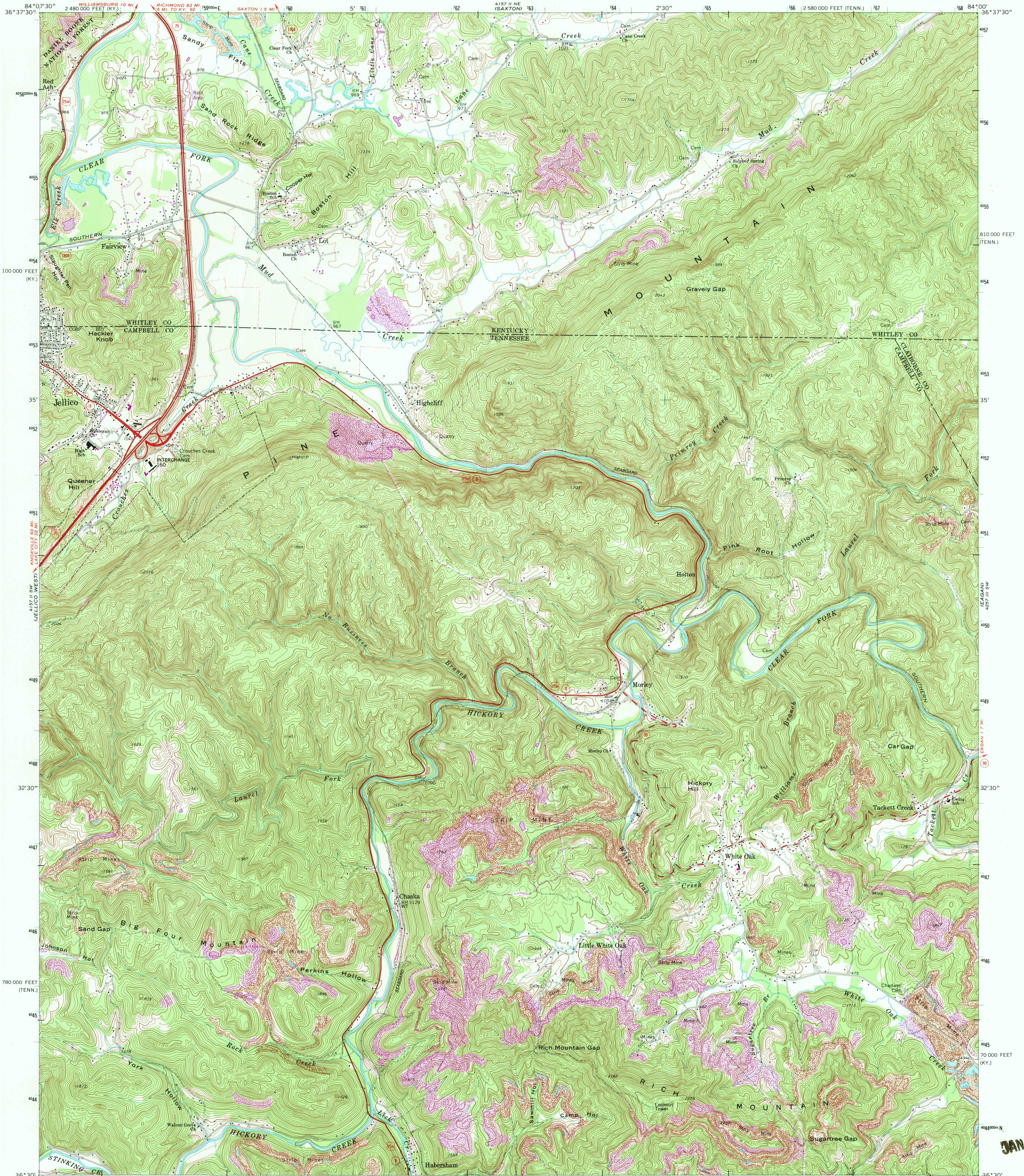
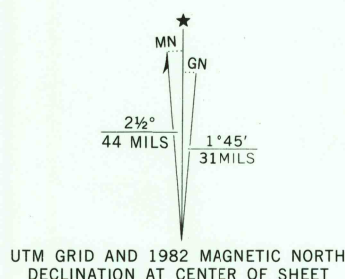


UNITED STATES
DEPARTMENT OF THE INTERIOR
GEOLOGICAL SURVEY

JELICO EAST QUADRANGLE
TENNESSEE-KENTUCKY
7.5 MINUTE SERIES (TOPOGRAPHIC)
SE/4 JELICO 15' QUADRANGLE



Mapped, edited, and published by the Geological Survey
in cooperation with State of Tennessee agencies and
Kentucky Geological Survey
Revised in cooperation with Kentucky Geological Survey
Control by USGS, NOS/NOAA, and Tennessee Valley Authority
Topography by photogrammetric methods from aerial photographs
taken 1951. Field checked 1953. Revised from aerial
photographs taken 1969. Field checked 1970.
Polyconic projection. 10,000-foot grid ticks based on
Tennessee coordinate system and Kentucky coordinate system,
south zone. 1000-meter Universal Transverse Mercator grid
ticks, zone 16, shown in blue. 1927 North American Datum
To place on the predicted North American Datum 1983
move the projection lines 6 meters south and 7 meters
west as shown by dashed corner ticks
There may be private inholdings within the boundaries
of the National or State reservations shown on this map



THIS MAP COMPLIES WITH NATIONAL MAP ACCURACY STANDARDS
FOR SALE BY U. S. GEOLOGICAL SURVEY, RESTON, VIRGINIA 22092,
KENTUCKY GEOLOGICAL SURVEY, LEXINGTON, KENTUCKY 40506
KENTUCKY DEPARTMENT OF COMMERCE, FRANKFORT, KENTUCKY 40601
AND TENNESSEE DEPARTMENT OF CONSERVATION, DIVISION OF GEOLOGY, NASHVILLE, TENN. 37219
A FOLDER DESCRIBING TOPOGRAPHIC MAPS AND SYMBOLS IS AVAILABLE ON REQUEST



ROAD CLASSIFICATION
Primary highway, hard surface
Secondary highway, hard surface
Light duty road, hard or improved surface
Unimproved road
Interstate Route
U. S. Route
State Route

JELICO EAST, TENN.-KY.
SE/4 JELICO 15' QUADRANGLE
36084-E1-TF-024

Revisions shown in purple and woodland compiled in cooperation
with State of Kentucky agencies from aerial photographs taken
1961 and other sources. Contours adjusted adjacent to certain photorevised
hydrographic features. This information not field checked. Map edited 1982

1970
PHOTOREVISED 1982
DMA 4157 II SE-SERIES V841

RETURN TO:
USGS AND HISTORICAL MAP ARCHIVES

JAN 13 1984