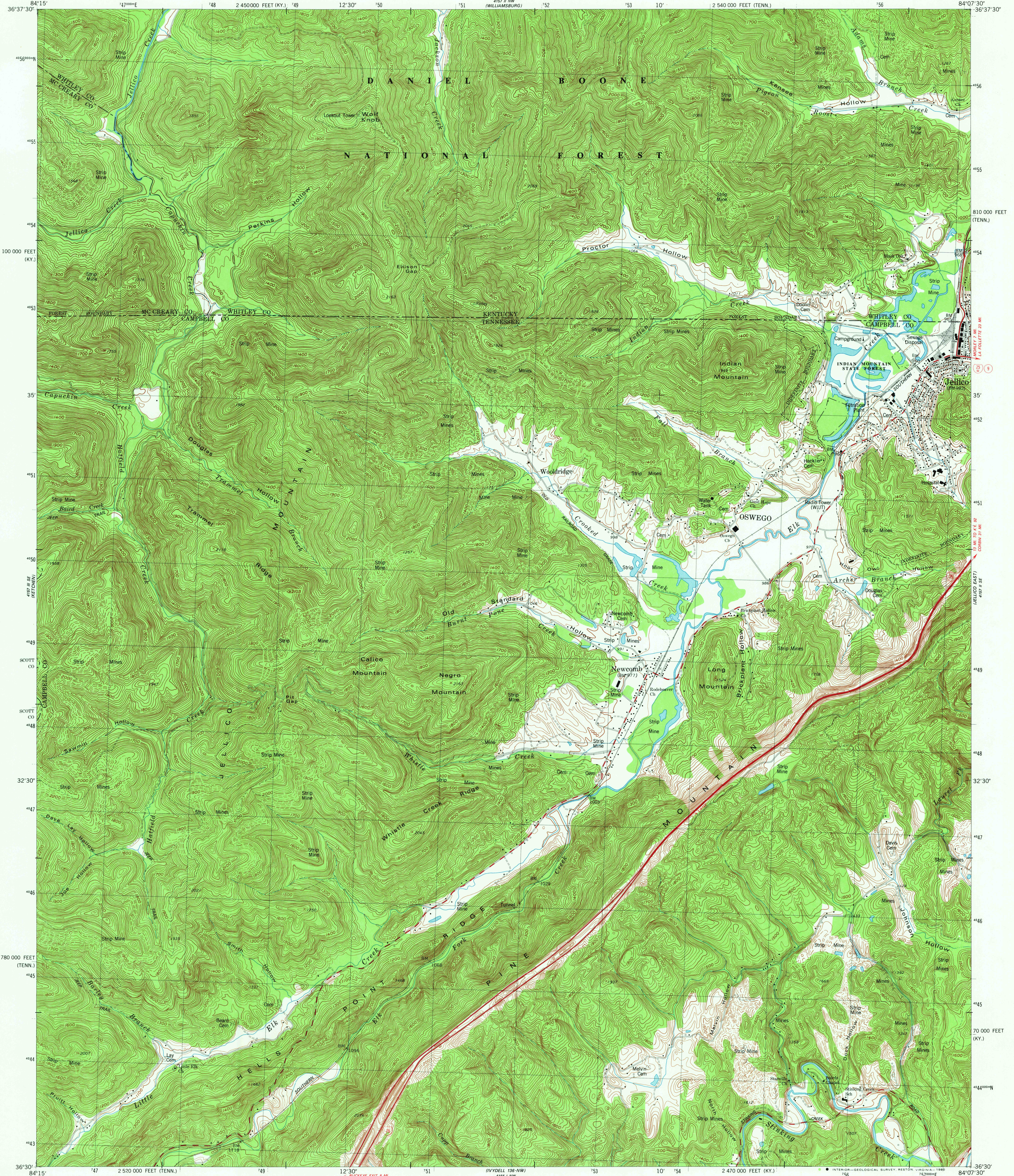
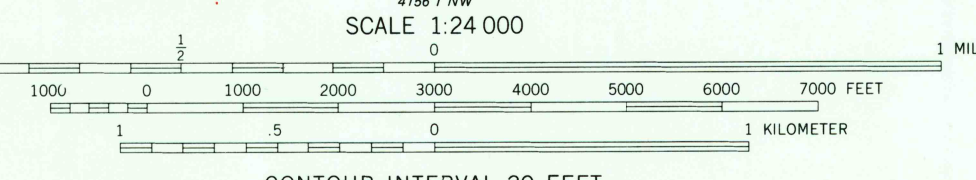
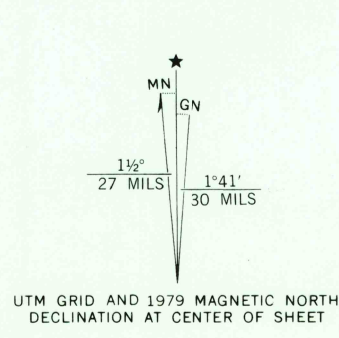


UNITED STATES
DEPARTMENT OF THE INTERIOR
GEOLOGICAL SURVEY

JELICO WEST QUADRANGLE
TENNESSEE-KENTUCKY
7.5 MINUTE SERIES (TOPOGRAPHIC)



Mapped, edited, and published by the Geological Survey in cooperation with State of Tennessee Agencies and Kentucky Geological Survey
Control by USGS and NOS/NOAA
Topography by photogrammetric methods from aerial photographs taken 1951. Field checked 1953. Revised from aerial photographs taken 1976. Field checked 1977. Map edited 1979
Polyconic projection. 1927 North American Datum
To place on the predicted North American Datum 1983 move the projection lines 6 meters south and 7 meters west as shown by dashed corner ticks
10,000-foot grid ticks based on Tennessee coordinate system and Kentucky coordinate system, south zone
1000-meter Universal Transverse Mercator grid, zone 16
There may be private inholdings within the boundaries of the National or State reservations shown on this map
Dashed contours in strip mine areas not revised



THIS MAP COMPLIES WITH NATIONAL MAP ACCURACY STANDARDS
FOR SALE BY U. S. GEOLOGICAL SURVEY, RESTON, VIRGINIA 22092,
KENTUCKY GEOLOGICAL SURVEY, LEXINGTON, KENTUCKY 40506,
KENTUCKY DEPARTMENT OF COMMERCE, FRANKFORT, KENTUCKY 40601,
AND TENNESSEE DIVISION OF GEOLOGY, NASHVILLE, TENNESSEE 37219
A FOLDER DESCRIBING TOPOGRAPHIC MAPS AND SYMBOLS IS AVAILABLE ON REQUEST



ROAD CLASSIFICATION
Primary highway, hard surface
Secondary highway, hard surface
Interstate Route
U. S. Route
State Route
Light-duty road, hard or improved surface
Unimproved road

JELICO WEST, TENN.-KY.
SW/4 JELICO 19' QUADRANGLE
N3630-W8407.5/7.5
1979
DMA 4157 II SW-SERIES V853

DEC 30 1981

1900