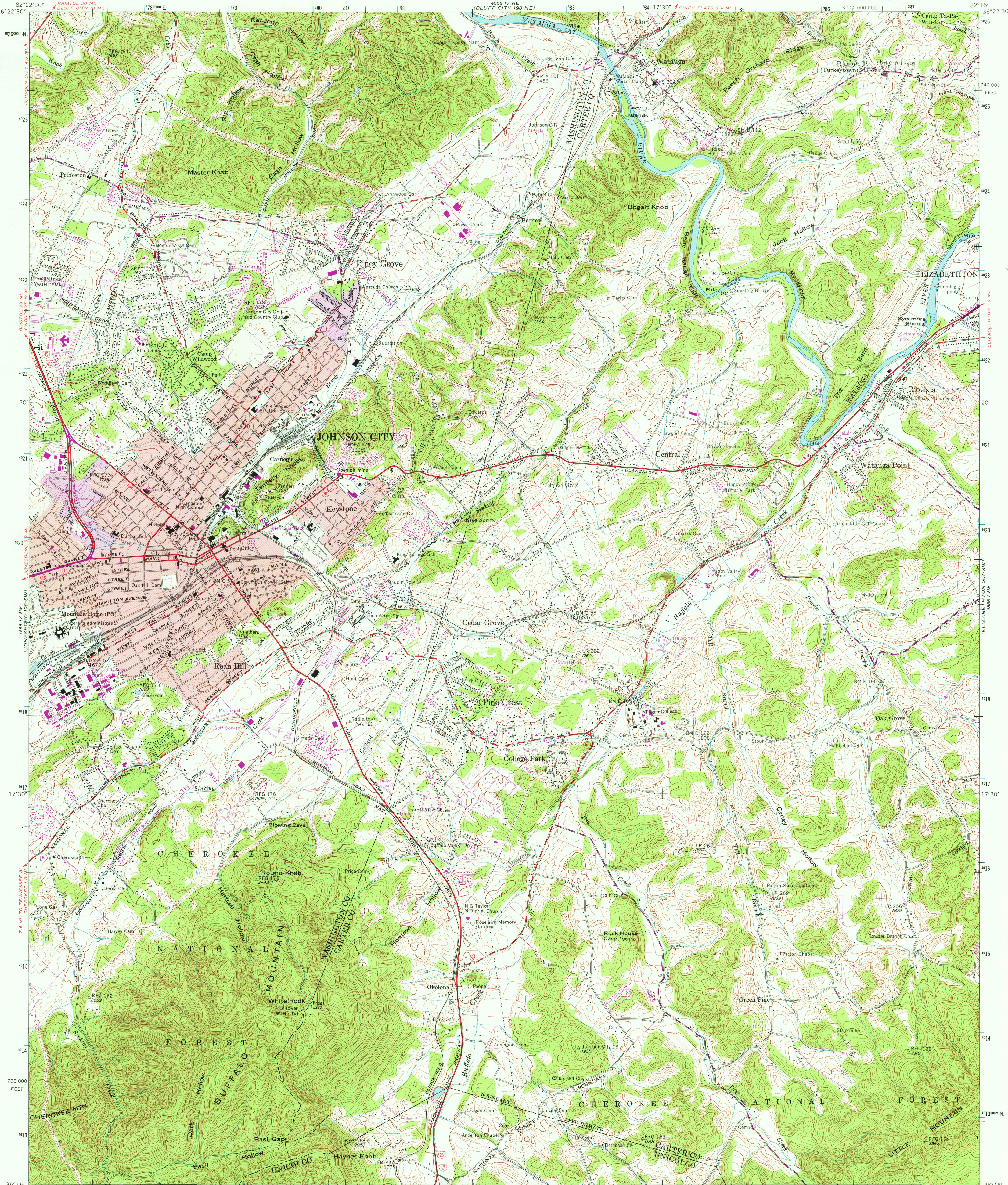


UNITED STATES
DEPARTMENT OF THE INTERIOR
GEOLOGICAL SURVEY

UNITED STATES
TENNESSEE VALLEY AUTHORITY
MAPS AND SURVEYS BRANCH

JOHNSON CITY QUADRANGLE
TENNESSEE
7.5 MINUTE SERIES (TOPOGRAPHIC) 198-SE



Mapped and edited by Tennessee Valley Authority
Published by the Geological Survey

Control by USGS, USGS, and TVA

Revised by TVA in 1958 by photogrammetric methods using
aerial photographs taken 1958 and by reference to TVA-USGS
quadrangle dated 1940. Map field checked by TVA, 1959

Polyconic projection, 1927 North American datum
10,000 foot grid based on Tennessee rectangular
coordinate system
1000 meter Universal Transverse Mercator Grid ticks,
Zone 17, shown in blue

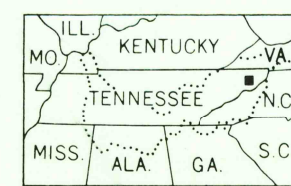
Red tint indicates areas in which only
landmark buildings are shown
Fine red dashed lines indicate selected fence and field lines
visible on aerial photographs. This information is unchecked

Revisions shown in purple and recompilation
of woodland areas compiled by the Tennessee
Valley Authority from aerial photographs taken
1968. This information not field checked
Purple tint indicates extension of urban areas

SCALE 1:240,000
CONTOUR INTERVAL 20 FEET
NATIONAL GEODETIC VERTICAL DATUM OF 1929

THIS MAP COMPLIES WITH NATIONAL MAP ACCURACY STANDARDS

FOR SALE BY U.S. GEOLOGICAL SURVEY, RESTON, VIRGINIA 22092,
TENNESSEE DIVISION OF GEOLOGY, NASHVILLE, TENN. 37219,
U.S. TENNESSEE VALLEY AUTHORITY, CHATTANOOGA, TENN. 37401 OR KNOXVILLE, TENN. 37902.
A FOLDER DESCRIBING TOPOGRAPHIC MAPS AND SYMBOLS IS AVAILABLE ON REQUEST



QUADRANGLE LOCATION

ROAD CLASSIFICATION
Heavy-duty Poor motor road
Medium-duty Wagon and jeep track
Light-duty Foot trail
In developed areas, only through roads are classified

USGS
Historical File
Topographic Division

JOHNSON CITY, TENN.
N3615-W8215/7.5

1959
PHOTOREVISED 1968
AMS 4556 IV SE-SERIES V841

MAR 15 1978

3450