

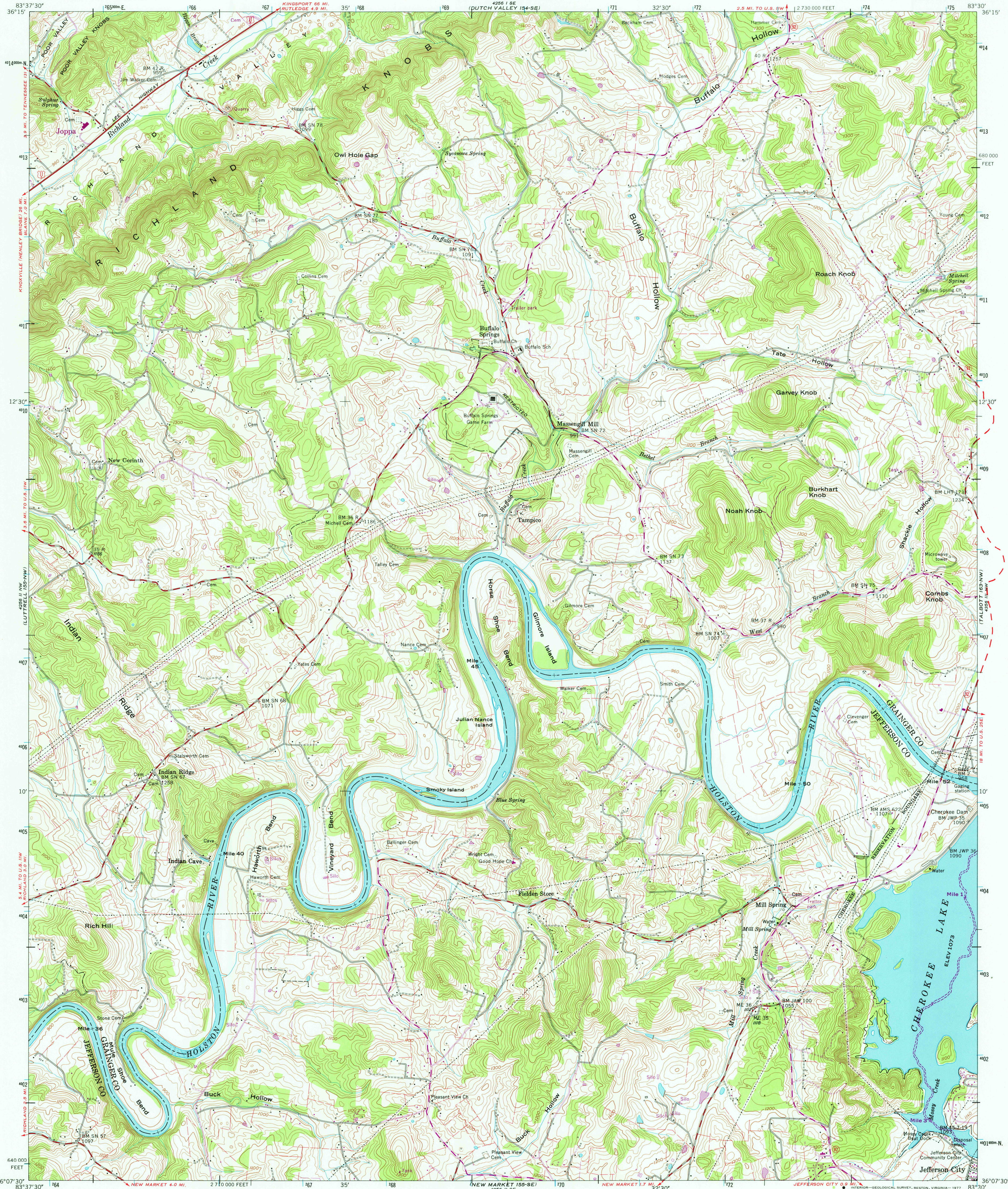
4256 I SE
4256 I SE
4256 I SE

4256 I SE
4256 I SE
4256 I SE

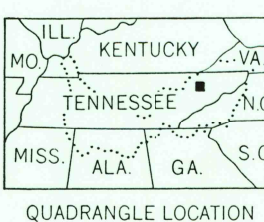
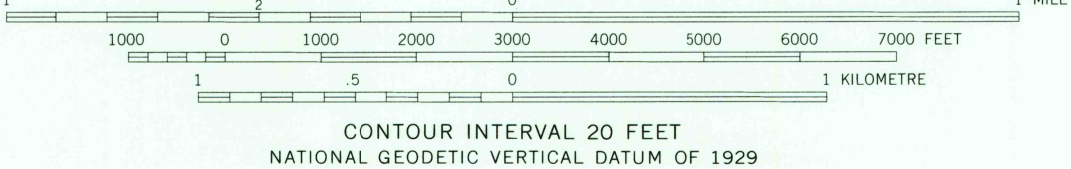
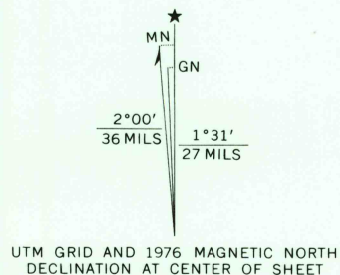
UNITED STATES
DEPARTMENT OF THE INTERIOR
GEOLOGICAL SURVEY

UNITED STATES
TENNESSEE VALLEY AUTHORITY
MAPPING SERVICES BRANCH

JOPPA QUADRANGLE
TENNESSEE
7.5 MINUTE SERIES (TOPOGRAPHIC) 155-NE



Mapped and edited by Tennessee Valley Authority
Published by the Geological Survey
Basic control by NOS/NOAA, USGS, and TVA
Revised by TVA in 1961 by photogrammetric methods using
aerial photographs taken 1959 and by reference to TVA-USGS
quadrangle dated 1938. Map field checked by TVA, 1961
Polyconic projection, 1927 North American datum
10,000 foot grid based on Tennessee rectangular
coordinate system
1000 metre Universal Transverse Mercator Grid ticks,
Zone 17, shown in blue
Fine red dashed lines indicate selected fence and field lines
visible on aerial photography. This information is unchecked
Revisions shown in purple and recompilation of woodland
areas compiled by the Tennessee Valley Authority from aerial
photographs taken 1976. This information not field checked



ROAD CLASSIFICATION	
Heavy-duty	Poor motor road
Medium-duty	Wagon and jeep track
Light-duty	Foot trail
U. S. Route	State Route
In developed areas, only through roads are classified	

THIS MAP COMPLIES WITH NATIONAL MAP ACCURACY STANDARDS
FOR SALE BY U.S. GEOLOGICAL SURVEY, RESTON, VIRGINIA 22092
TENNESSEE DIVISION OF GEOLOGY, NASHVILLE, TENN. 37219.
U.S. TENNESSEE VALLEY AUTHORITY, CHATTANOOGA, TENN. 37401 OR KNOXVILLE, TENN. 37902.
A FOLDER DESCRIBING TOPOGRAPHIC MAPS AND SYMBOLS IS AVAILABLE ON REQUEST

USGS
Historical File
Topographic Division

JOPPA, TENN.
N3607.5-W8330/7.5
1961

PHOTOREVISED 1976
AMS 4256 I NE-SERIES VB4I

2550
MAR 15 1978