

4355' 14" SW
MARYVILLE 14.5 MI
83°52'30"
35°45'

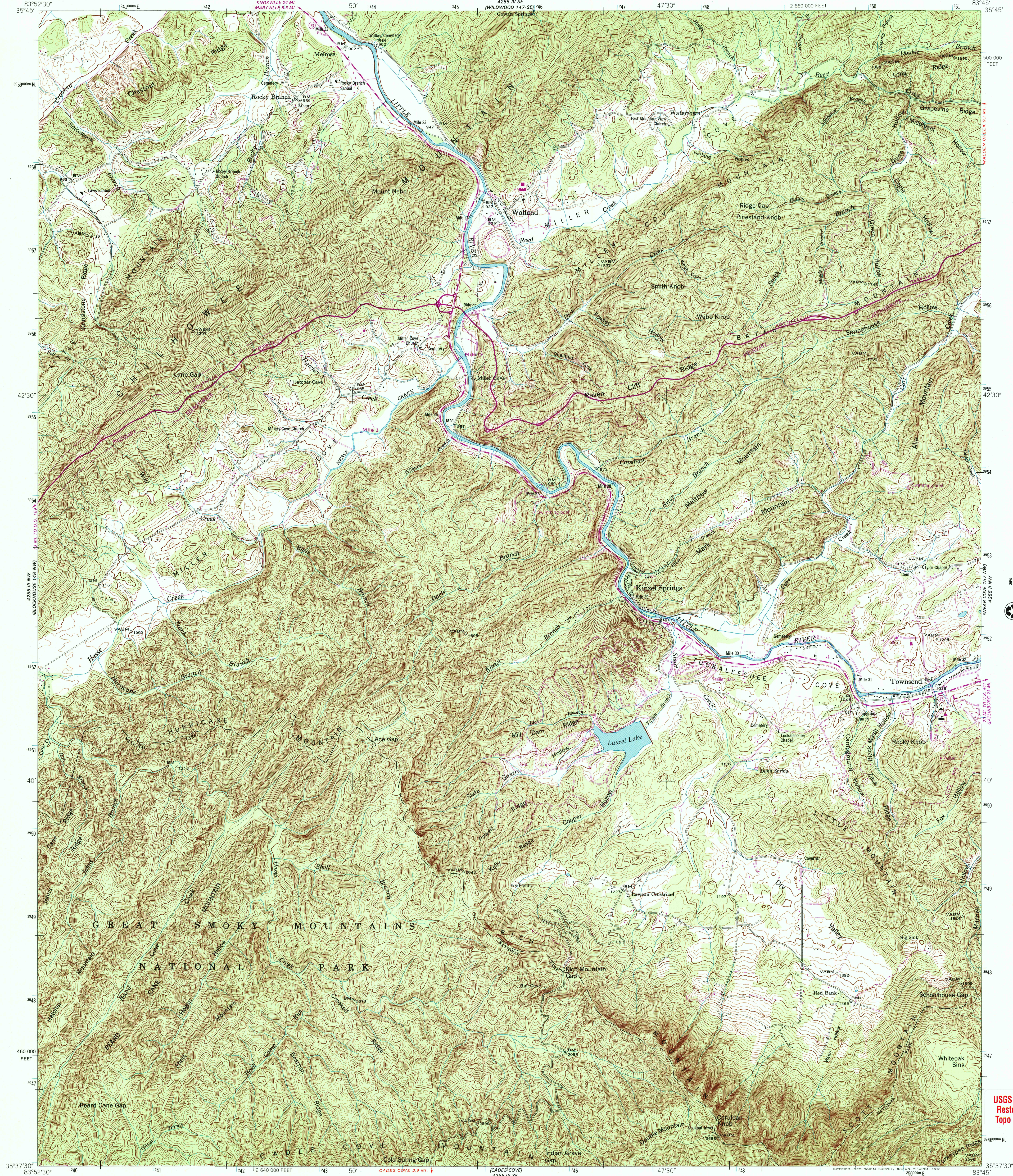


U.S. DEPARTMENT OF THE INTERIOR
U.S. GEOLOGICAL SURVEY

UNITED STATES
TENNESSEE VALLEY AUTHORITY
MAPPING SERVICES BRANCH
4255 IV SE
(WILDWOOD 147-SE) 746
Cowan Springs

KINZEL SPRINGS QUADRANGLE
TENNESSEE-BLOUNT CO.
7.5 MINUTE SERIES (TOPOGRAPHIC) 148-NE
83°45'
35°45'

4255' 15" SW
WALDEN CREEK 18.5 MI



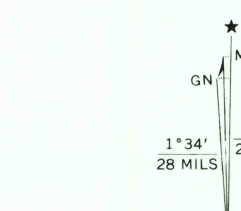
Mapped and edited by Tennessee Valley Authority
Published by the Geological Survey

Control by NOS/NOAA, USGS, and TVA

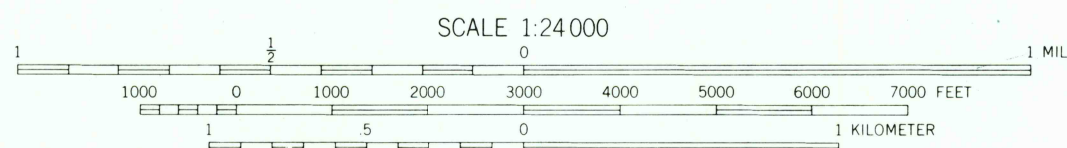
Revised in part by TVA 1952 by photogrammetric (multiplex)
methods using aerial photographs taken 1952 and by reference
to TVA-USGS quadrangle dated 1941. Original map compiled
by photogrammetric (multiplex) methods from aerial photographs
taken 1939. Map field checked by TVA 1953.

Polyconic projection. 1927 North American datum
10,000-foot grid based on Tennessee rectangular
coordinate system
1000-meter Universal Transverse Mercator grid ticks,
zone 17, shown in blue

Fine purple dashed lines indicate selected
fence and field lines visible on aerial
photographs. This information is unchecked

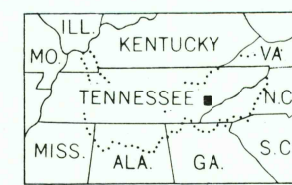


Revisions shown in purple and recompilation
of woodland areas compiled by the Tennessee
Valley Authority from aerial photographs taken
1976. This information not field checked
Map edited 1978.



CONTOUR INTERVAL 20 FEET
NATIONAL GEODETIC VERTICAL DATUM OF 1929

THIS MAP COMPLIES WITH NATIONAL MAP ACCURACY STANDARDS
FOR SALE BY U.S. GEOLOGICAL SURVEY, P.O. BOX 25286, DENVER, COLORADO 80225
AND TENNESSEE DEPARTMENT OF CONSERVATION, DIVISION OF GEOLOGY,
NASHVILLE, TENNESSEE 37243
A FOLDER DESCRIBING TOPOGRAPHIC MAPS AND SYMBOLS IS AVAILABLE ON REQUEST



QUADRANGLE LOCATION

ROAD CLASSIFICATION
Heavy duty Poor motor road
Medium duty Wagon and jeep track
Light duty Foot trail
U.S. Route State Route
In developed areas, only through roads are classified

KINZEL SPRINGS, TENN.
N3537.5-W8345.7 5

1953
PHOTOREVISED 1978
AMS 4255 III NE-SERIES 841



APR 21 2005

USGS Library
Reston, VA.
Topo Archive

