

3655 IV NW
(KNOXVILLE SERVICES)

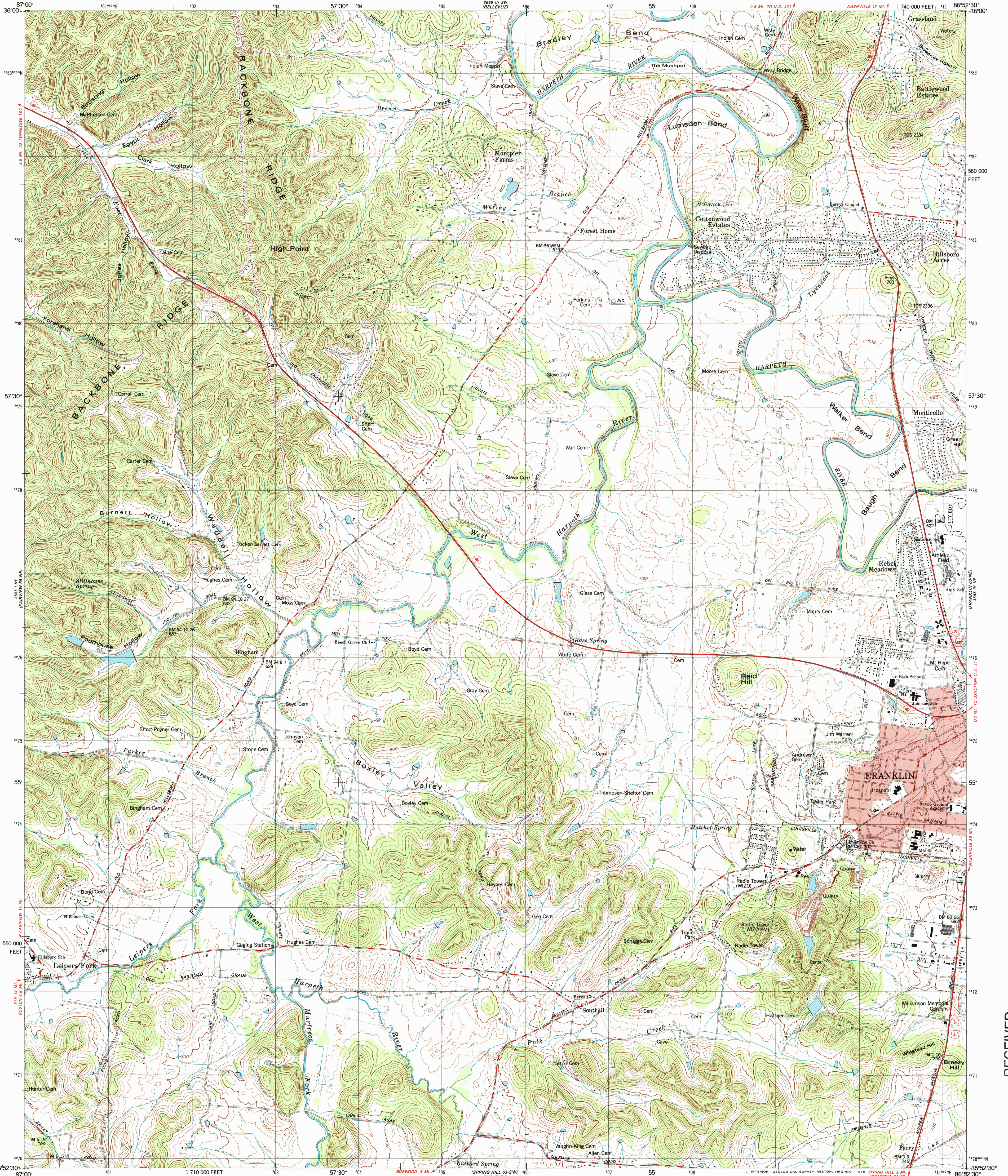


U.S. DEPARTMENT OF THE INTERIOR
U.S. GEOLOGICAL SURVEY

UNITED STATES
TENNESSEE VALLEY AUTHORITY
MAPPING SERVICES BRANCH

LEIPERS FORK QUADRANGLE
TENNESSEE-WILLIAMSON CO.
7.5 MINUTE SERIES (TOPOGRAPHIC) 63-NW

3655 IV SE
(KNOX HILL)



3655 IV SE
(KNOX HILL)

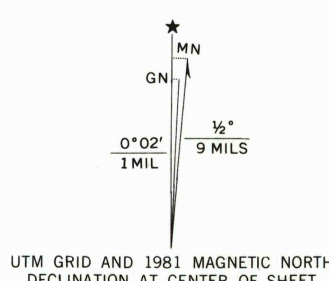
Mapped and edited by Tennessee Valley Authority
Published by the Geological Survey

Control by NOS/NOAA, USGS, THD, WPA, and TVA

Revised by TVA in 1979 by photogrammetric methods using
aerial photographs taken 1977 and by reference to TVA-USGS
quadrangle dated 1946. Map field checked by TVA, 1979
Map edited 1981

Polycyclic projection 10,000-foot grid ticks based on Tennessee
coordinate system. 1000-meter Universal Transverse Mercator
grid, zone 16. 1927 North American Datum.
To place on the predicted North American Datum 1983 move
the projection lines 6 meters south as shown by dashed
corner ticks.

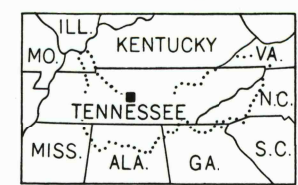
Fine red dashed lines indicate selected fence and field lines
visible on aerial photographs. This information is unchecked
Red tint indicates area in which only landmark buildings are shown.



SCALE 1:24 000
1 0000 0 1000 2000 3000 4000 5000 6000 7000 FEET
1 0.5 1 KILOMETER

CONTOUR INTERVAL 20 FEET
DASHED LINES REPRESENT HALF INTERVAL CONTOURS
NATIONAL GEODETIC VERTICAL DATUM OF 1929

THIS MAP COMPLIES WITH NATIONAL MAP ACCURACY STANDARDS
FOR SALE BY U. S. GEOLOGICAL SURVEY, DENVER, COLORADO 80225 OR RESTON, VIRGINIA 22092
TENNESSEE DEPARTMENT OF CONSERVATION, DIVISION OF GEOLOGY, NASHVILLE, TENN. 37219
AND U. S. TENNESSEE VALLEY AUTHORITY, CHATTANOOGA, TENN. 37401 OR KNOXVILLE, TENN. 37902
A FOLDER DESCRIBING TOPOGRAPHIC MAPS AND SYMBOLS IS AVAILABLE ON REQUEST



QUADRANGLE LOCATION

ROAD CLASSIFICATION (TVA 63-NW)
Primary highway, all weather, hard surface
Secondary highway, all weather, hard surface
Light-duty road, all weather, improved surface
Unimproved road, fair or dry weather
Interstate Route
U. S. Route
State Route

LEIPERS FORK, TENN.
35086-H8-TF-024

1981

DMA 3655 IV NW-SERIES V84.1

RECEIVED

2002

USGS NHD

HISTORICAL MAP ARCHIVES

