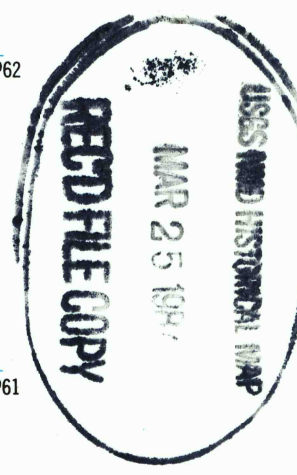
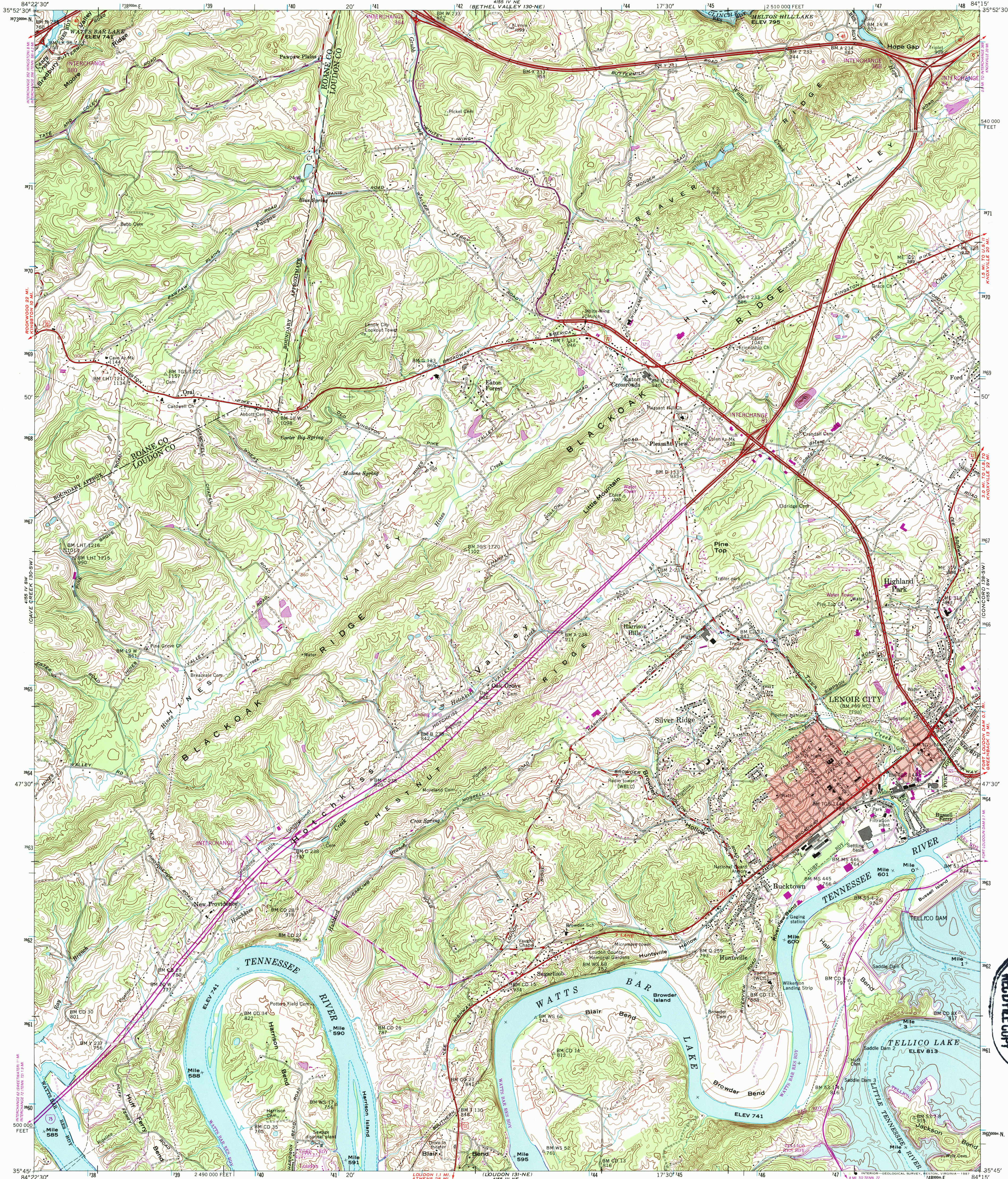


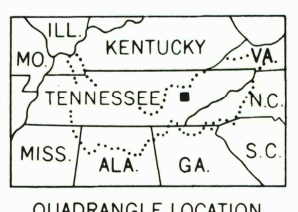
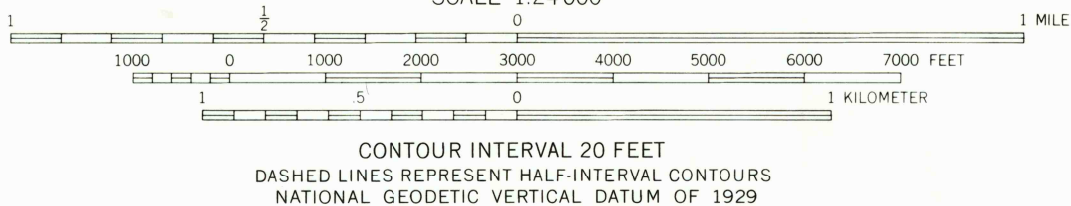
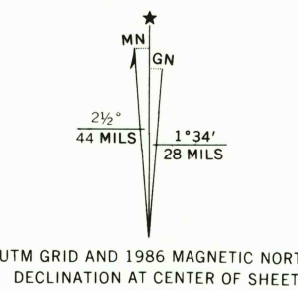
UNITED STATES  
DEPARTMENT OF THE INTERIOR  
GEOLOGICAL SURVEY

UNITED STATES  
TENNESSEE VALLEY AUTHORITY  
MAPPING SERVICES BRANCH

LENOIR CITY QUADRANGLE  
TENNESSEE  
7.5 MINUTE SERIES (TOPOGRAPHIC) 130-SE



Mapped and edited by Tennessee Valley Authority  
Published by the Geological Survey  
Control by NOS/NOAA, USGS, WPA, and TVA  
Revised by TVA in 1968 by photogrammetric methods using  
aerial photographs taken 1967 and by reference to TVA-USGS  
quadrangle dated 1953. Map field checked by TVA, 1968  
Polyconic projection. 10,000-foot grid ticks based on Tennessee  
coordinate system. 1000-meter Universal Transverse Mercator  
grid ticks, zone 16, shown in blue. 1927 North American Datum  
To place on the predicted North American Datum 1983  
move the projection lines 6 meters south and 7 meters  
west as shown by dashed corner ticks  
Fine red dashed lines indicate selected fence and field lines where  
generally visible on aerial photographs. This information is unchecked  
Red tint indicates areas in which only landmark buildings are shown



ROAD CLASSIFICATION  
Primary highway, all weather, hard surface  
Secondary highway, all weather, hard surface  
Light-duty road, all weather, improved surface  
Unimproved road, fair or dry weather  
Interstate Route  
U. S. Route  
State Route

LENOIR CITY, TENN.  
35084-G3-TF-024

1968  
PHOTOREVISED 1986  
DMA 4155 IV SE-SERIES V841

THIS MAP COMPLIES WITH NATIONAL MAP ACCURACY STANDARDS  
FOR SALE BY U.S. GEOLOGICAL SURVEY, DENVER, COLORADO 80225, OR RESTON, VIRGINIA 22092  
TENNESSEE DEPARTMENT OF CONSERVATION, DIVISION OF GEOLOGY, NASHVILLE, TENN. 37219  
AND U.S. TENNESSEE VALLEY AUTHORITY, CHATTANOOGA, TENN. 37401, OR KNOXVILLE, TENN. 37902  
A FOLDER DESCRIBING TOPOGRAPHIC MAPS AND SYMBOLS IS AVAILABLE ON REQUEST

Revisions shown in purple and woodland compiled by  
the Tennessee Valley Authority from aerial photographs  
taken 1981 and other sources. Contours adjusted  
adjacent to certain photorevised hydrographic features.  
This information not field checked. Map edited 1986