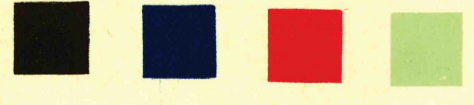


TEMPLE HILL
1:62,500

TENNESSEE-KENTUCKY 1:100,000

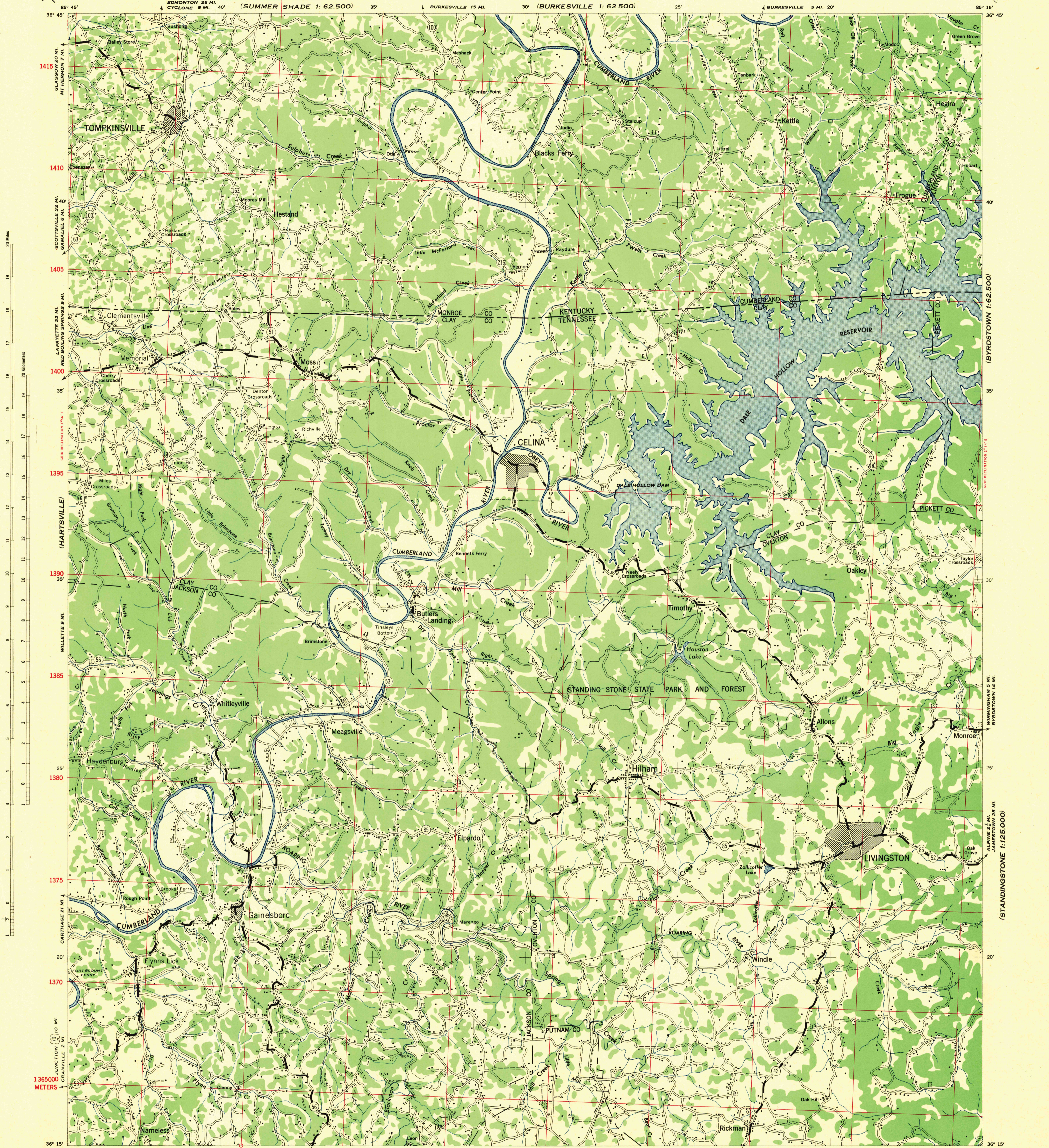


WAR DEPARTMENT
CORPS OF ENGINEERS, U. S. ARMY

FIRST EDITION-AMS 3

LIVINGSTON QUADRANGLE
30 MINUTE SERIES

CREELSBORO
1:62,500



STATESVILLE

First edition 1943; revised 1945, revised 1946.
Compiled and reproduced by Tennessee Valley Authority under the direction of the Chief of Engineers, U. S. Army, 1943.
Basic control by U. S. Coast and Geodetic Survey and U. S. Geological Survey. Compiled from County road maps, and TVA/USGS planimetric and topographic maps. Partially revised from photo maps by Aero Service Corporation, Philadelphia, Penna., 1943.
Road classifications for main and connecting routes from field inspection, March 1943. Polyconic projection, North American Datum 1927.
Approximate reservation boundary, August 1943.

ROAD CLASSIFICATION 1943

Dependable hard-surface, heavy-duty road. ———— U. S. Route 70
Loose-surface graded, dry-weather road. ———— U. S. Route 56
Secondary, hard-surface, all-weather road. ———— State Route
Dirt road. ————
More than two lanes indicated by note along road with tick at point of change. 3 LANE 4 LANE

DALE HOLLOW RESERVOIR NOT COMPLETE AT TIME OF COMPILATION.
SCHEDULED TO BE FILLED APRIL 1, 1943.

Scale 1:100,000

1 2 3 4 5 6 Miles

1000 0 1000 2000 3000 4000 5000 6000 7000 8000 Meters

1000 0 1000 2000 3000 4000 5000 6000 Yards

FIVE THOUSAND METER GRID CONVERTED FROM GRID SYSTEM FOR PROGRESSIVE MAPS IN THE U. S. ZONE 'C' U. S. C. & G. S. SPECIAL PUBLICATION NO. 55.

THE LAST THREE DIGITS OF THE GRID NUMBERS ARE OMITTED.

NOTE: OFFICERS USING THIS MAP WILL MARK HEREON CORRECTIONS AND ADDITIONS WHICH COME TO THEIR ATTENTION AND MAIL DIRECT TO THE CHIEF OF ENGINEERS, WASHINGTON, D. C.

USGS
HISTORICAL FILE
TOPOGRAPHIC DIVISION

4/44 SX

1944

U. S. G. S.
FILE COPY
Inspection and Editing

Use diagram only to obtain numerical values.
To determine magnetic north line, connect the point and 'N' on the south edge of the map with the value of the angle between GRID NORTH and MAGNETIC NORTH, as plotted on the degree scale at the north edge of the map.

APPROXIMATE MEAN DECLINATION 1944 FOR CENTER OF SHEET
ANNUAL MAGNETIC CHANGE 2" INCREASE

LIVINGSTON, TENN.-KY.
N3615-W8515/30

STANDINGSTONE 1:125,000