

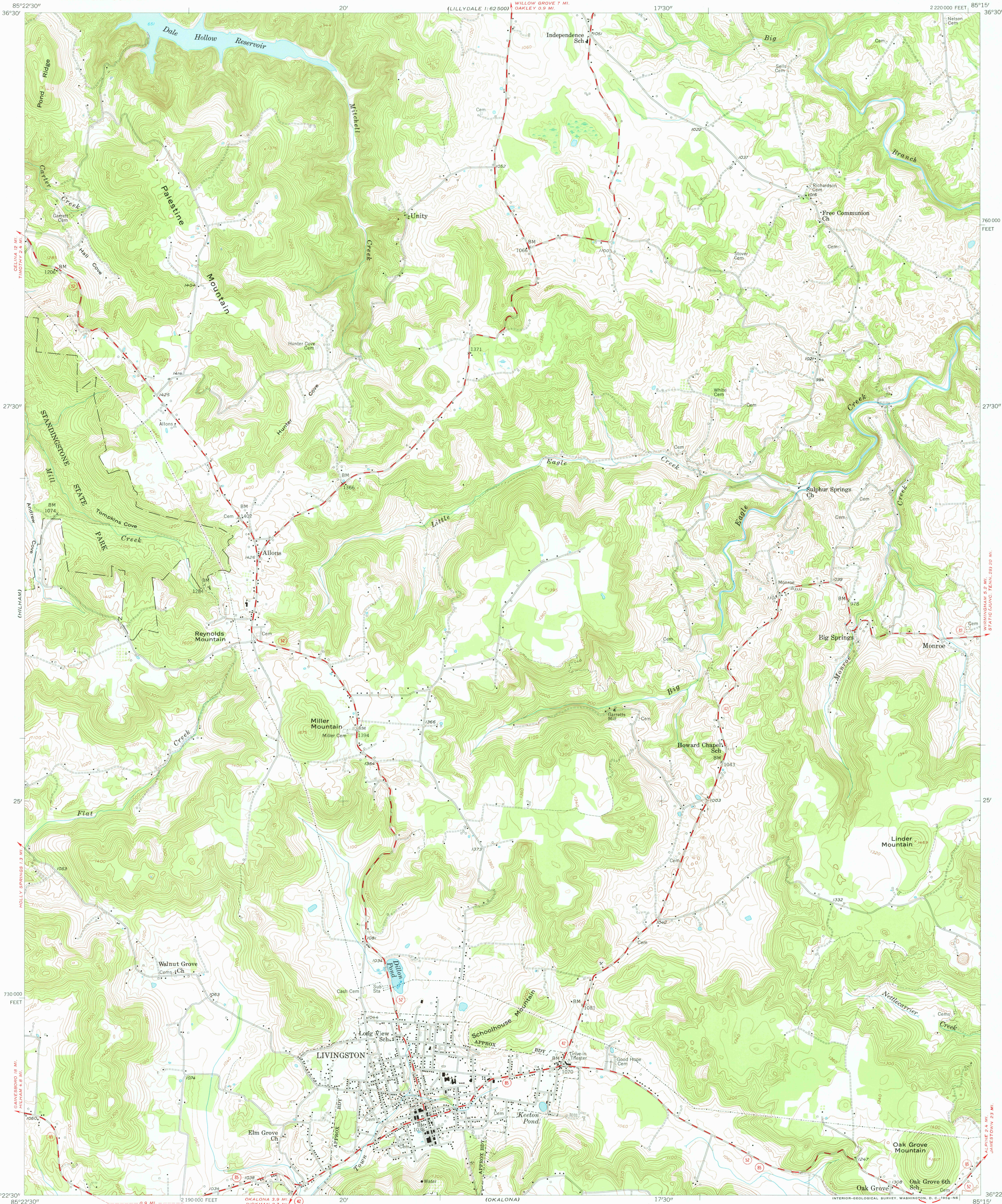
LILLYDALE 1:62,500

UNITED STATES
DEPARTMENT OF THE INTERIOR
GEOLOGICAL SURVEY

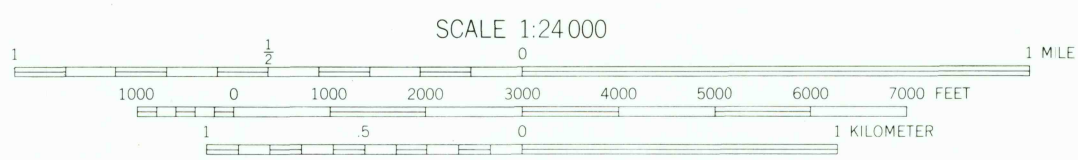
STATE OF TENNESSEE
DEPARTMENT OF CONSERVATION
DIVISION OF GEOLOGY
(LILLYDALE 1:62,500) (WILLOW GROVE 1 MI.) (OAKLEY 0.9 MI.)

LIVINGSTON QUADRANGLE
TENNESSEE—OVERTON CO.
7.5 MINUTE SERIES (TOPOGRAPHIC)

(BYROSTOWN)



Mapped, edited, and published by the Geological Survey
Control by USGS and USC&GS
Topography from aerial photographs by multiplex methods
Aerial photographs taken 1950. Field check 1955
Polyconic projection. 1927 North American datum
10,000-foot grid based on Tennessee coordinate system
Unchecked elevations are shown in brown



CONTOUR INTERVAL 20 FEET
DATUM IS MEAN SEA LEVEL



ROAD CLASSIFICATION
Heavy-duty ——— Light-duty ———
Medium-duty ——— Unimproved dirt ———
U.S. Route ——— State Route ———

LIVINGSTON, TENN.
N 3622.5—W 8515/7.5

1955

USGS
Historical File
Topographic Division

THIS MAP COMPLIES WITH NATIONAL MAP ACCURACY STANDARDS
FOR SALE BY U. S. GEOLOGICAL SURVEY, WASHINGTON 25, D. C.
AND TENNESSEE DIVISION OF GEOLOGY, NASHVILLE, TENN.
A FOLDER DESCRIBING TOPOGRAPHIC MAPS AND SYMBOLS IS AVAILABLE ON REQUEST