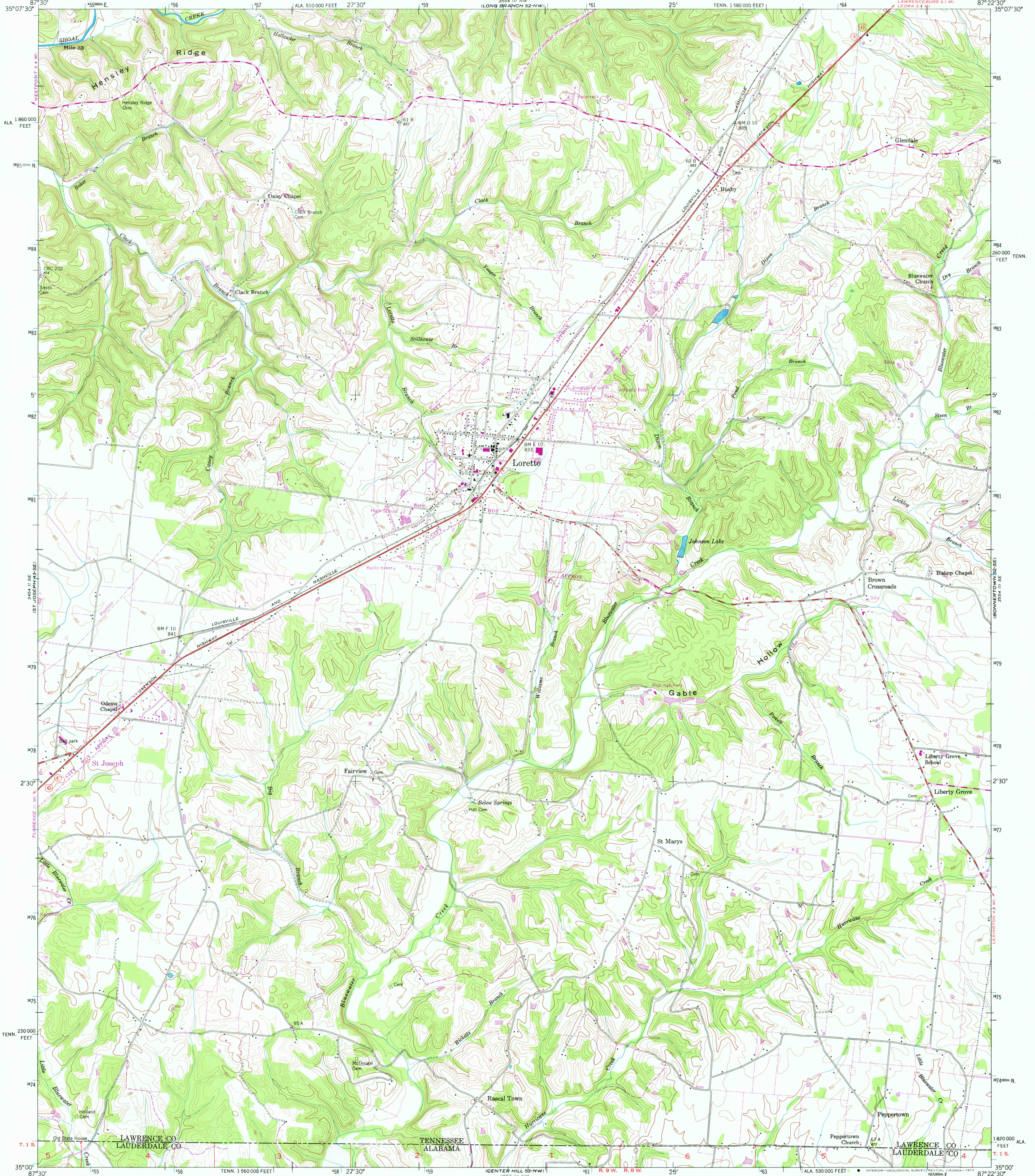


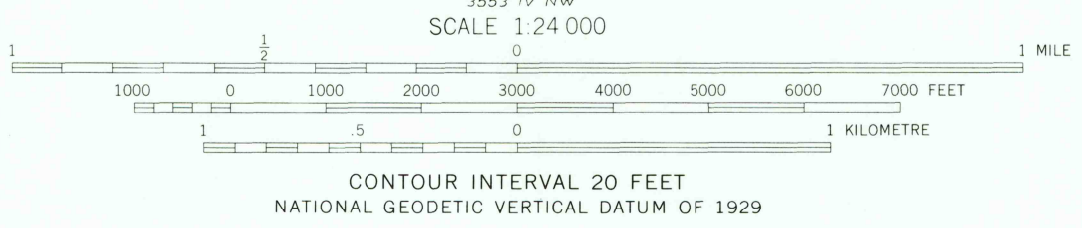
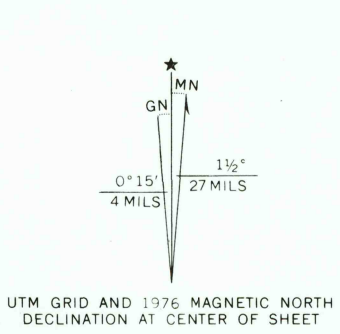
UNITED STATES  
DEPARTMENT OF THE INTERIOR  
GEOLOGICAL SURVEY

UNITED STATES  
TENNESSEE VALLEY AUTHORITY  
MAPPING SERVICES BRANCH

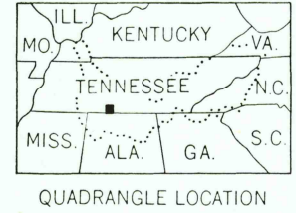
LORETTO QUADRANGLE  
TENNESSEE-ALABAMA  
7.5 MINUTE SERIES (TOPOGRAPHIC) 52-SW



Mapped and edited by Tennessee Valley Authority  
Published by the Geological Survey  
Control by NOS/NOAA, USGS, and TVA  
Topography by USGS and TVA by photogrammetric methods using  
aerial photographs taken 1946. Map field checked by TVA, 1950  
Polyconic projection, 1927 North American datum  
10,000 foot grid based on Tennessee and Alabama (West)  
rectangular coordinate systems  
1000 metre Universal Transverse Mercator Grid ticks,  
Zone 16, shown in blue  
Fine purple dashed lines indicate selected fence and field lines  
visible on aerial photographs. This information is unchecked.  
Revisions shown in purple and recompilation of woodland  
areas compiled by the Tennessee Valley Authority from aerial  
photographs taken 1976. This information not field checked



THIS MAP COMPLIES WITH NATIONAL MAP ACCURACY STANDARDS  
FOR SALE BY U.S. GEOLOGICAL SURVEY, RESTON, VIRGINIA 22092  
TENNESSEE DIVISION OF GEOLOGY, NASHVILLE, TENN. 37219  
U.S. TENNESSEE VALLEY AUTHORITY, CHATTANOOGA, TENN. 37401 OR KNOXVILLE, TENN. 37902.  
A FOLDER DESCRIBING TOPOGRAPHIC MAPS AND SYMBOLS IS AVAILABLE ON REQUEST



ROAD CLASSIFICATION  
Heavy-duty ..... Poor motor road .....  
Medium-duty ..... Wagon and jeep track .....  
Light-duty ..... Foot trail .....  
In developed areas, only through roads are classified  
U.S. Route ..... State Route .....  
USGS  
Historical File  
Topographic Division  
LORETTO, TENN.-ALA. 2800  
N3500-W8722.5/7.5  
1950  
PHOTOREVISED 1976  
AMS 3554 III SW-SERIES V84I

MAR 15 1978