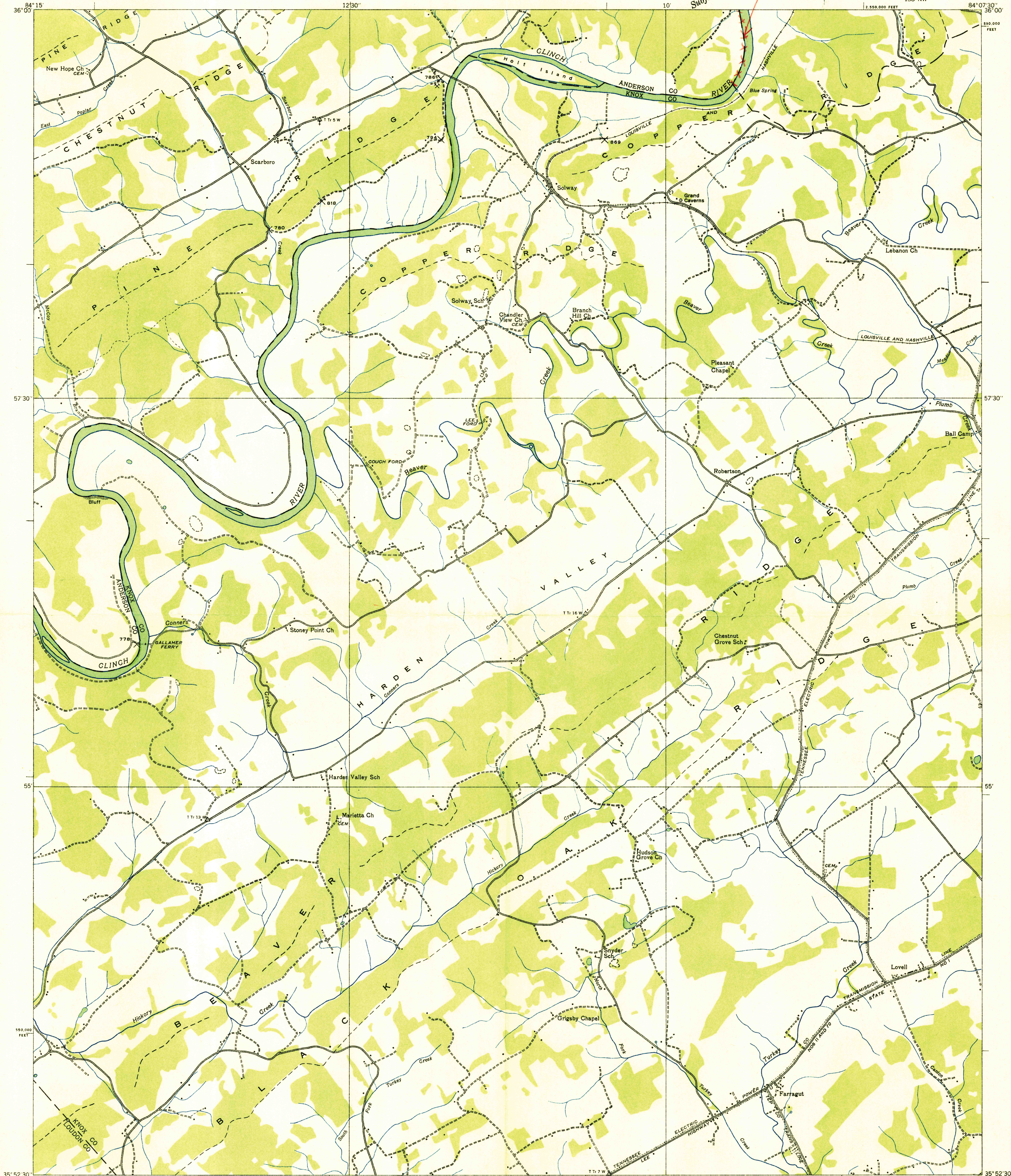
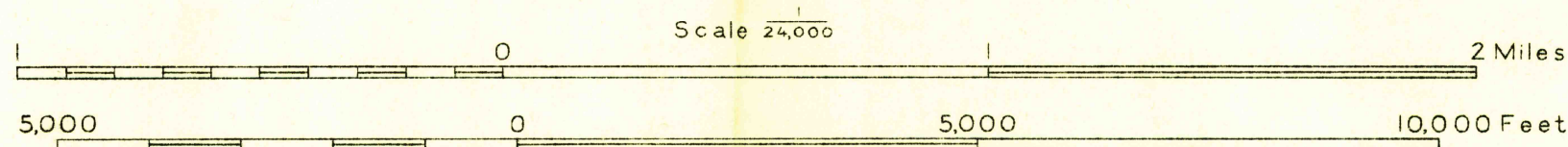


Advance sheet
Subject to correction
MCO. 841



Albert Pike, Division Engineer
Compiled by U. S. Geological Survey from aerial photographs
Control by U. S. Geological Survey and Corps of Engineers, U. S. Army
Field examination in 1935



Datum is mean sea level

USGS
HISTORICAL FILE
TOPOGRAPHIC DIVISION

Ridge line
Trail
Sinks
LOVELL, TENN
138-NW

Polyconic projection, 1927 North American datum
10,000 foot grid based on Tennessee
rectangular coordinate system

APPROXIMATE MEAN
DECLINATION, 1985