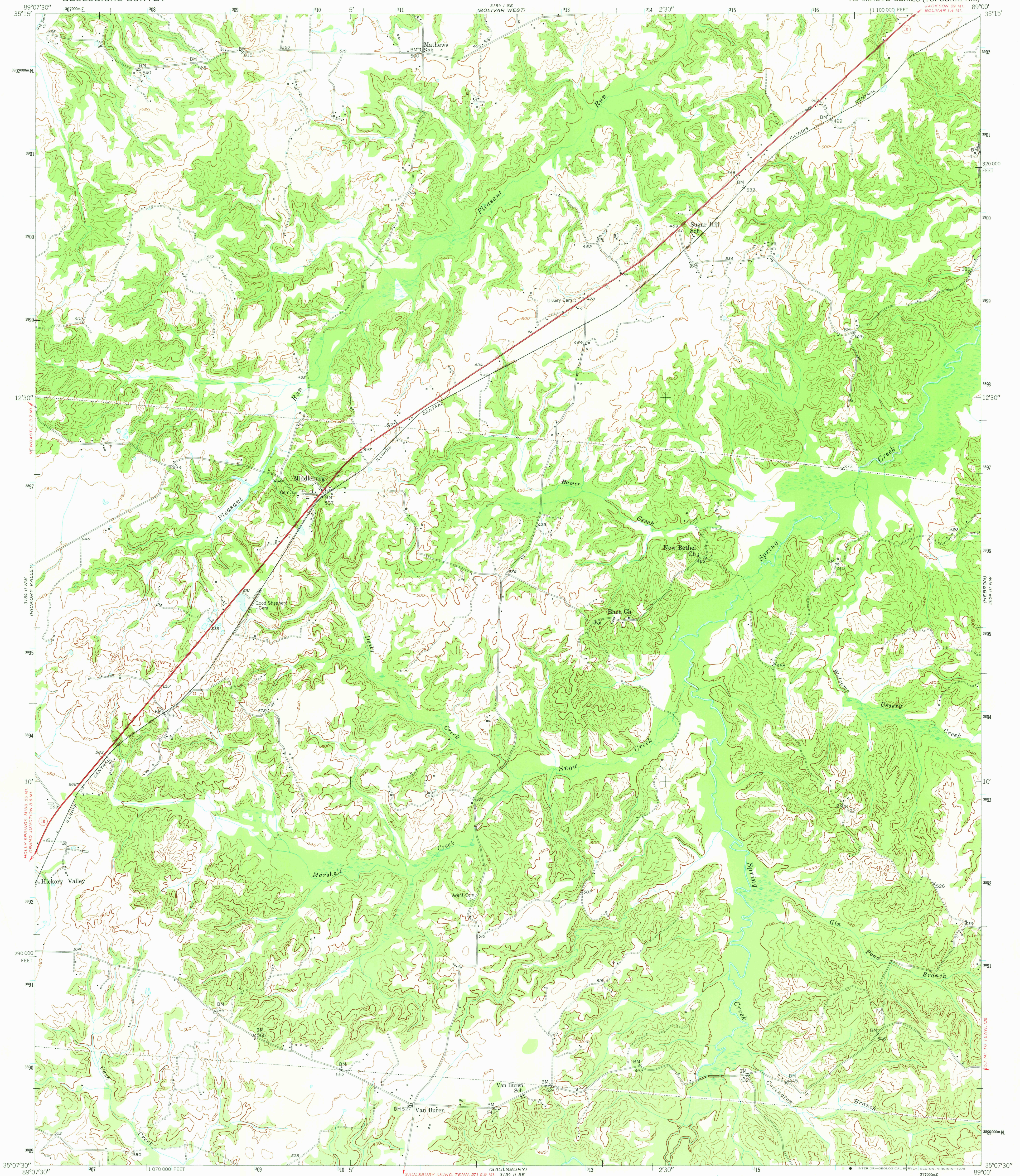
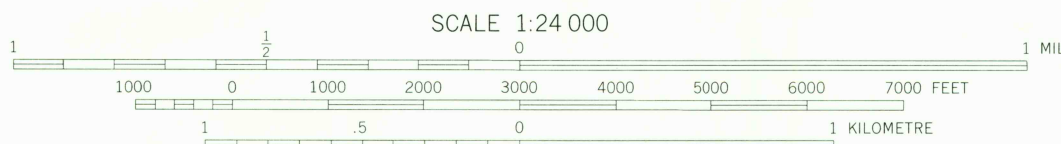
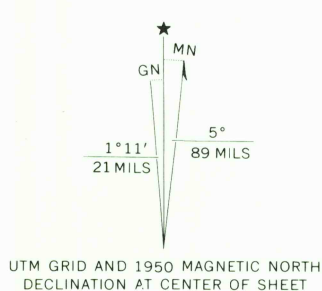


UNITED STATES  
DEPARTMENT OF THE INTERIOR  
GEOLOGICAL SURVEY

MIDDLEBURG QUADRANGLE  
TENNESSEE-HARDEMAN CO.  
7.5 MINUTE SERIES (TOPOGRAPHIC)



Mapped, edited, and published by the Geological Survey  
Control by USGS and USC&GS  
Topography from aerial photographs by stereopair  
Aerial photographs taken 1947. Field check 1950  
Polyconic projection. 1927 North American datum  
10,000-foot grid based on Tennessee coordinate system  
1000-metre Universal Transverse Mercator grid ticks,  
zone 16, shown in blue



CONTOUR INTERVAL 20 FEET  
DOTTED LINES REPRESENT HALF-INTERVAL CONTOURS  
NATIONAL GEODETIC VERTICAL DATUM OF 1929  
THIS MAP COMPLIES WITH NATIONAL MAP ACCURACY STANDARDS  
FOR SALE BY U.S. GEOLOGICAL SURVEY, RESTON, VIRGINIA 22092  
A FOLDER DESCRIBING TOPOGRAPHIC MAPS AND SYMBOLS IS AVAILABLE ON REQUEST

ROAD CLASSIFICATION  
Heavy-duty 4-LANE ROAD Light-duty 2-LANE ROAD  
Medium-duty 4-LANE ROAD Unimproved dirt  
U. S. Route State Route

MIDDLEBURG, TENN.  
N3507.5-W8900.7.5

USGS  
HISTORICAL FILE  
TOPOGRAPHIC DIVISION

1950  
AMS 3154 II NE-SERIES V841

JUN 6 1975  
1650