

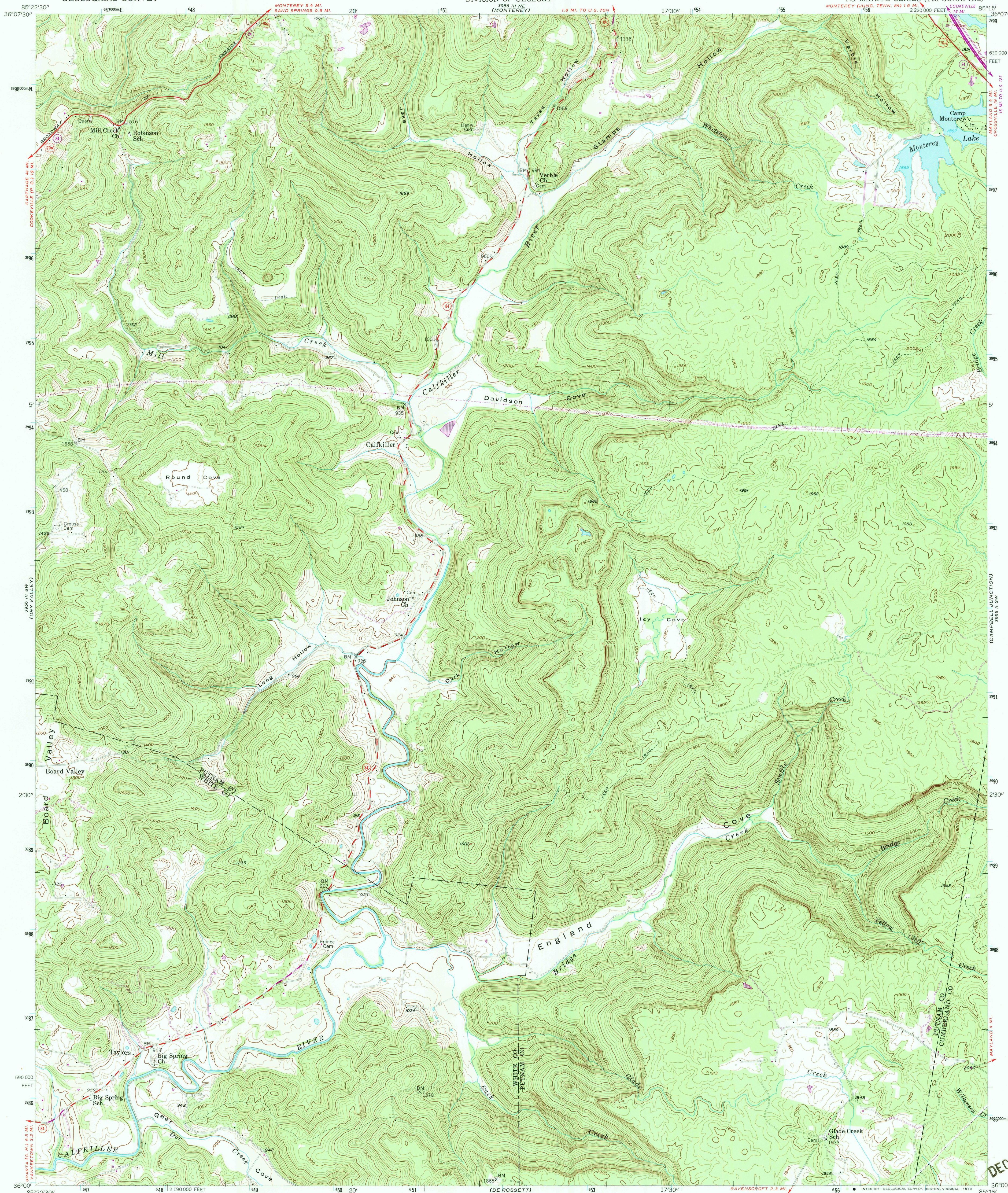
3956 III NW
(COCKEVILLE EAST)

UNITED STATES
DEPARTMENT OF THE INTERIOR
GEOLOGICAL SURVEY

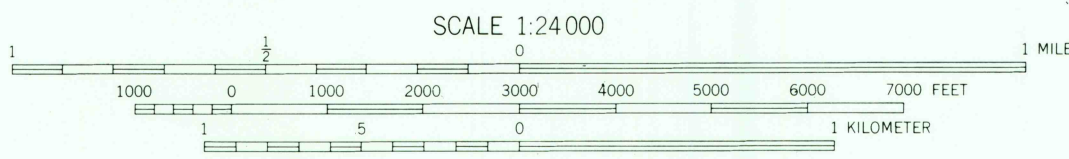
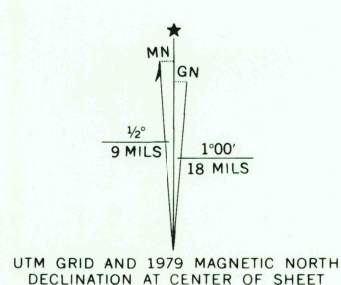
STATE OF TENNESSEE
DEPARTMENT OF CONSERVATION
DIVISION OF GEOLOGY

MONTEREY LAKE QUADRANGLE
TENNESSEE
7.5 MINUTE SERIES (TOPOGRAPHIC)

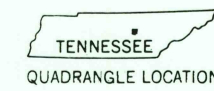
3956 III NW
(COCKEVILLE EAST)



Mapped, edited, and published by the Geological Survey
Control by USGS, and USC&GS
Topography from aerial photographs by photogrammetric methods.
Aerial photographs taken 1954. Field check 1955-56
Polyconic projection. 1927 North American datum
10,000-foot grid based on Tennessee coordinate system
1000-meter Universal Transverse Mercator grid ticks,
zone 16, shown in blue
Unchecked elevations are shown in brown
Revisions shown in purple and woodland compiled from
aerial photographs taken 1975 and other source data
This information not field checked. Map edited 1979



THIS MAP COMPLIES WITH NATIONAL MAP ACCURACY STANDARDS
FOR SALE BY U. S. GEOLOGICAL SURVEY, RESTON, VIRGINIA 22092.
TENNESSEE DIVISION OF GEOLOGY, NASHVILLE, TENN. 37219.
A FOLDER DESCRIBING TOPOGRAPHIC MAPS AND SYMBOLS IS AVAILABLE ON REQUEST



ROAD CLASSIFICATION
Heavy-duty ——— Light-duty ———
Medium-duty ——— Unimproved dirt ———
U. S. Route ——— State Route ———
Interstate Route ———

MONTEREY LAKE, TENN.
N 3600—W 8515/7.5
1956
PHOTOREVISED 1979
AMS 3956 III SE—SERIES V841

RETURN TO:
USGS AND HISTORICAL MAP ARCHIVES

DEC 13 1992
PLEASANT HILL
3956 III NW