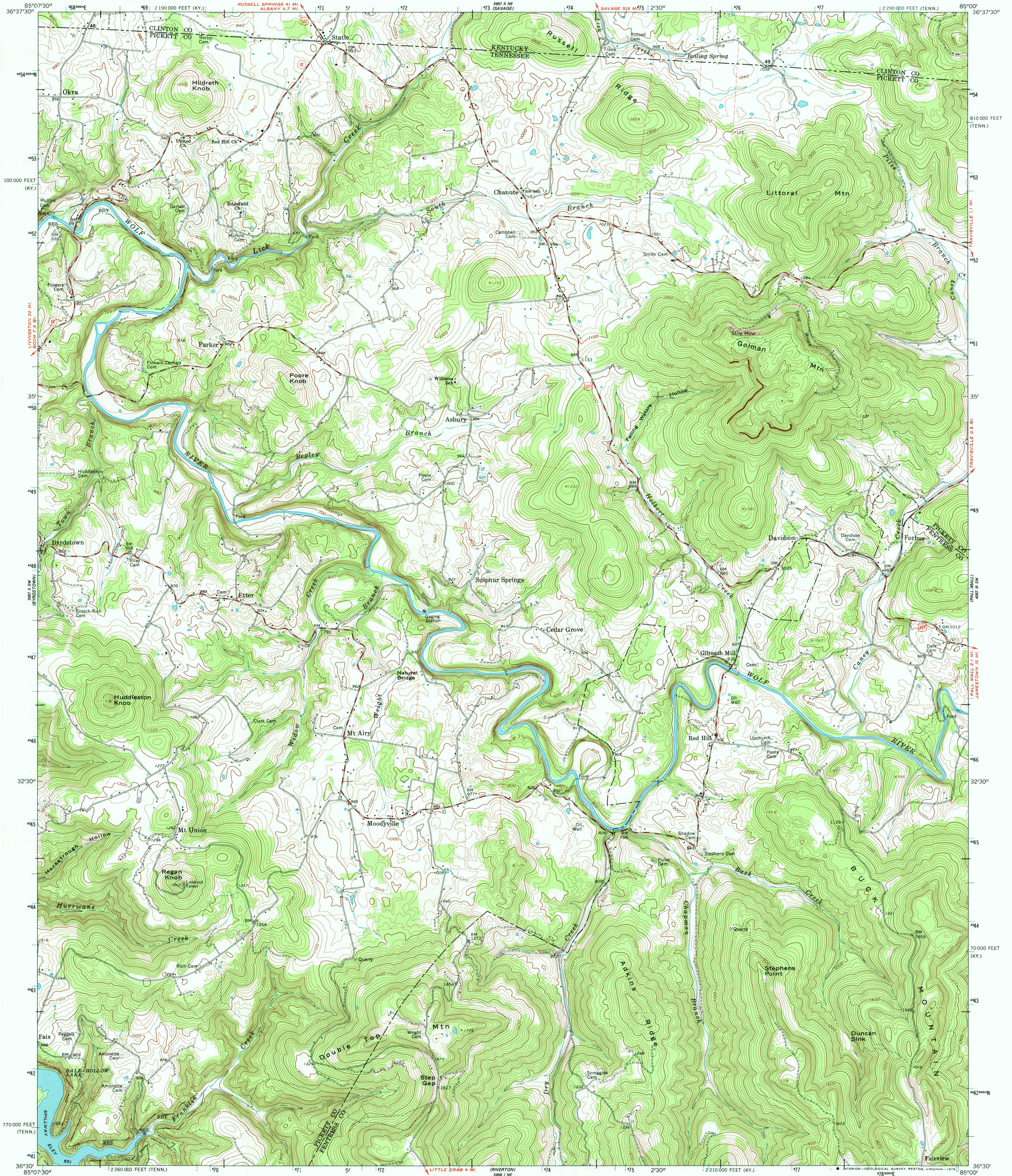


UNITED STATES  
DEPARTMENT OF THE INTERIOR  
GEOLOGICAL SURVEY

STATE OF TENNESSEE  
DEPARTMENT OF CONSERVATION

MOODYVILLE QUADRANGLE  
TENNESSEE-KENTUCKY  
7.5 MINUTE SERIES (TOPOGRAPHIC)  
SE 1/4 BYRDSTOWN 15' QUADRANGLE

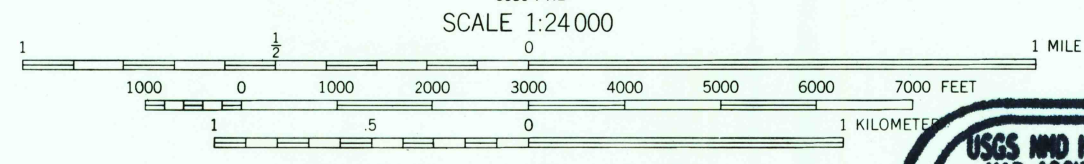
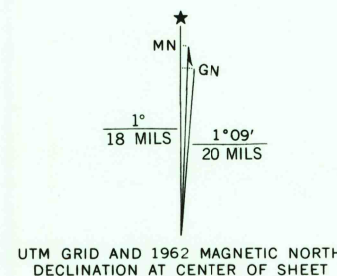


Mapped, edited, and published by the Geological Survey  
Control by USGS, USC&GS, and USCE

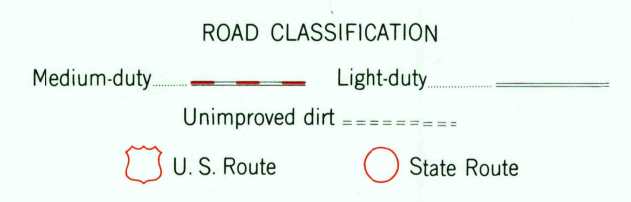
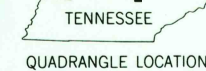
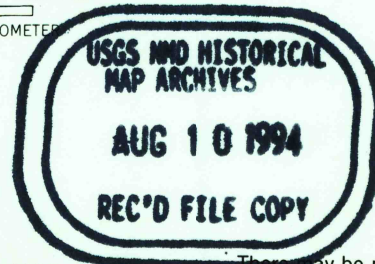
Topography in Kentucky by photogrammetric methods in cooperation with the Kentucky Geological Survey from aerial photographs taken 1951. Field checked 1954. Revised 1962  
Topography in Tennessee by photogrammetric methods from aerial photographs taken 1960. Field checked 1962

Polyconic projection. 1927 North American datum  
10,000-foot grid based on Tennessee coordinate system, and Kentucky coordinate system, south zone  
1000-meter Universal Transverse Mercator grid ticks, zone 16, shown in blue

Fine red dashed lines indicate selected fence and field lines where generally visible on aerial photographs. This information is unchecked  
Dale Hollow Reservoir subject to controlled inundation to 663 feet



THIS MAP COMPLIES WITH NATIONAL MAP ACCURACY STANDARDS FOR SALE BY U.S. GEOLOGICAL SURVEY, RESTON, VIRGINIA 22092 AND TENNESSEE DIVISION OF GEOLOGY, NASHVILLE, TENN. 37219 KENTUCKY GEOLOGICAL SURVEY, LEXINGTON, KENTUCKY 40506, AND KENTUCKY DEPARTMENT OF COMMERCE, FRANKFORT, KENTUCKY 40601 A FOLDER DESCRIBING TOPOGRAPHIC MAPS AND SYMBOLS IS AVAILABLE ON REQUEST



MOODYVILLE, TENN.-KY.  
SE 1/4 BYRDSTOWN 15' QUADRANGLE  
N 3630-W 8500/7.5

1962

AMS 3957 II SE-SERIES V841