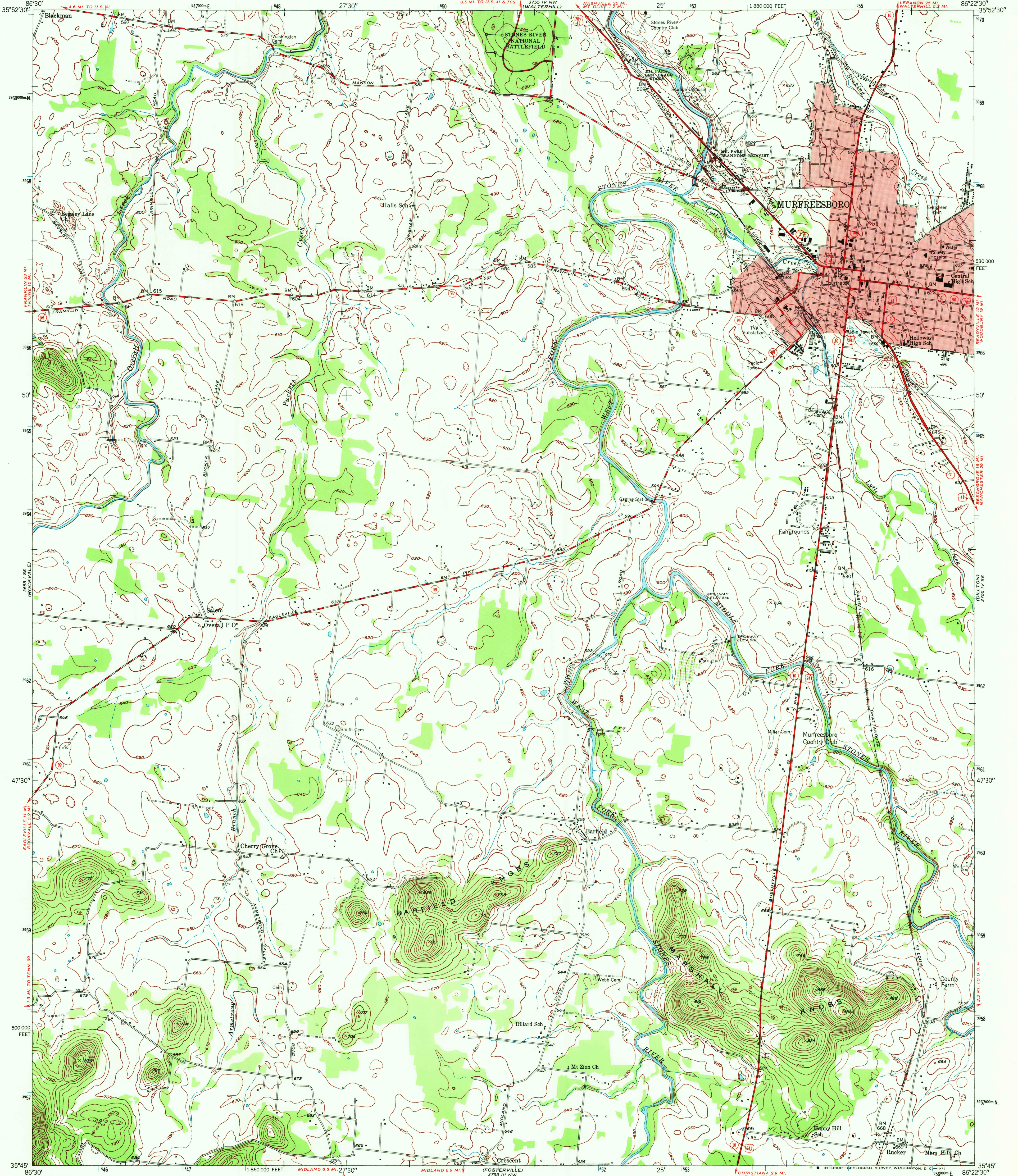


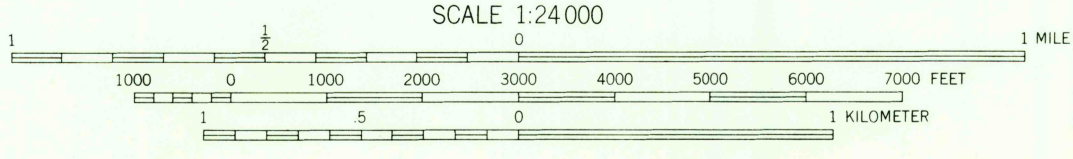
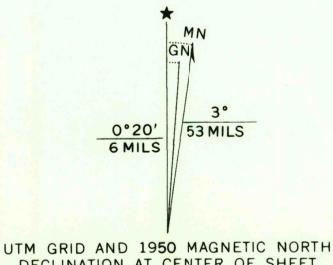
UNITED STATES  
DEPARTMENT OF THE INTERIOR  
GEOLOGICAL SURVEY

STATE OF TENNESSEE  
DEPARTMENT OF CONSERVATION  
DIVISION OF GEOLOGY

MURFREESBORO QUADRANGLE  
TENNESSEE-RUTHERFORD CO.  
7.5 MINUTE SERIES (TOPOGRAPHIC)  
SW 1/4 MURFREESBORO 15' QUADRANGLE



Mapped by the Geological Survey and the Corps of Engineers  
Edited and published by the Geological Survey  
Control by USGS, USC&GS, USCE, and TVA  
Culture and drainage in part compiled from aerial photographs  
Topography by multiplex methods from aerial photographs taken 1950  
and plane-table surveys 1950  
Polyconic projection. 1927 North American datum  
10,000-foot grid based on Tennessee coordinate system  
Red tint indicates area in which only  
landmark buildings are shown  
1000-meter Universal Transverse Mercator grid ticks,  
zone 16, shown in blue



CONTOUR INTERVAL 10 FEET  
DATUM IS MEAN SEA LEVEL

THIS MAP COMPLIES WITH NATIONAL MAP ACCURACY STANDARDS  
FOR SALE BY U. S. GEOLOGICAL SURVEY, WASHINGTON, D. C. 20242,  
AND TENNESSEE DIVISION OF GEOLOGY, NASHVILLE, TENNESSEE 37219  
A FOLDER DESCRIBING TOPOGRAPHIC MAPS AND SYMBOLS IS AVAILABLE ON REQUEST

ROAD CLASSIFICATION  
Heavy-duty ——— 2 LANE 16 LANE Light-duty ———  
Medium-duty ——— 4 LANE 16 LANE Unimproved dirt ———  
U. S. Route ——— State Route ———

MURFREESBORO, TENN.  
SW 1/4 MURFREESBORO 15' QUADRANGLE  
N3545—W8622 5/7.5

1950  
AMS 3755 IV SW—SERIES V841

USGS  
HISTORICAL FILE  
TOPOGRAPHIC DIVISION