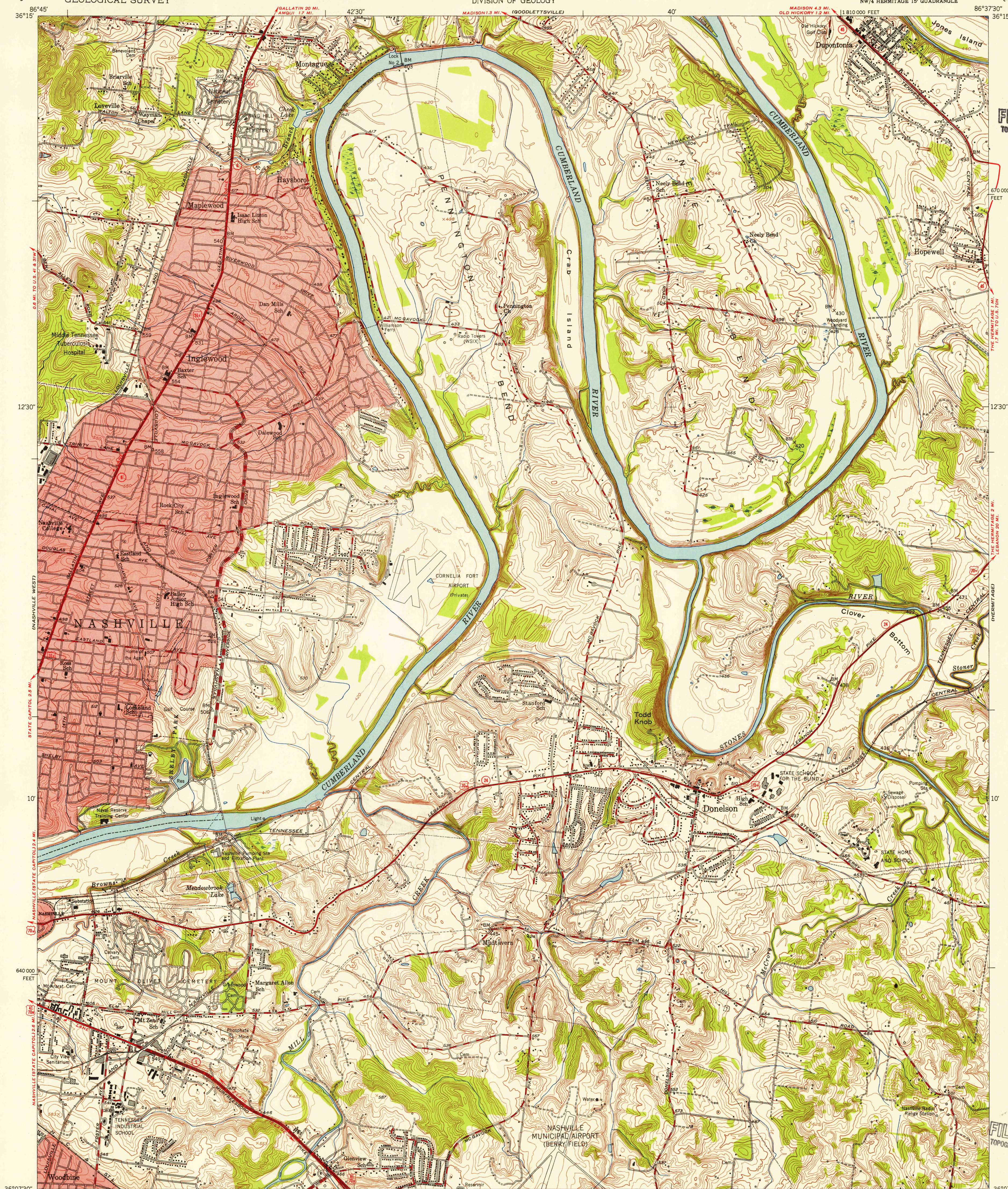


UNITED STATES  
DEPARTMENT OF THE INTERIOR  
GEOLOGICAL SURVEY

STATE OF TENNESSEE  
DEPARTMENT OF CONSERVATION  
DIVISION OF GEOLOGY

NASHVILLE EAST QUADRANGLE  
TENNESSEE—DAVIDSON CO.  
7.5 MINUTE SERIES (TOPOGRAPHIC)  
NW/4 HERMITAGE 15' QUADRANGLE

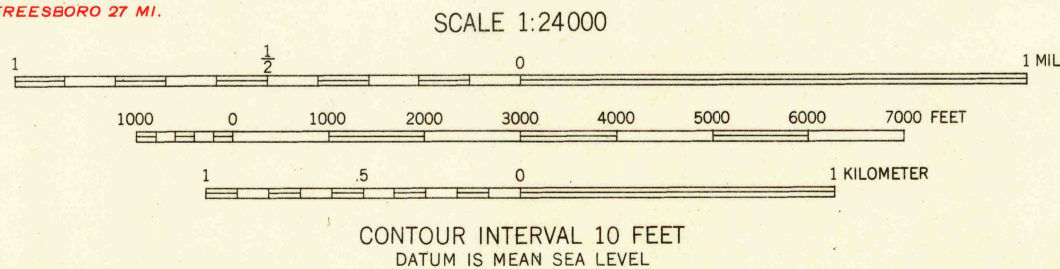


U.S.G.S.  
FILE COPY  
TOPOGRAPHIC DIVISION

U.S.G.S.  
FILE COPY  
TOPOGRAPHIC DIVISION

Maped, edited, and published by the Geological Survey  
Control by USGS, USC&GS, USCE, and Tennessee Geodetic Survey  
Topography from aerial photographs by multiplex methods  
and Corps of Engineers, U. S. Army  
Aerial photographs taken 1951. Field check 1952  
Polyconic projection. 1927 North American datum  
10,000-foot grid based on Tennessee coordinate system  
Red tint indicates areas in which only  
landmark buildings are shown

TRUE NORTH  
MAGNETIC NORTH  
APPROXIMATE MEAN  
DECLINATION, 1952



USGS  
HISTORICAL FILE  
TOPOGRAPHIC DIVISION

TENNESSEE  
QUADRANGLE LOCATION

ROAD CLASSIFICATION  
Heavy-duty ——— 4 LANE 16 LANE Light-duty ———  
Medium-duty ——— 4 LANE 16 LANE Unimproved dirt ———  
U. S. Route State Route

NASHVILLE EAST, TENN.  
NW/4 HERMITAGE 15' QUADRANGLE  
N3607.5—W8637.5/7.5  
1952

OCT 18 1954

4170