

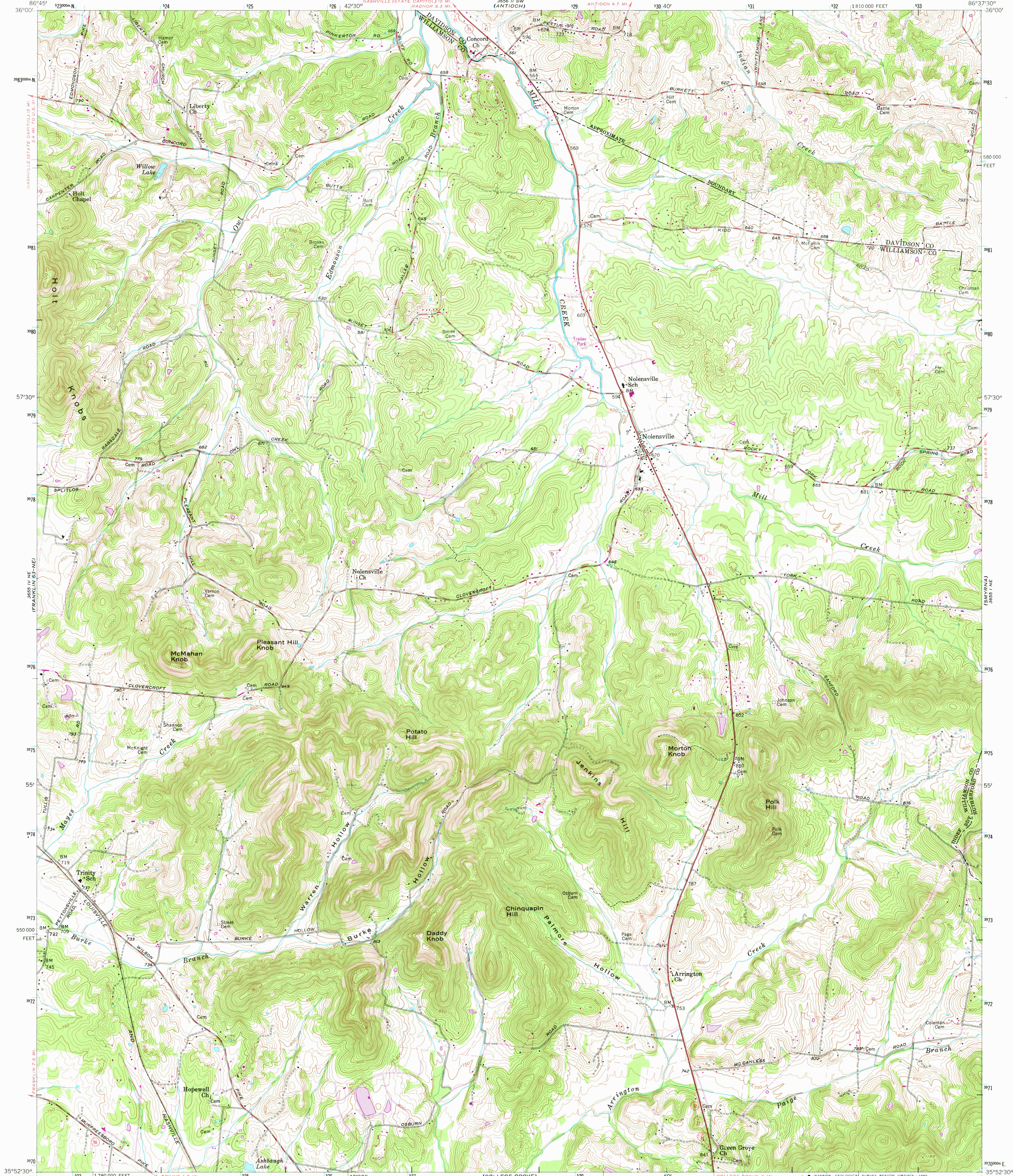
3550 11 SE
(OAK HILL)

UNITED STATES
DEPARTMENT OF THE INTERIOR
GEOLOGICAL SURVEY



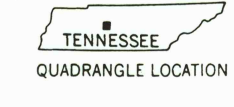
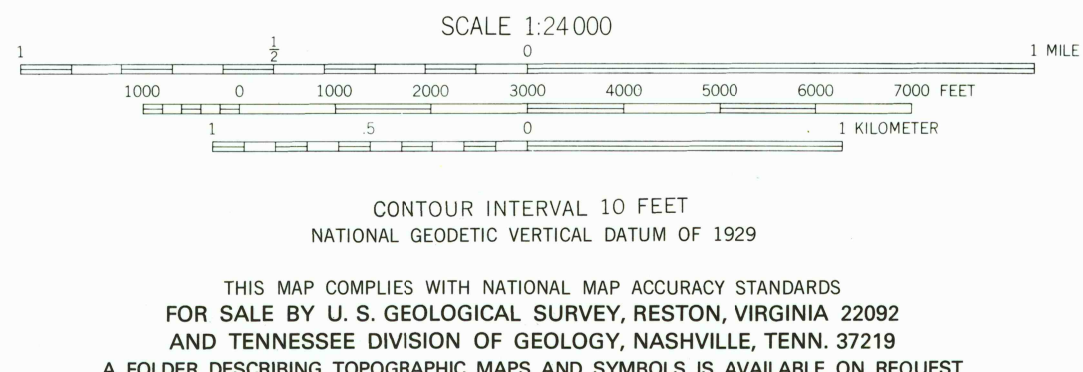
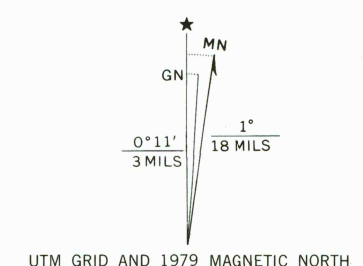
NOLANSVILLE QUADRANGLE
TENNESSEE
7.5 MINUTE SERIES (TOPOGRAPHIC)

3550 11 SE
(LA VERGNE)



(BETHESDA 67-SE)
3550 11 SE

Mapped, edited, and published by the Geological Survey
Control by USGS, USC&GS, and Tennessee Geodetic Survey
Topography from aerial photographs by photogrammetric methods
Aerial photographs taken 1951. Field check 1957
Polyconic projection. 1927 North American datum
10,000-foot grid based on Tennessee coordinate system
1000-meter Universal Transverse Mercator grid ticks,
zone 16, shown in blue
To place on the predicted North American Datum 1983
move the projection lines 6 meters south and
0 meters west as shown by dashed corner ticks
Fine red dashed lines indicate selected fence and field lines where
generally visible on aerial photographs. This information is unchecked
Revisions shown in purple compiled in cooperation with the
state of Tennessee from aerial photographs taken 1976 and other
source data. This information not field checked. Map edited 1979



ROAD CLASSIFICATION
Heavy-duty ——— Light-duty ———
Medium-duty ——— Unimproved dirt ———
U. S. Route ——— State Route ———

USGS
Historical File
Topographic Division

NOLANSVILLE, TENN.
N 3552.5—W 8637.5/7.5

1957
PHOTO REVISOR 1979
DMA 3555 1 NW—SERIES V841

MAY - 5 1980
2050

(RECEIVED)
3550 11 SE