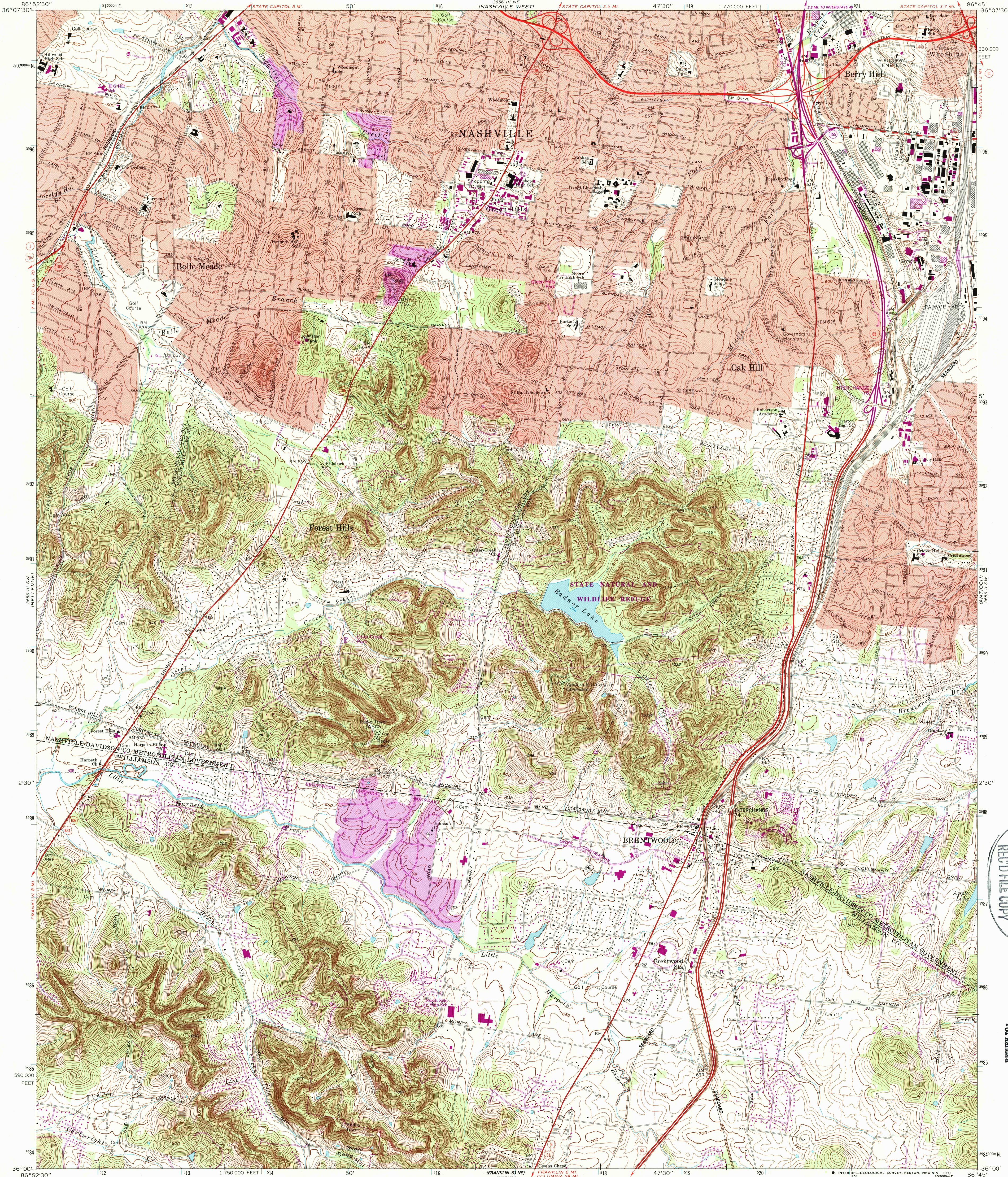


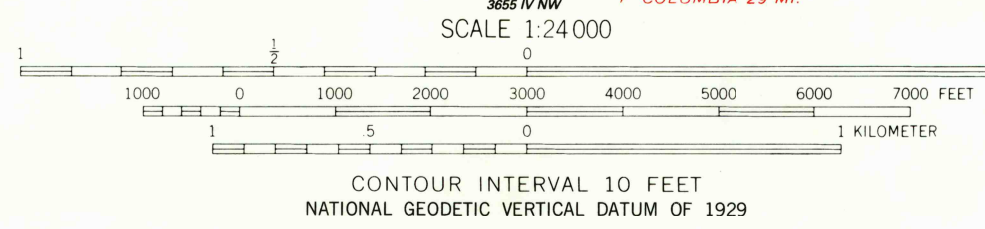
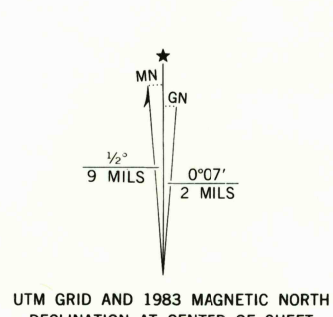
UNITED STATES
DEPARTMENT OF THE INTERIOR
GEOLOGICAL SURVEY

STATE OF TENNESSEE
DEPARTMENT OF CONSERVATION
DIVISION OF GEOLOGY

OAK HILL QUADRANGLE
TENNESSEE
7.5 MINUTE SERIES (TOPOGRAPHIC)



Mapped, edited, and published by the Geological Survey
Control by USGS, NOS/NOAA, and Tennessee Geodetic Survey
Topography by photogrammetric methods from aerial photographs
taken 1948 and 1949 and by the Army Map Service
Field checked 1952 and 1953. Revised from aerial photographs
taken 1967. Field checked 1968
Polyconic projection. 10,000-foot grid ticks based on Tennessee
coordinate system. 1000-meter Universal Transverse Mercator
grid ticks, zone 16, shown in blue. 1927 North American Datum
To place on the predicted North American Datum 1983 move the
projection lines 6 meters south as shown by dashed corner ticks
Fine red dashed lines indicate selected fence and field lines where
generally visible on aerial photographs. This information is unchecked
Red tint indicates areas in which only landmark buildings are shown
There may be private inholdings within the boundaries of
the National or State reservations shown on this map



RETURN TO:
USGS AND HISTORICAL MAP ARCHIVES



ROAD CLASSIFICATION
Primary highway, all weather, hard surface
Secondary highway, all weather, hard surface
Interstate Route
U. S. Route
State Route
Light-duty road, all weather, improved surface
Unimproved road, fair or dry weather
=====

THIS MAP COMPLIES WITH NATIONAL MAP ACCURACY STANDARDS
FOR SALE BY U. S. GEOLOGICAL SURVEY, DENVER, COLORADO, 80225, OR RESTON, VIRGINIA 22092
AND TENNESSEE DEPARTMENT OF CONSERVATION, DIVISION OF GEOLOGY NASHVILLE, TENN. 37219
A FOLDER DESCRIBING TOPOGRAPHIC MAPS AND SYMBOLS IS AVAILABLE ON REQUEST

Revisions shown in purple and woodland compiled from
aerial photographs taken 1981 and other sources
This information not field checked. Map edited 1983
Purple tint indicates extension of urban areas

OAK HILL, TENN.
36086-47-TF-024

1968
PHOTOREVISED 1983
DMA 5656 III SE--SERIES V841

USGS AND HISTORICAL MAP ARCHIVES
MAY 17 1989
REC'D FILE COPY

SEARCHED FOR TOPOGRAPHIC MAPS
RETURN TO: 00. RETURN