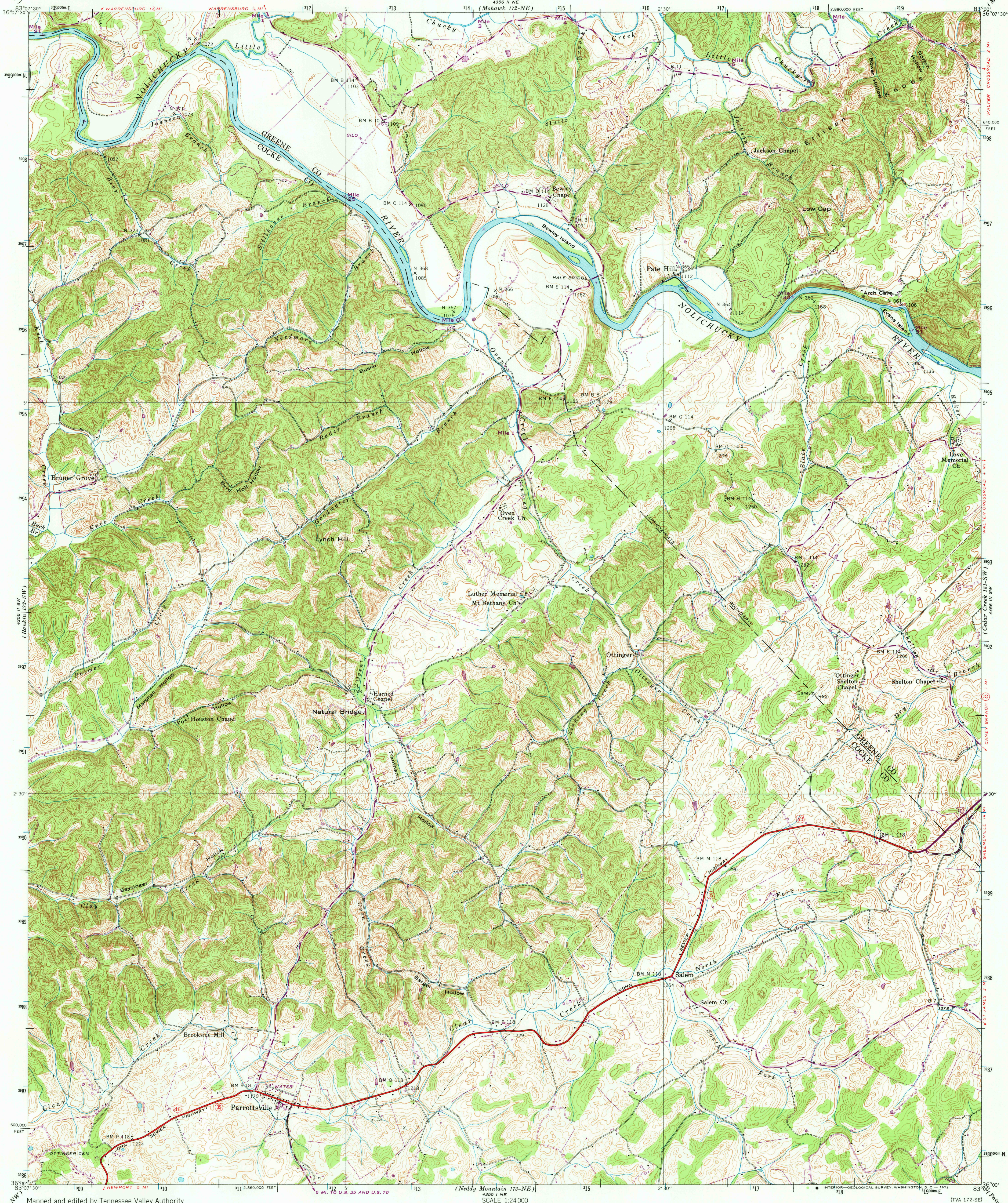


UNITED STATES
DEPARTMENT OF THE INTERIOR
GEOLOGICAL SURVEY

UNITED STATES
TENNESSEE VALLEY AUTHORITY
MAPS AND SURVEYS BRANCH

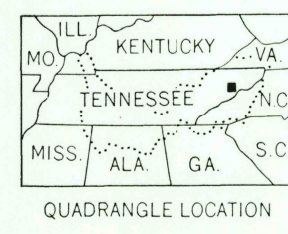
PARROTTVILLE QUADRANGLE
TENNESSEE
7.5 MINUTE SERIES (TOPOGRAPHIC) 172-SE



Mapped and edited by Tennessee Valley Authority
Published by the Geological Survey
Control by USGS, USGS, and TVA
Topography by USGS by photogrammetric methods
Map field checked by TVA, 1939
Polyconic projection, 1927 North American datum
10,000-foot grid based on Tennessee rectangular
coordinate system
1000 meter Universal Transverse Mercator Grid ticks,
Zone 17, shown in blue
Revisions shown in purple and recomposition of woodland
areas compiled by the Tennessee Valley Authority from aerial
photographs taken 1971. This information not field checked
Fine purple dashed lines indicate selected fence and field lines
visible on aerial photography. This information is unchecked

UTM GRID AND 1971 MAGNETIC NORTH
DECLINATION AT CENTER OF SHEET

SCALE 1:24,000
CONTOUR INTERVAL 20 FEET
DASHED LINES REPRESENT HALF-INTERVAL CONTOURS
DATUM IS MEAN SEA LEVEL



ROAD CLASSIFICATION
Heavy-duty Poor motor road
Medium-duty Wagon and jeep track
Light-duty Foot trail
In developed areas, only through roads are classified

PARROTTVILLE, TENN.
N3600-W8300/7.5
1939
PHOTOREVISED 1971
AMS 4356 II SE-SERIES 9841

2220
No Plan
FEB 16 1973