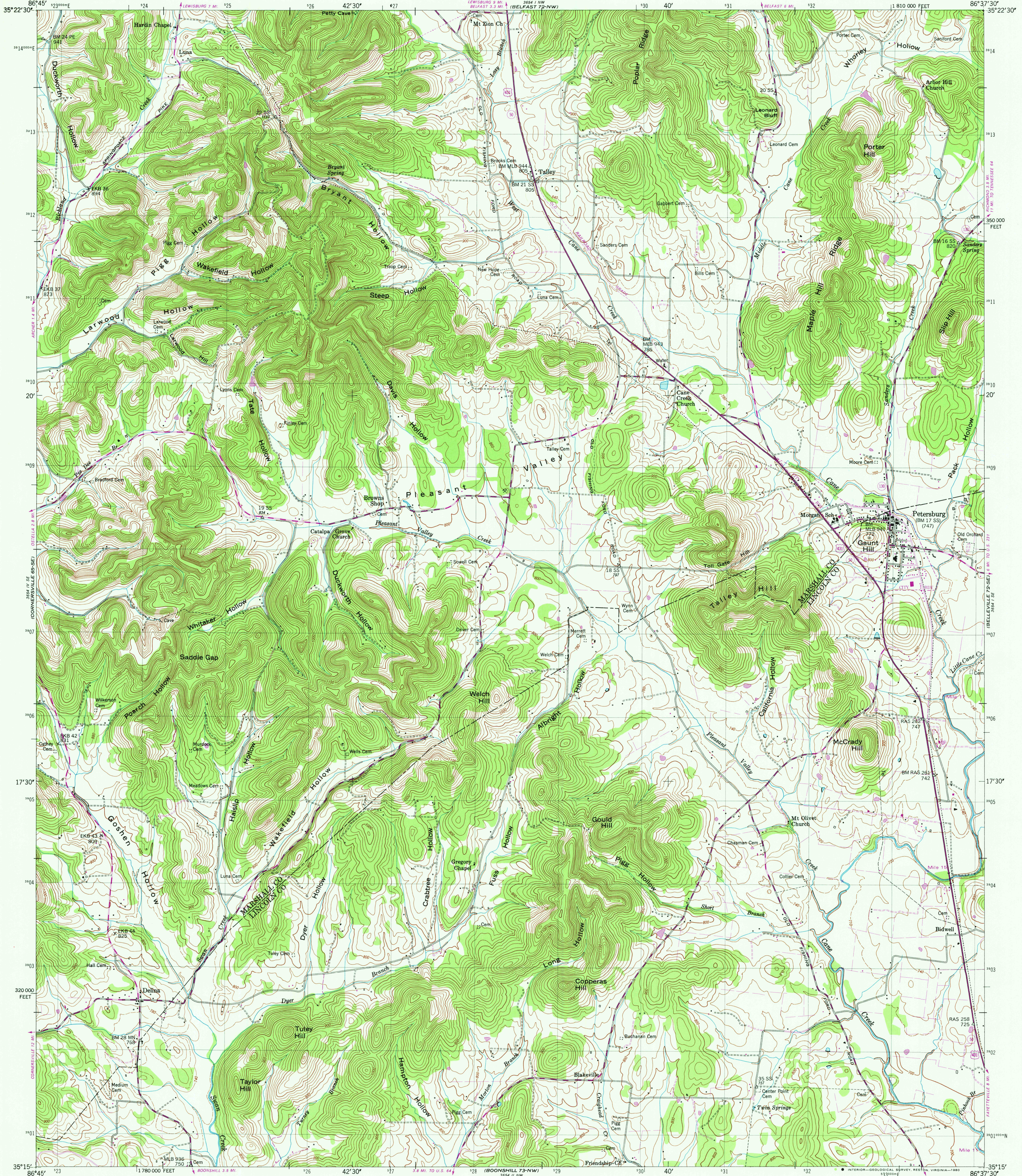


UNITED STATES
DEPARTMENT OF THE INTERIOR
GEOLOGICAL SURVEY

UNITED STATES
TENNESSEE VALLEY AUTHORITY
MAPPING SERVICES BRANCH

PETERSBURG QUADRANGLE
TENNESSEE
7.5 MINUTE SERIES (TOPOGRAPHIC) 72-SW



Mapped and edited by Tennessee Valley Authority
Published by the Geological Survey

Control by NOS/NOAA, USGS, and TVA

Topography by USGS and TVA by photogrammetric methods using aerial
photographs taken 1947. Map field checked by TVA, 1949

Polyconic projection

10,000-foot grid based on Tennessee rectangular
coordinate system

1000-meter Universal Transverse Mercator grid, zone 16

1927 North American Datum

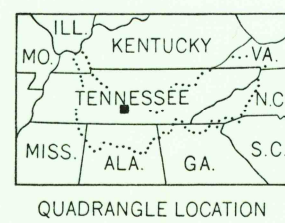
To place on the predicted North American Datum 1983
move the projection lines 7 meters south and
1 meter west as shown by dashed corner ticks

Fine purple dashed lines indicate selected fence and field lines
visible on aerial photographs. This information is unchecked

Revisions shown in purple and woodland compiled by
the Tennessee Valley Authority from aerial photographs
taken 1979 and other source data. This information
not field checked. Map edited 1980

SCALE 1:24 000
CONTOUR INTERVAL 20 FEET
DASHED LINES REPRESENT HALF INTERVAL CONTOURS
NATIONAL GEODETIC VERTICAL DATUM OF 1929

THIS MAP COMPLIES WITH NATIONAL MAP ACCURACY STANDARDS
FOR SALE BY U.S. GEOLOGICAL SURVEY, RESTON, VIRGINIA 22092
TENNESSEE DIVISION OF GEOLOGY, NASHVILLE, TENN. 37219
U.S. TENNESSEE VALLEY AUTHORITY, CHATTANOOGA, TENN. 37401 OR KNOXVILLE, TENN. 37902
A FOLDER DESCRIBING TOPOGRAPHIC MAPS AND SYMBOLS IS AVAILABLE ON REQUEST



ROAD CLASSIFICATION
Primary highway, all weather, hard surface
Secondary highway, all weather, hard surface
Light-duty road, all weather, improved surface
Unimproved road, fair or dry weather
Interstate Route
U. S. Route
State Route

PETERSBURG, TENN.
N3515-W8637.5/7.5

1951
PHOTOREVISED 1980
DMA 3654 1 SW-SERIES 5841

JAN 29 1981
1950