

LEASWOOD 12-SW
SELMER 14 MI
ADAMSVILLE 1.0 MI
STANTONVILLE 13-NW
MC NARY CO
HARDIN CO
12 MI. TO U.S. 45
STANTONVILLE 3.0 MI
TULU 5.1 MI
CORINTH 19 MI
MOORE 13-SW

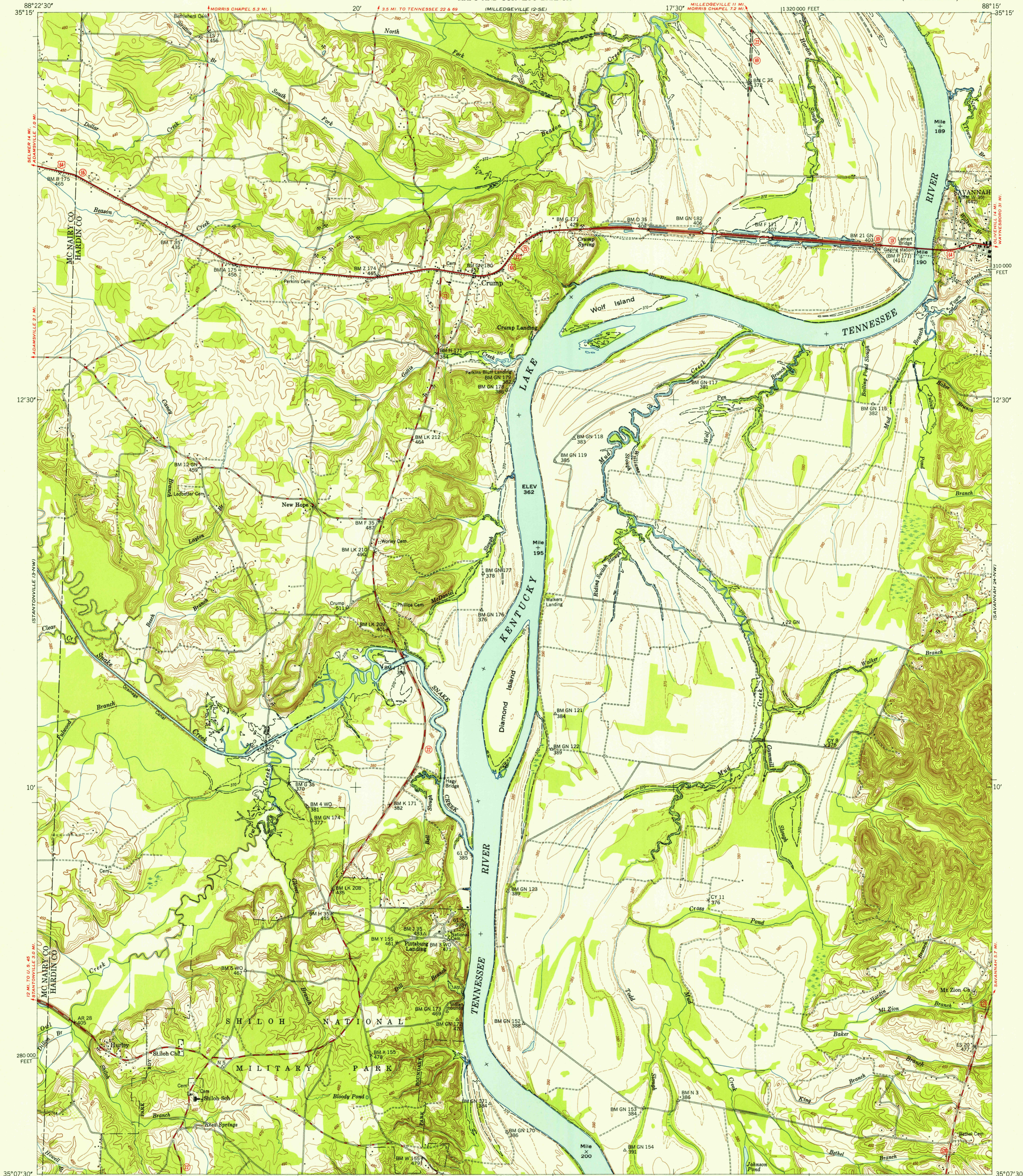
UNITED STATES
DEPARTMENT OF THE INTERIOR
GEOLOGICAL SURVEY

U. S. G. S.
FILE COPY
Inspection and Editing

UNITED STATES
TENNESSEE VALLEY AUTHORITY
MAPS AND SURVEYS BRANCH

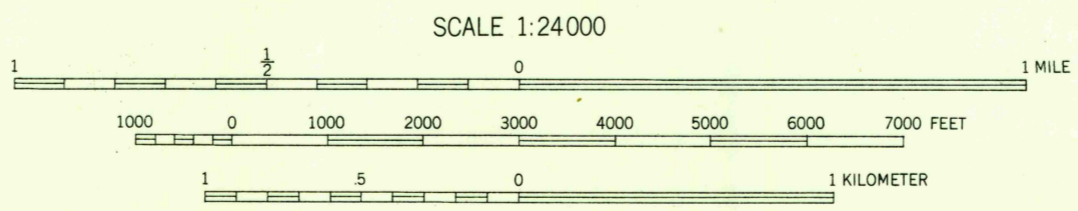
PITTSBURG LANDING QUADRANGLE
TENNESSEE
7.5 MINUTE SERIES (TOPOGRAPHIC) 13-NE

HOOKERS BEND 22-SW
SAVANNAH 24-NW
PICKWICK VILLAGE 24-SW
PICKWICK VILLAGE 24-SW



Maped and edited by Tennessee Valley Authority
Published by the Geological Survey
Control by USC&GS, USGS, and TVA
Topography by USGS and TVA by multiplex and planetable
methods from aerial photographs taken 1947.
Field examination by TVA, 1949
Polyconic projection. 1927 North American datum
10,000-foot grid based on Tennessee rectangular
coordinate system
— indicates Kentucky Lake Easement Boundary

TRUE NORTH
MAGNETIC NORTH
APPROXIMATE MEAN
DECLINATION 1949



CONTOUR INTERVAL 10 FEET
DASHED LINES REPRESENT HALF-INTERVAL CONTOURS
DATUM IS MEAN SEA LEVEL
THIS MAP COMPLIES WITH NATIONAL MAP ACCURACY STANDARDS
FOR SALE BY U. S. GEOLOGICAL SURVEY, WASHINGTON 25, D. C.
TENNESSEE DIVISION OF GEOLOGY, NASHVILLE, TENNESSEE
U. S. TENNESSEE VALLEY AUTHORITY, CHATTANOOGA OR KNOXVILLE, TENN.
A FOLDER DESCRIBING TOPOGRAPHIC MAPS AND SYMBOLS IS AVAILABLE ON REQUEST

USGS
HISTORICAL FILE
TOPOGRAPHIC DIVISION

ROAD CLASSIFICATION
In developed areas, only through roads are classified
HARD-SURFACE ALL WEATHER ROADS DRY WEATHER ROADS
Heavy-duty ——— 4 LANE 6 LANE Improved dirt
Medium-duty ——— 4 LANE 6 LANE Unimproved dirt
Loose-surface, graded, or narrow hard-surface
⑧ U. S. Route ② State Route

PITTSBURG LANDING, TENN.
N3507.5-W8815/7.5

1949

OCT 27 1952

U. S. G. S.
FILE COPY
Inspection and Editing

2190