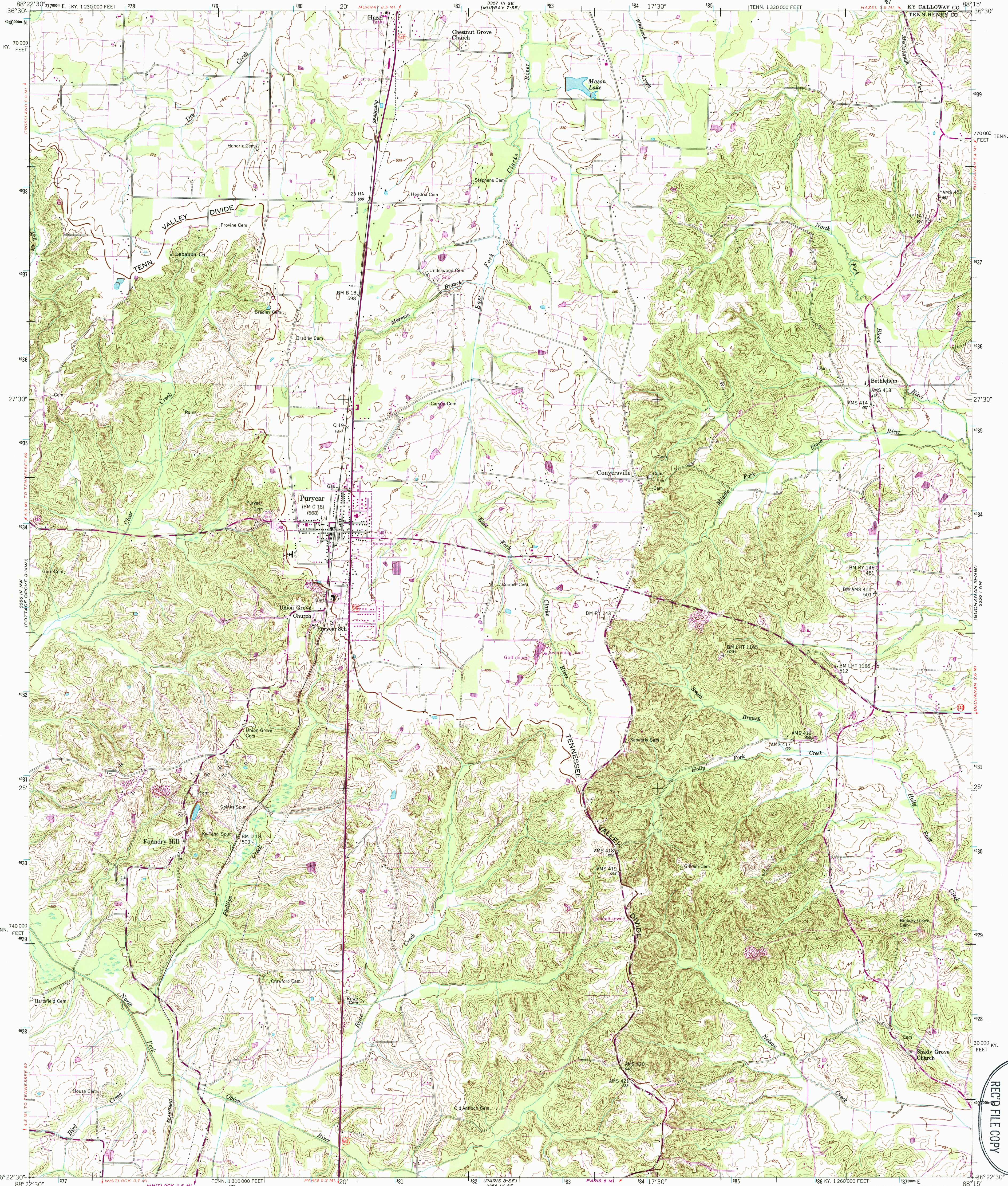


UNITED STATES
DEPARTMENT OF THE INTERIOR
GEOLOGICAL SURVEY

UNITED STATES
TENNESSEE VALLEY AUTHORITY
MAPS AND SURVEYS BRANCH

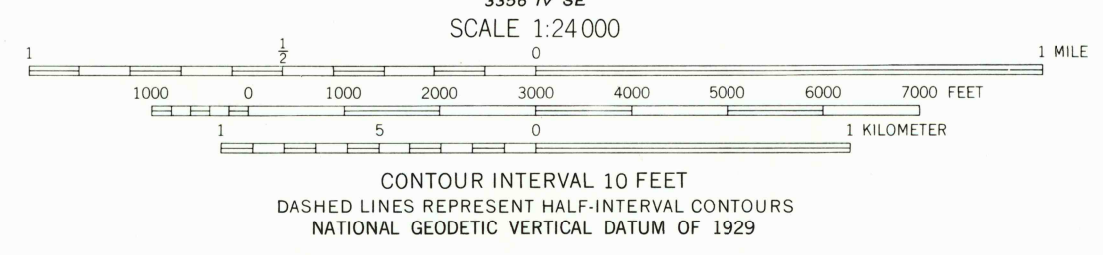
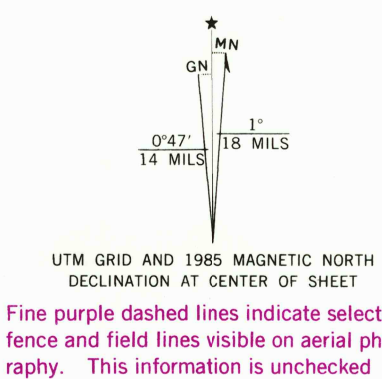
PURYEAR QUADRANGLE
TENNESSEE-KENTUCKY
7.5 MINUTE SERIES (TOPOGRAPHIC) 8-NE



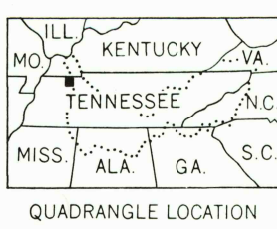
Mapped and edited by Tennessee Valley Authority
Published by the Geological Survey

Control by NOS/NOAA, USGS, and Tennessee Valley Authority
Topography by USGS and TVA by photogrammetric
methods from aerial photographs taken 1948
Map field checked by TVA, 1950

Polyconic projection. 10,000-foot grid ticks based on
Tennessee and Kentucky (South) coordinate systems
1000-meter Universal Transverse Mercator grid ticks,
zone 16, shown in blue
1927 North American Datum
To place on the predicted North American Datum 1983
move the projection lines 5 meters south and
4 meters east as shown by dashed corner ticks



THIS MAP COMPLIES WITH NATIONAL MAP ACCURACY STANDARDS
FOR SALE BY U. S. GEOLOGICAL SURVEY, RESTON, VIRGINIA 22092,
TENNESSEE VALLEY AUTHORITY, CHATTANOOGA, TENN. 37401 OR KNOXVILLE, TENN. 37902
U. S. TENNESSEE VALLEY AUTHORITY, CHATTANOOGA, TENN. 37401
AND KENTUCKY DEPARTMENT OF COMMERCE, FRANKFORT, KENTUCKY 40601
A FOLDER DESCRIBING TOPOGRAPHIC MAPS AND SYMBOLS IS AVAILABLE ON REQUEST



ROAD CLASSIFICATION
Heavy-duty Poor motor road
Medium-duty Wagon and jeep track
Light-duty Foot trail
U. S. Route State Route

PURYEAR, TENN. - KY.
36088-D3-TF-024

1950
PHOTOREVISED 1985
DMA 3556 IV NE - SERIES V841

RECD
FILE COPY
MAR 28 1986
USGS MND HISTORICAL MAPS