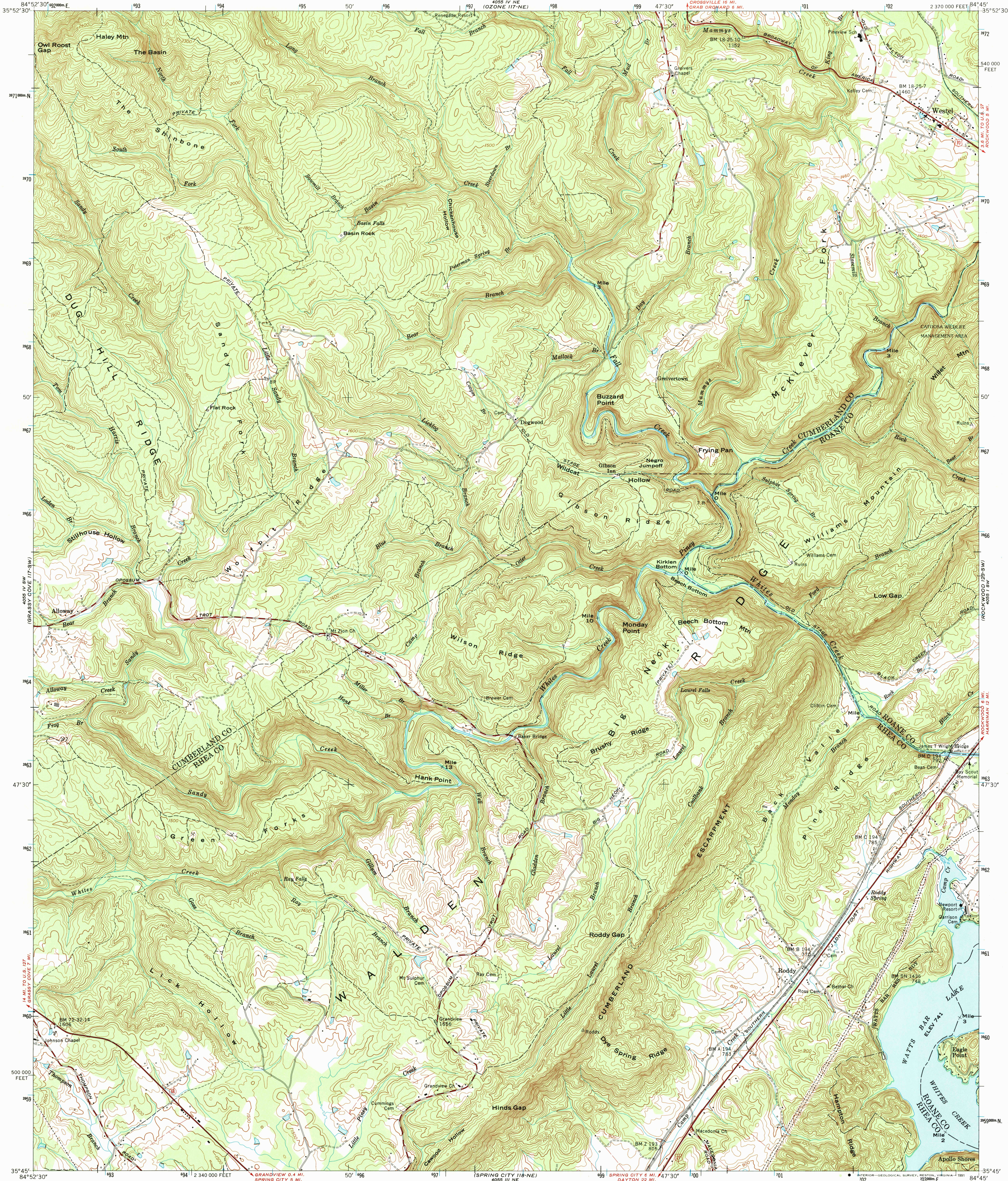


UNITED STATES
DEPARTMENT OF THE INTERIOR
GEOLOGICAL SURVEY

UNITED STATES
TENNESSEE VALLEY AUTHORITY
MAPS AND SURVEYS BRANCH

RODDY QUADRANGLE
TENNESSEE
7.5 MINUTE SERIES (TOPOGRAPHIC) 117-SE



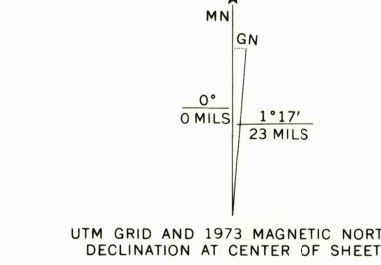
Mapped and edited by Tennessee Valley Authority
Published by the Geological Survey

Control by USC&GS, USGS, WPA, and TVA

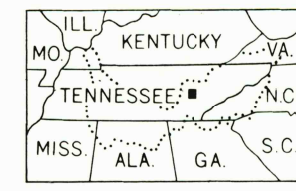
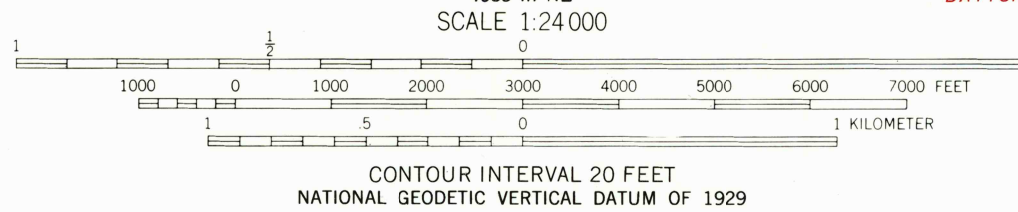
Revised by TVA in 1973 by photogrammetric methods using
aerial photographs taken 1973 and by reference to TVA-USGS
quadrangle dated 1946. Map field checked by TVA, 1973

Polyconic projection. 1927 North American datum
10,000-foot grid based on Tennessee rectangular
coordinate system
1000 meter Universal Transverse Mercator Grid ticks,
Zone 16, shown in blue

Fine red dashed lines indicate selected fence and field lines
visible on aerial photography. This information is unchecked



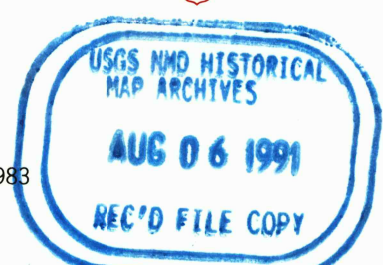
Map photoinspected 1976
No major culture or drainage changes observed



QUADRANGLE LOCATION

To place on the predicted North American Datum 1983
move the projection lines 6 meters south and
5 meters west as shown by dashed corner ticks

ROAD CLASSIFICATION	
Heavy-duty	Poor motor road
Medium-duty	Wagon and jeep track
Light-duty	Foot trail
U. S. Route	State Route



RODDY, TENN.
35084-G7-1F-024

1973
PHOTOINSPECTED 1976
DMA 4055 IV SE-SERIES V841