

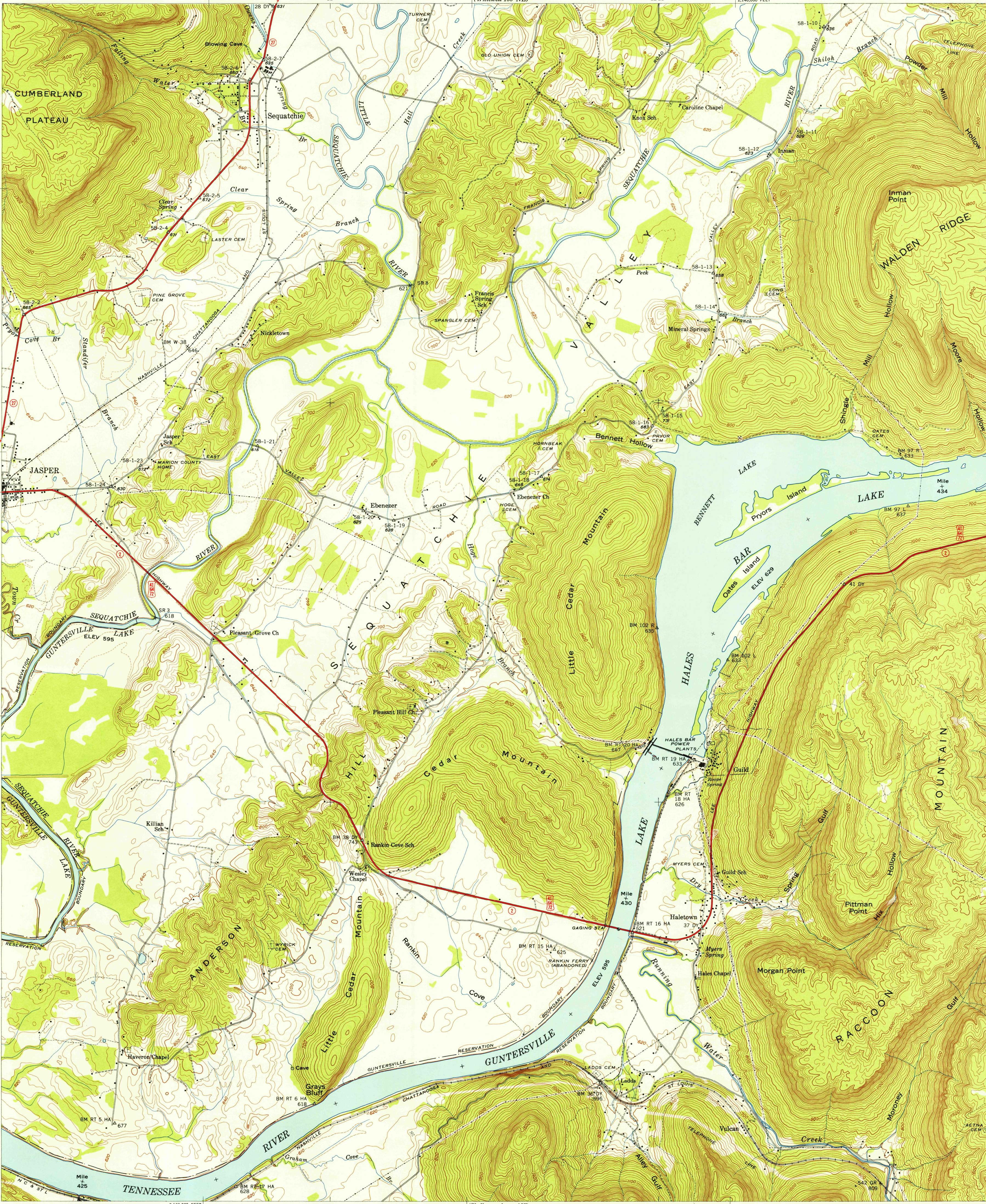
(White City 100-NW)  
(South Pittsburg 100-SW)  
(Nashville 100-SW)  
(Bridgeport 100-NW)

UNITED STATES  
DEPARTMENT OF THE INTERIOR  
GEOLOGICAL SURVEY

UNITED STATES  
TENNESSEE VALLEY AUTHORITY  
MAPS AND SURVEYS DIVISION

TENNESSEE  
(MARION COUNTY)  
SEQUATCHIE QUADRANGLE  
100-SE

(Keweenaw 100-NW)  
(Chattanooga 100-SE)  
(Wauhatchie 100-SW)  
(Hickory 100-NW)



Control by US&GS, USGS, TVA, and WPA  
Topography by Geological Survey from aerial  
photographs by stereophotogrammetric methods  
Field examination by Tennessee Valley Authority, 1942

24°  
TRUE NORTH  
MAGNETIC NORTH  
APPROXIMATE MEAN  
DECLINATION, 1943

Scale 21,000  
1:21,000  
Miles  
Kilometers

Contour interval 20 feet  
Occasional 10 foot contours shown by broken lines  
Datum is mean sea level

FOR SALE BY U. S. GEOLOGICAL SURVEY, WASHINGTON 25, D. C.  
AND U. S. TENNESSEE VALLEY AUTHORITY, CHATTANOOGA OR KNOXVILLE, TENN.  
A FOLDER DESCRIBING TOPOGRAPHIC MAPS AND SYMBOLS IS AVAILABLE ON REQUEST

USGS  
HISTORICAL FILE  
TOPOGRAPHIC DIVISION

U.S.G.S.  
FILE COPY  
TOPOGRAPHIC DIVISION

Reproduced by the U.S. Coast and Geodetic Survey 1957  
Polyconic projection, 1927 North American datum  
10,000 foot grid based on Tennessee  
rectangular coordinate system

ROUTES USUALLY TRAVELED  
HARD IMPERVIOUS SURFACES  
OTHER SURFACE IMPROVEMENTS  
① U.S. ROUTE ② STATE ROUTE

SEQUATCHIE, TENN.  
100-SE  
N3500-W8530/7.5  
1942

JUL 11 1957  
Commence  
1460