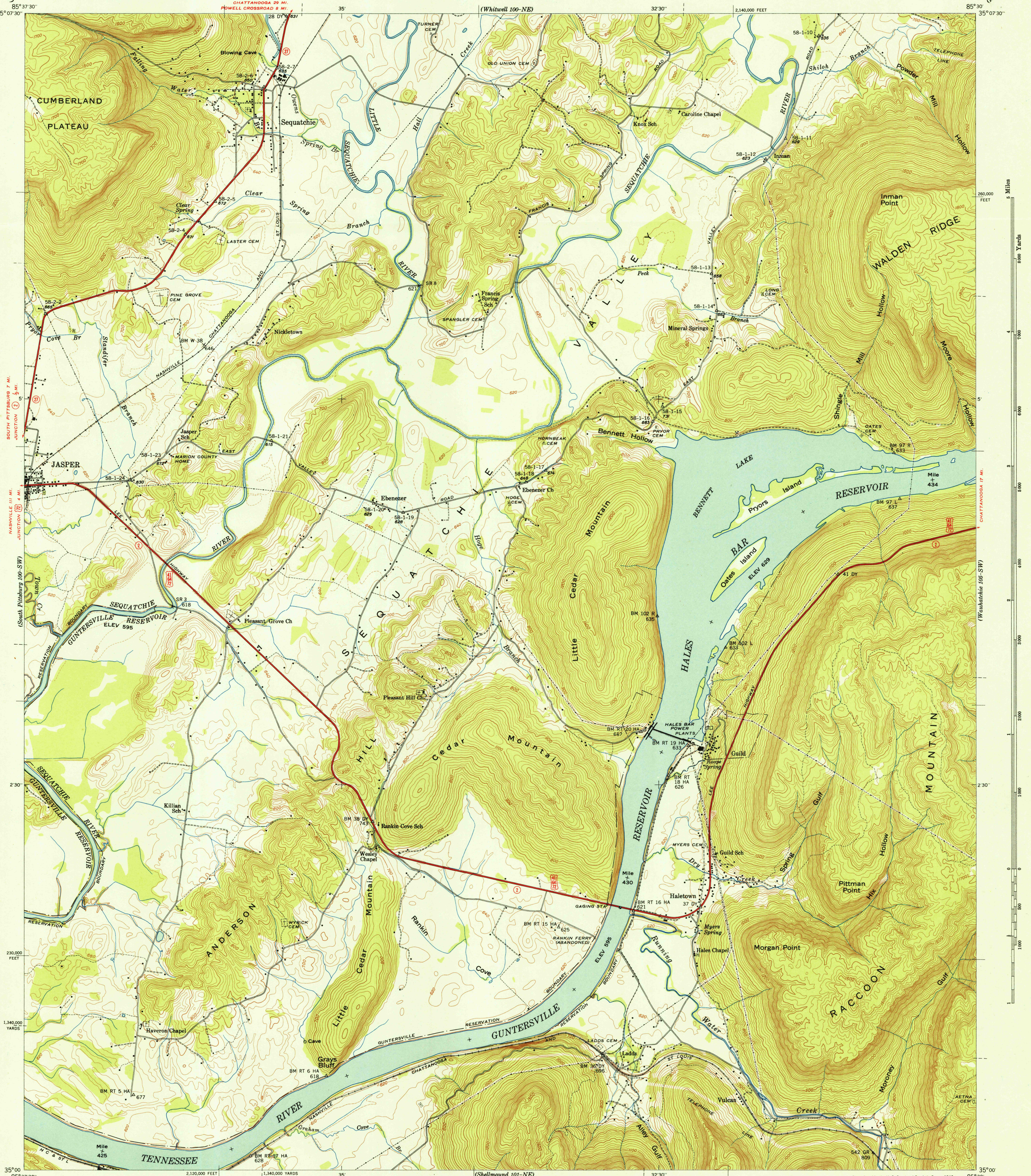


UNITED STATES
DEPARTMENT OF THE INTERIOR
GEOLOGICAL SURVEY

U. S. G. S.
FILE COPY
Illustration and Printing

UNITED STATES
TENNESSEE VALLEY AUTHORITY
MAPS AND SURVEYS DIVISION

TENNESSEE
(MARION COUNTY)
SEQUATCHIE QUADRANGLE
100-SE



Control by USC&GS, USGS, TVA, and WPA.
Topography by Geological Survey from aerial
photographs by stereophotogrammetric methods.
Field examination by Tennessee Valley Authority, 1942.

Maps distributed by the Geological Survey

TRUE NORTH
MAGNETIC NORTH
APPROXIMATE MEAN
DECLINATION, 1943

Scale 24,000
1 inch = 2 miles
1 centimeter = 200 meters

Contour interval 20 feet
Occasional 10 foot contours shown by broken lines
Datum is mean sea level

USGS & S.
HISTORICAL FILE
TOPOGRAPHIC DIVISION

Polyconic projection. 1927 North American datum
10,000 foot grid based on Tennessee
rectangular coordinate system
5,000 yard grid based on U. S. zone system, C

ROUTES USUALLY TRAVELED
HARD IMPERVIOUS SURFACES
OTHER SURFACE IMPROVEMENTS
U. S. ROUTE STATE ROUTE

SEQUATCHIE, TENN.
100-SE
Edition of 1943

N3500-W8530/7.5

DEC 6 - 1946