

(McMinnville 1:125,000)

U.S.G.S.
FILE COPY
Inspection and Editing.

(Sevierville 1:125,000)

UNITED STATES
DEPARTMENT OF THE INTERIOR
GEOLOGICAL SURVEY

UNITED STATES
TENNESSEE VALLEY AUTHORITY
MAPS AND SURVEYS DIVISION

U.S.G.S.
FILE COPY
Inspection and Editing.

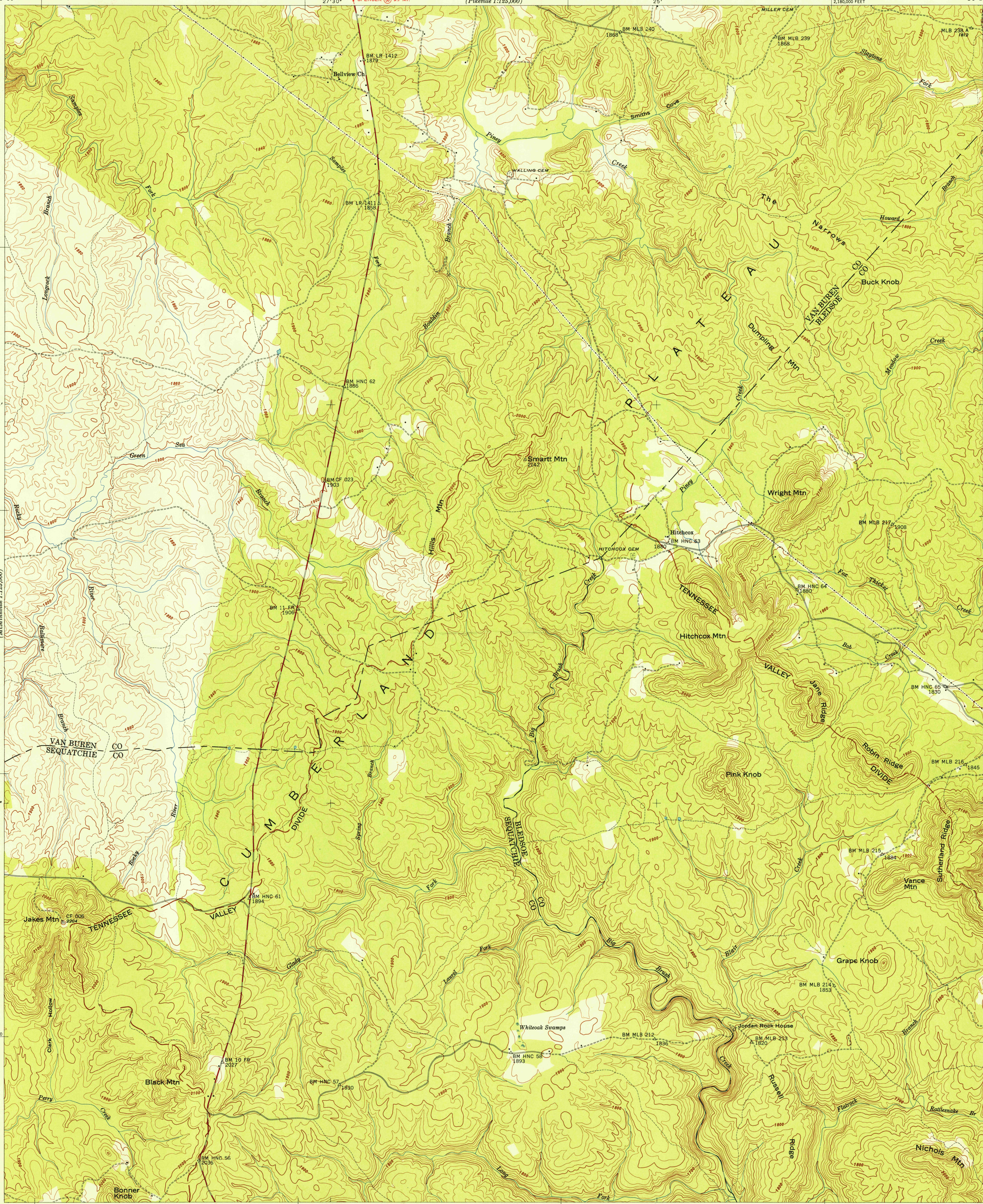
TENNESSEE
SMARTT MOUNTAIN QUADRANGLE
103-SW

(Pikeville 1:125,000)

U.S.G.S.
FILE COPY
Inspection and Editing.

(Brackley 100-SE)

(Mount Airy 104-NE)



Control by USCGS, USGS, USED, and TVA
Topography by USGS and TVA from aerial
photographs by stereophotogrammetric methods
Field examination by Tennessee Valley Authority, 1946
Maps distributed by the Geological Survey

APPROXIMATE MEAN
DECLINATION, 1947

Scale 24,000
1 inch = 2 miles
1 centimeter = 200 meters

Contour interval 20 feet
Datum is mean sea level

U.S.G.S.
FILE COPY
Inspection and Editing.

Reproduced by the U. S. Coast and Geodetic Survey 1948
Polyconic projection. 1927 North American datum
10,000 foot grid based on Tennessee
rectangular coordinate system
ROUTES USUALLY TRAVELED
HARD, IMPERVIOUS SURFACES
OTHER SURFACE IMPROVEMENTS
U.S. ROUTE
STATE ROUTE
SMARTT MOUNTAIN, TENN.
103-SW
Edition of 1947
N3530-W8522.5/7.5

MAY 14 1948