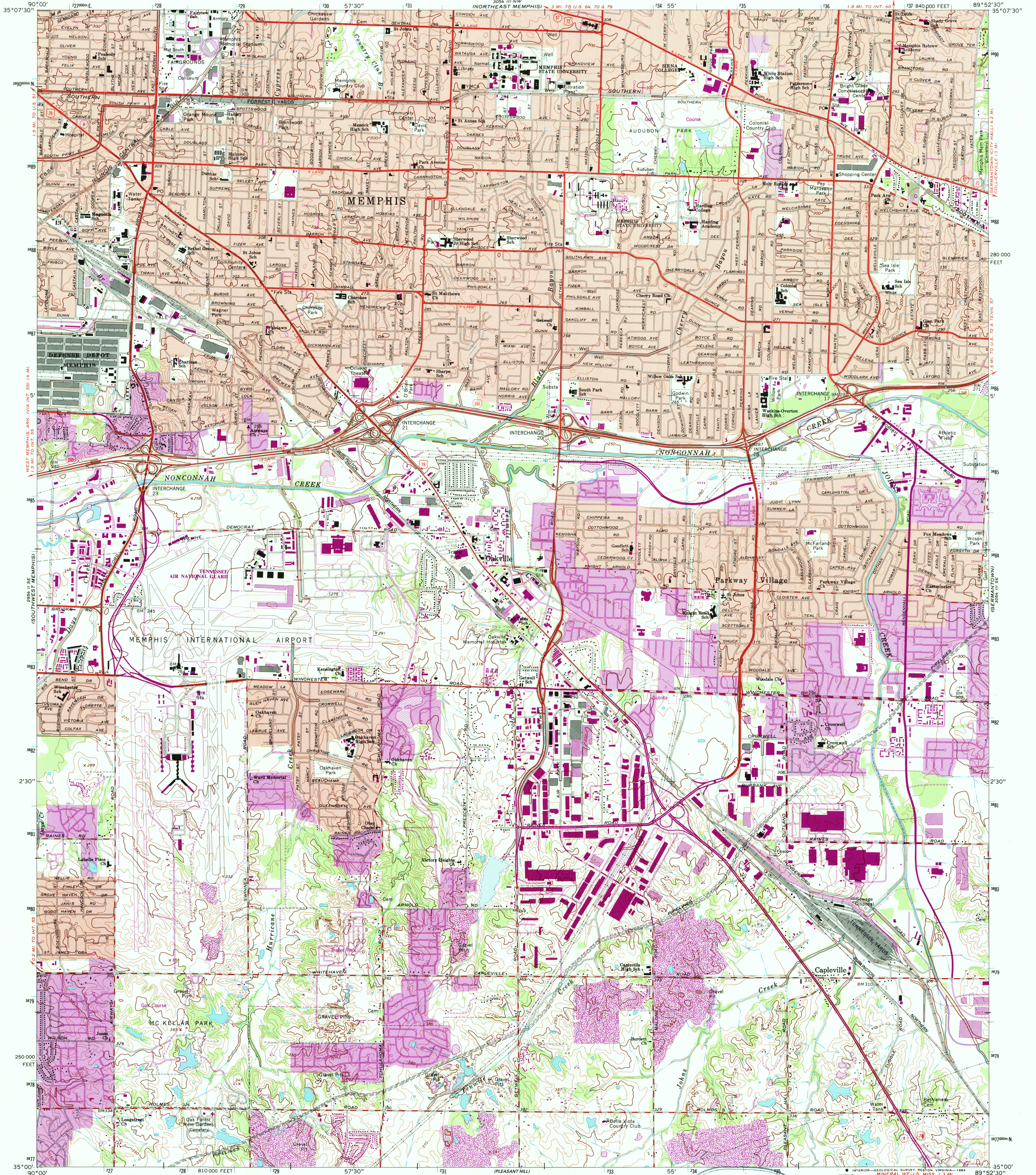


UNITED STATES  
DEPARTMENT OF THE INTERIOR  
GEOLOGICAL SURVEY

SOUTHEAST MEMPHIS QUADRANGLE  
TENNESSEE—SHELBY CO.  
7.5 MINUTE SERIES (TOPOGRAPHIC)  
SW/4 BARTLETT 15' QUADRANGLE



Mapped, edited, and published by the Geological Survey  
Control by USGS, NOS/NOAA, and USCE

Topography by photogrammetric methods from aerial  
photographs taken 1963. Field checked 1965  
Polyconic projection. 10,000-foot grid ticks based on  
Tennessee coordinate system.  
1000-meter Universal Transverse Mercator grid ticks, zone 16, shown in blue  
1927 North American Datum  
To place on the predicted North American Datum 1983  
move the projection lines 7 meters south and  
8 meters east as shown by dashed corner ticks  
Fine red dashed lines indicate selected fence and field lines where  
generally visible on aerial photographs. This information is unchecked  
Red tint indicates areas in which only landmark buildings are shown  
There may be private inholdings within the boundaries of the  
National or State reservations shown on this map

UTM GRID AND 1963 MAGNETIC NORTH  
DECLINATION AT CENTER OF SHEET

SCALE 1:24,000  
CONTOUR INTERVAL 10 FEET  
DOTTED LINES REPRESENT 5-FOOT CONTOURS  
NATIONAL GEODETIC VERTICAL DATUM OF 1929

USGS NMD HISTORICAL MAP  
AUG 29 1990  
REC'D FILE COPY

ROAD CLASSIFICATION  
Heavy-duty ——— Light-duty ———  
Medium-duty ——— Unimproved dirt ———  
Interstate Route U.S. Route State Route

SOUTHEAST MEMPHIS, TENN.  
SW/4 BARTLETT 15' QUADRANGLE  
35089-A8-TF-024  
1965  
PHOTOREVISED 1983  
DMA 3054 III SW—SERIES Y841

THIS MAP COMPLIES WITH NATIONAL MAP ACCURACY STANDARDS  
FOR SALE BY U.S. GEOLOGICAL SURVEY, DENVER, COLORADO 80225, OR RESTON, VIRGINIA 22092  
AND TENNESSEE DEPARTMENT OF CONSERVATION, DIVISION OF GEOLOGY, NASHVILLE, TENN. 37243  
A FOLDER DESCRIBING TOPOGRAPHIC MAPS AND SYMBOLS IS AVAILABLE ON REQUEST

Revisions shown in purple and woodland compiled from aerial  
photographs taken 1980 and other sources. This information  
not field checked. Map edited 1983  
Purple tint indicates extensions of urban areas