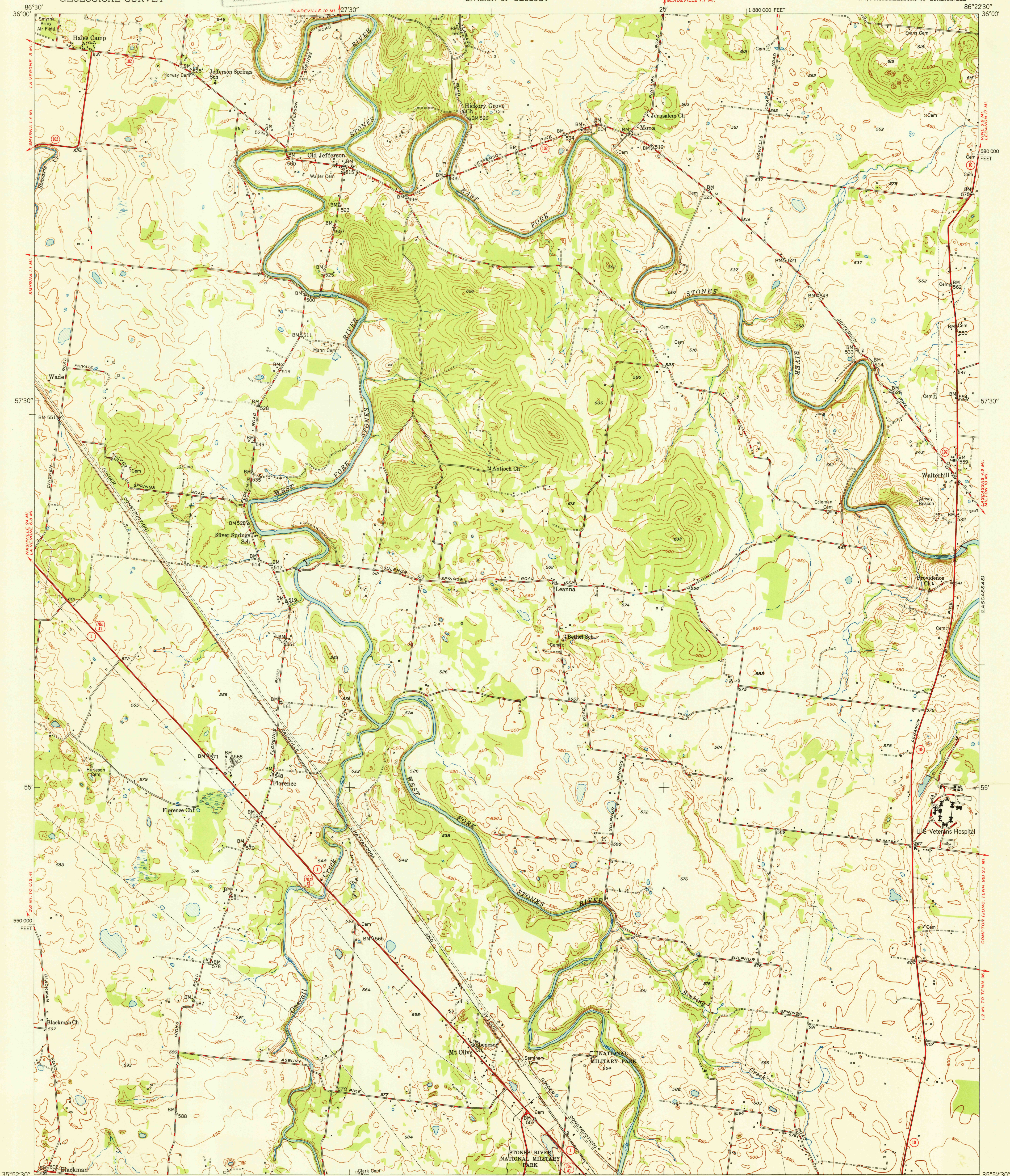
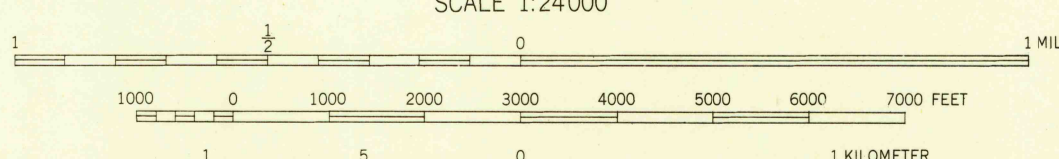


U.S.G.S.  
FILE COPY  
Inspection and Mapping



Maped by the Geological Survey and the Corps of Engineers  
Edited and published by the Geological Survey  
Control by USGS, USC&GS, USED, and TVA  
Culture and drainage in part compiled from aerial photographs  
Topography by multiplex methods 1944  
and plane-table surveys 1949-1950  
Polyconic projection, 1927 North American datum  
10,000-foot grid based on Tennessee coordinate system

TRUE NORTH  
APPROXIMATE MEAN  
DECLINATION, 1950



CONTOUR INTERVAL 10 FEET  
DATUM IS MEAN SEA LEVEL

THIS MAP COMPLIES WITH NATIONAL MAP ACCURACY STANDARDS  
FOR SALE BY U. S. GEOLOGICAL SURVEY, WASHINGTON 25, D. C.  
A FOLDER DESCRIBING TOPOGRAPHIC MAPS AND SYMBOLS IS AVAILABLE ON REQUEST

USGS  
HISTORICAL FILE  
TOPOGRAPHIC DIVISION

U.S.G.S.  
FILE COPY  
Inspection and Mapping

ROAD CLASSIFICATION  
HARD-SURFACE ALL WEATHER ROADS DRY WEATHER ROADS  
Heavy-duty 4 LANE 6 LANE Improved dirt  
Medium-duty 4 LANE 6 LANE Unimproved dirt  
Loose-surface, graded, or narrow hard-surface  
U. S. Route State Route

WALTERHILL, TENN.  
NW/4 MURFREESBORO 15' QUADRANGLE  
N 3652.5-W 8622.5/7.5  
EDITION OF 1950