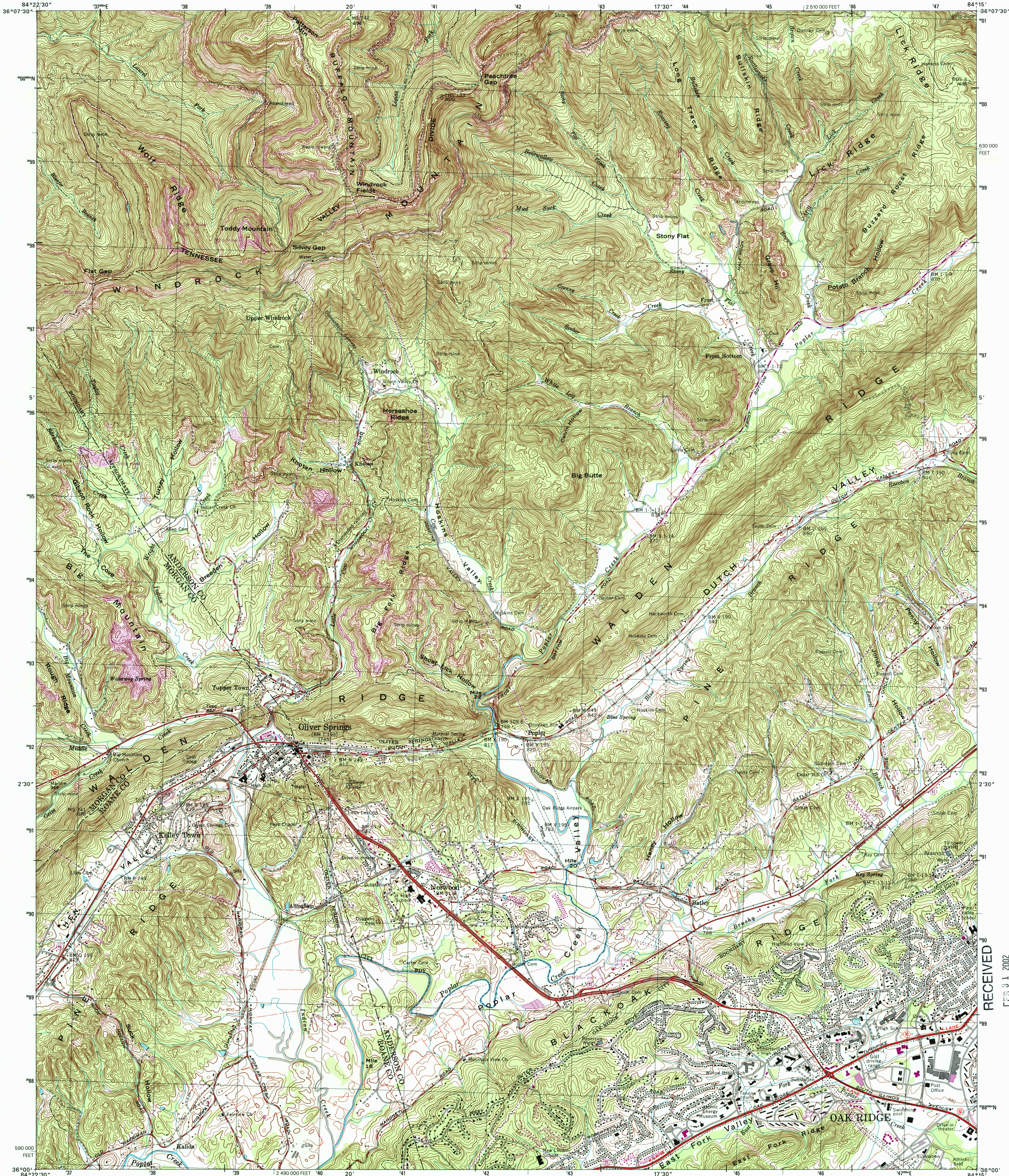


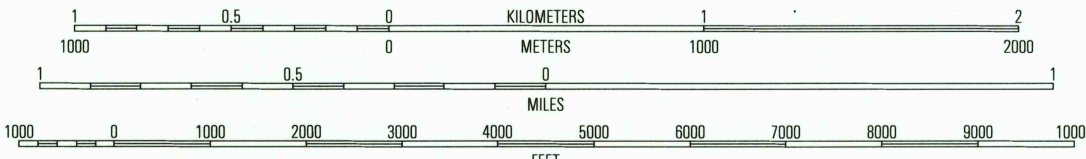
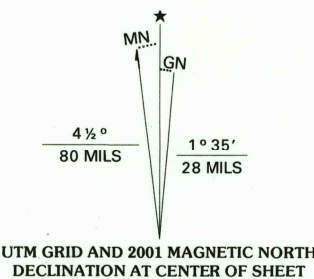


U.S. DEPARTMENT OF THE INTERIOR
U.S. GEOLOGICAL SURVEY

WINDROCK QUADRANGLE
TENNESSEE
7.5-MINUTE SERIES (TOPOGRAPHIC) 129-SE



Produced by the United States Geological Survey
Supplemental control by WPA and Tennessee Valley Authority
Topography compiled 1967. Field checked by TVA 1968
Planimetry derived by TVA from imagery taken 1975 and other
sources. Photoinspected using imagery taken 2000; no major
culture or drainage changes observed. Survey control current
as of 1968. Boundaries, other than corporate, verified 2001
North American Datum of 1927 (NAD 27). Projection and
10 000-foot ticks: Tennessee coordinate system
(Lambert conformal conic)
1000-meter Universal Transverse Mercator grid, zone 16
North American Datum of 1983 (NAD 83) is shown by dashed
corner ticks. The values of the shift between NAD 27 and NAD 83
for 7.5-minute intersections are obtainable from National Geodetic
Survey NADCON software
Information shown in purple may not meet USGS content standards
and may conflict with previously mapped contours



CONTOUR INTERVAL 20 FEET
NATIONAL GEODETIC VERTICAL DATUM OF 1929
TO CONVERT FROM FEET TO METERS, MULTIPLY BY 0.3048
THIS MAP COMPLIES WITH NATIONAL MAP ACCURACY STANDARDS
FOR SALE BY U.S. GEOLOGICAL SURVEY, P.O. BOX 25286, DENVER, COLORADO 80225
AND TENNESSEE DEPARTMENT OF CONSERVATION, DIVISION OF GEOLOGY,
NASHVILLE, TENNESSEE 37243
A FOLDER DESCRIBING TOPOGRAPHIC MAPS AND SYMBOLS IS AVAILABLE ON REQUEST



1	2	3
4	5	6
7	8	

ADJOINING 7.5' QUADRANGLE NAMES

ROAD CLASSIFICATION (TVA 129-SE)
Primary highway
hard surface
Secondary highway
hard surface
Light-duty road, hard or
improved surface
Unimproved road
Interstate Route
U.S. Route
State Route

WINDROCK, TN
2000

NIMA 4156 III SE-SERIES 841

RECEIVED

FEB 31 2002

USGS NWU
HISTORICAL MAP ARCHIVES

