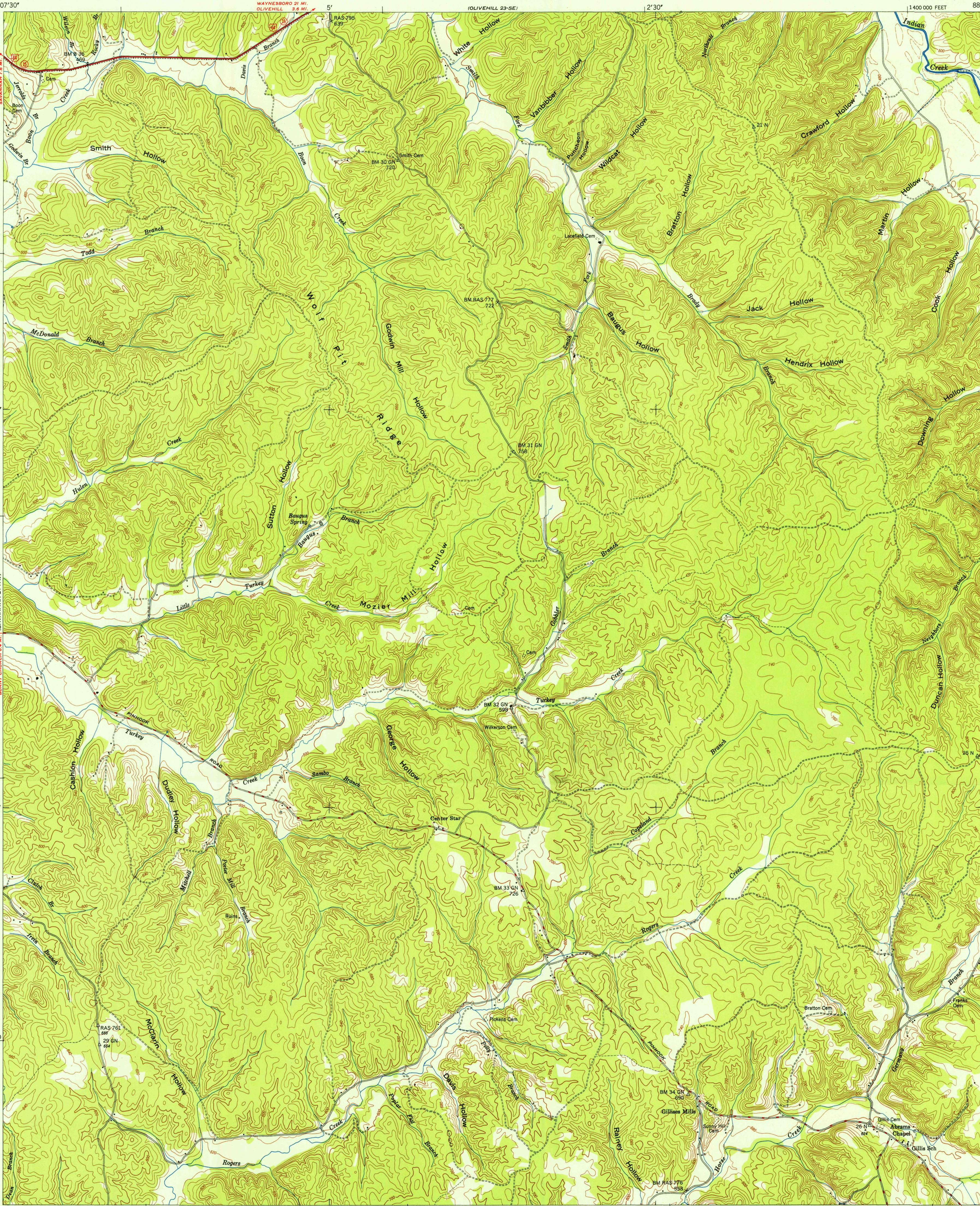


UNITED STATES
DEPARTMENT OF THE INTERIOR
GEOLOGICAL SURVEY

U.S.G.S.
FILE COPY
Inspection and Editing.

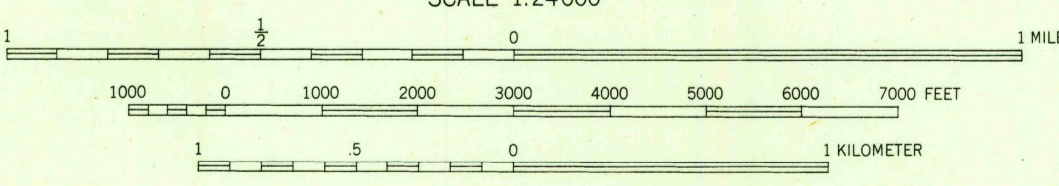
UNITED STATES
TENNESSEE VALLEY AUTHORITY
MAPS AND SURVEYS BRANCH

WOLF PIT RIDGE QUADRANGLE
TENNESSEE-HARDIN CO.
7.5 MINUTE SERIES (TOPOGRAPHIC) 24-NE



Mapped and edited by Tennessee Valley Authority
Published by the Geological Survey
Control by USC&GS, USGS, and TVA
Topography by USGS and TVA by multiplex methods from aerial
photographs taken 1947. Field examination by TVA, 1949
Polyconic projection. 1927 North American datum
10,000-foot grid based on Tennessee rectangular
coordinate system

TRUE NORTH
MAGNETIC NORTH
APPROXIMATE MEAN
DECLINATION 1949



CONTOUR INTERVAL 20 FEET
DASHED LINES REPRESENT HALF-INTERVAL CONTOURS
DATUM IS MEAN SEA LEVEL
THIS MAP COMPLIES WITH NATIONAL MAP ACCURACY STANDARDS
FOR SALE BY U. S. GEOLOGICAL SURVEY, WASHINGTON 25, D. C.
AND BY U. S. TENNESSEE VALLEY AUTHORITY, CHATTANOOGA OR KNOXVILLE, TENN.
A FOLDER DESCRIBING TOPOGRAPHIC MAPS AND SYMBOLS IS AVAILABLE ON REQUEST

USGS
HISTORICAL FILE
TOPOGRAPHIC DIVISION
U.S.G.S.
FILE COPY
Inspection and Editing.

ROAD CLASSIFICATION
HARD-SURFACE ALL WEATHER ROADS
Heavy-duty 1 LANE 18 LANE
Medium-duty 2 LANE 18 LANE
Loose-surface, graded, or narrow hard-surface 3 U. S. Route 4 State Route
DRY WEATHER ROADS
Improved dirt 5
Unimproved dirt 6

WOLF PIT RIDGE, TENN.
N3507.5-W8800/7.5
PRINTED 1952