

SELMER
TENNESSEE-ALABAMA

1:100,000-scale metric
topographic map



30 X 60 MINUTE QUADRANGLE
SHOWING

- Contours and elevations
in meters
- Highways, roads and other
manmade structures
- Water features
- Woodland areas
- Geographic names



1986
TENNESSEE VALLEY AUTHORITY

Produced by the Tennessee Valley Authority
in cooperation with the United States Geological Survey
Compiled from USGS-TVA 1:24 000-scale topographic maps
dated 1950-1984. Planimetry revised from aerial photographs
taken 1980-1985 and other source data. Revised information
not field checked. Map edited 1986.
1927 North American Datum (NAD 27). Projection and
10 000-meter grid: Universal Transverse Mercator, zone 16
25 000-foot ticks: Tennessee coordinate system.

The difference between NAD 27 and North American Datum of
1983 (NAD 83) is too small to show at this scale. The
values of the shift between the datums for 7.5 minute
intersections are given in USGS Bulletin 1875.

There may be private inholdings within the boundaries of
the National or State reservations shown on this map.

CONTOUR INTERVAL 20 METERS
NATIONAL GEODETIC VERTICAL DATUM OF
ELEVATIONS SHOWN TO THE NEAREST METER

THIS MAP COMPLIES WITH NATIONAL MAP ACCURACY STANDARDS

CONVERSION TABLE		DECLINATION DIAGRAM	ADJOINING MAPS			
Meters	Feet		1	2	3	
1	3.2808		1	2	3	
2	6.5617		4	5	6	
3	9.8425		7	8		
4	13.1234					
5	16.4042					
6	19.6850					
7	22.9659					
8	26.2467					
9	29.5276					
10	32.8084					
To convert meters to feet multiply by 3.2808						
To convert feet to meters multiply by 0.3048						

- 1 Blytheville
- 2 Milan
- 3 Hohenwald
- 4 Memphis East
- 5 Lawrenceburg
- 6 Holly Springs
- 7 Corinth
- 8 Tusculum

RECEIVED

MAR 31 1999



USGS NMD

HISTORICAL MAP ARCHIVES

Topographic Map Symbols

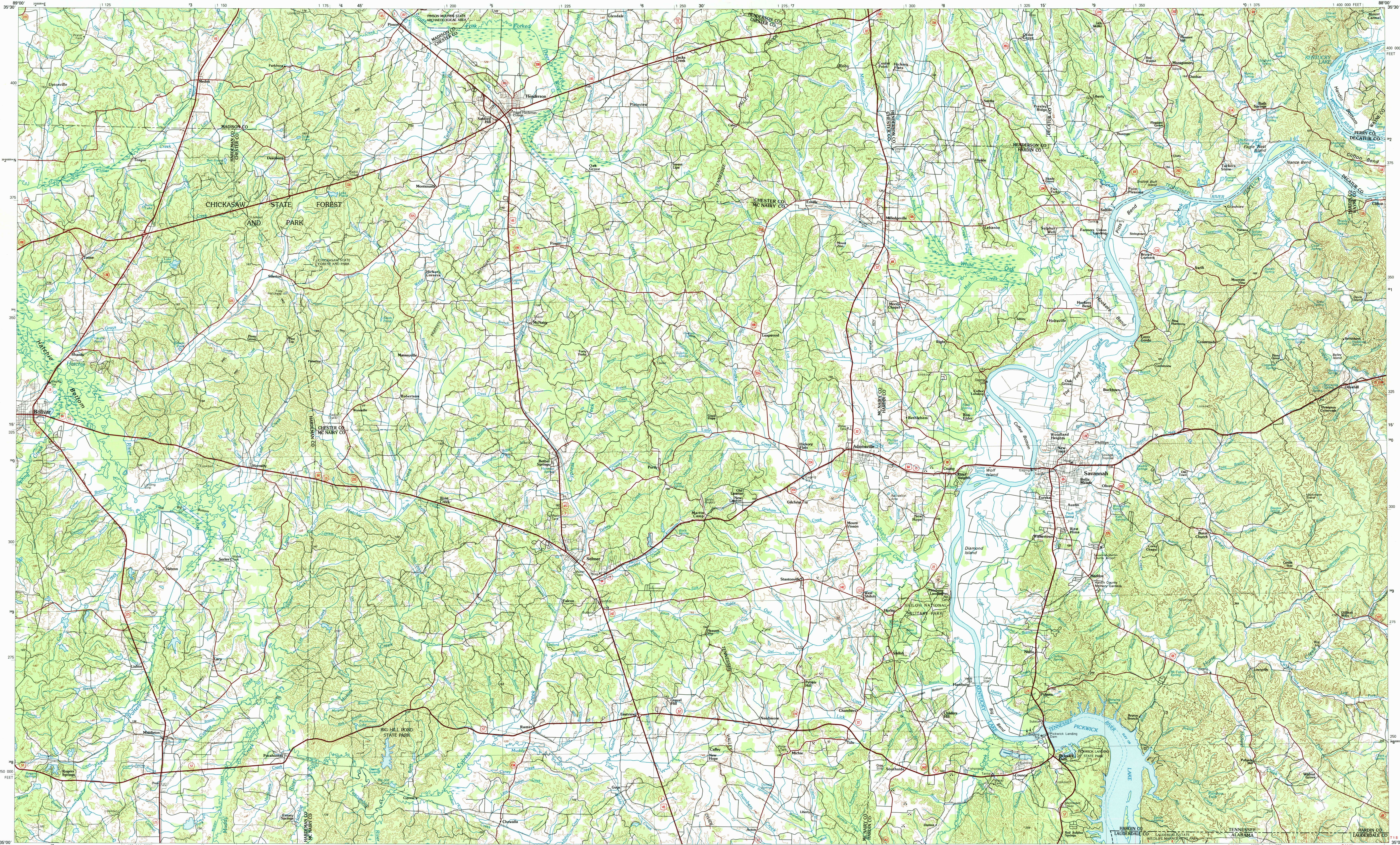
- Primary highway, hard surface
- Secondary highway, hard surface
- Light duty road, principal street, hard or improved surface
- Other road or street, trail
- Route marker, intersection, U. S. State
- Railroad, standard gage, narrow gage
- Bridge, overpass, underpass
- Tunnel, road, railroad
- Built up area, locality, elevation
- Airport, landing field, landing strip
- National boundary
- State boundary
- County boundary
- National or State reservation boundary
- Land grant boundary
- U. S. public lands survey, range, township, section
- Range, township, section line, protracted
- Power transmission line, pipeline
- Dam, dam with lock
- Cemetery, building
- Windmill, water well, spring
- Mine shaft, adit or cave, mine, quarry, gravel pit
- Campground, picnic area, U. S. location monument
- Ruin, cliff dwelling
- Disturbed surface, strip mine, lava, sand
- Contours, index, intermediate, supplementary
- Bathymetric contours, index, intermediate
- Stream, lake, perennial, intermittent
- Rapids, large and small, falls, large and small
- Area to be submerged, marsh, wetland
- Land subject to controlled inundation, woodland
- Scrub, mangrove
- Orchard, vineyard

A pamphlet describing topographic maps is available on request

FOR SALE BY U.S. GEOLOGICAL SURVEY, P.O. BOX 25286,
DENVER, COLORADO 80225.
TENNESSEE DEPARTMENT OF CONSERVATION, DIVISION OF GEOLOGY,
NASHVILLE, TENNESSEE 37243, AND
U.S. TENNESSEE VALLEY AUTHORITY, CHATTANOOGA, TENNESSEE 37402

SELMER, TENNESSEE-ALABAMA
35088-E1-TM-100

1986



SCALE 1:100 000

1 CENTIMETER ON THE MAP REPRESENTS 1 KILOMETER ON THE GROUND

CONTOUR INTERVAL 20 METERS

KILOMETERS

1 0 1 2 3 4 5 6 7 8 9 10 11 12 13 14 15 16 17 18 19 20

MILES

1 0 1 2 3 4 5 6 7 8 9 10 11 12 13 14 15 16 17 18 19 20

INTERIOR- GEOLOGICAL SURVEY, RESTON, VIRGINIA-1983