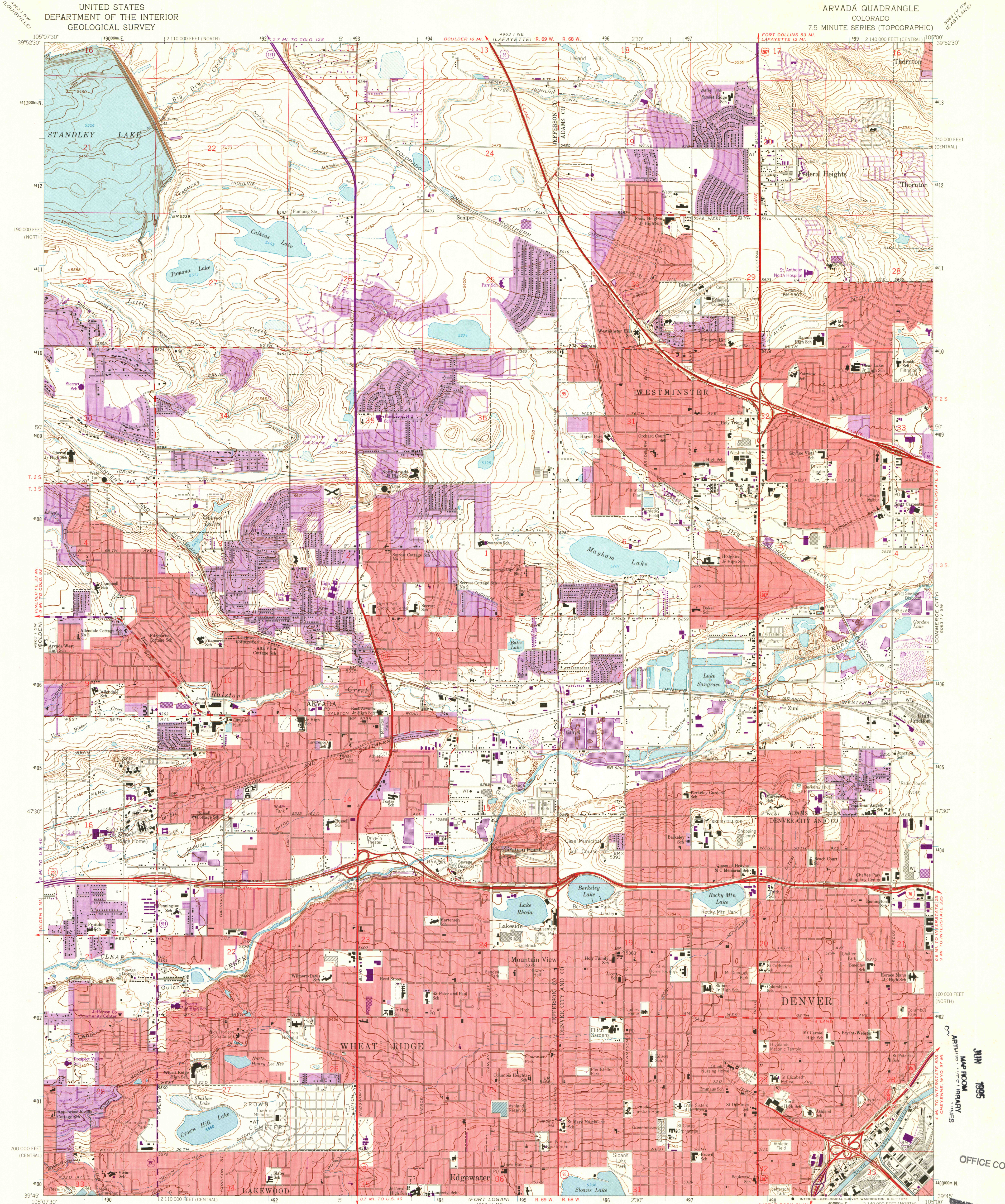


UNITED STATES
DEPARTMENT OF THE INTERIOR
GEOLOGICAL SURVEY

ARVADA QUADRANGLE
COLORADO
7.5 MINUTE SERIES (TOPOGRAPHIC)



Mapped, edited, and published by the Geological Survey

Control by USGS and USC&GS

Topography by photogrammetric methods from aerial photographs
taken 1964. Field checked 1965. Supersedes map dated 1957

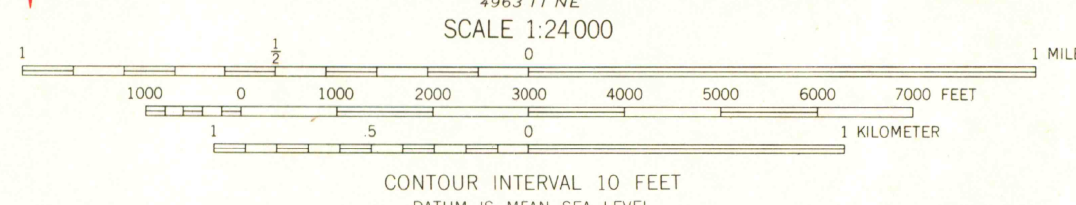
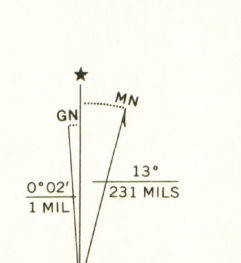
Polyconic projection. 1927 North American datum
10,000-foot grids based on Colorado coordinate system, central
and north zones

1000-meter Universal Transverse Mercator grid ticks,
zone 13, shown in blue

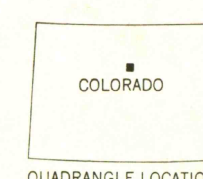
Red tint indicates areas in which only landmark buildings are shown
Fine red dashed lines indicate selected fence lines

Revisions shown in purple compiled from aerial photographs
taken 1971. This information not field checked

Purple tint indicates extension of urban areas



THIS MAP COMPLIES WITH NATIONAL MAP ACCURACY STANDARDS
FOR SALE BY U.S. GEOLOGICAL SURVEY, DENVER, COLORADO 80225, OR WASHINGTON, D. C. 20242
A FOLDER DESCRIBING TOPOGRAPHIC MAPS AND SYMBOLS IS AVAILABLE ON REQUEST



ROAD CLASSIFICATION
Heavy-duty ——— Light-duty ———
Medium-duty ——— Unimproved dirt ———
Interstate Route U.S. Route State Route

ARVADA, COLO.
N3945-105000/7.5

1965
PHOTOREVISED 1971
AMS 4963, 1 SE-SERIES V877



w/o C1