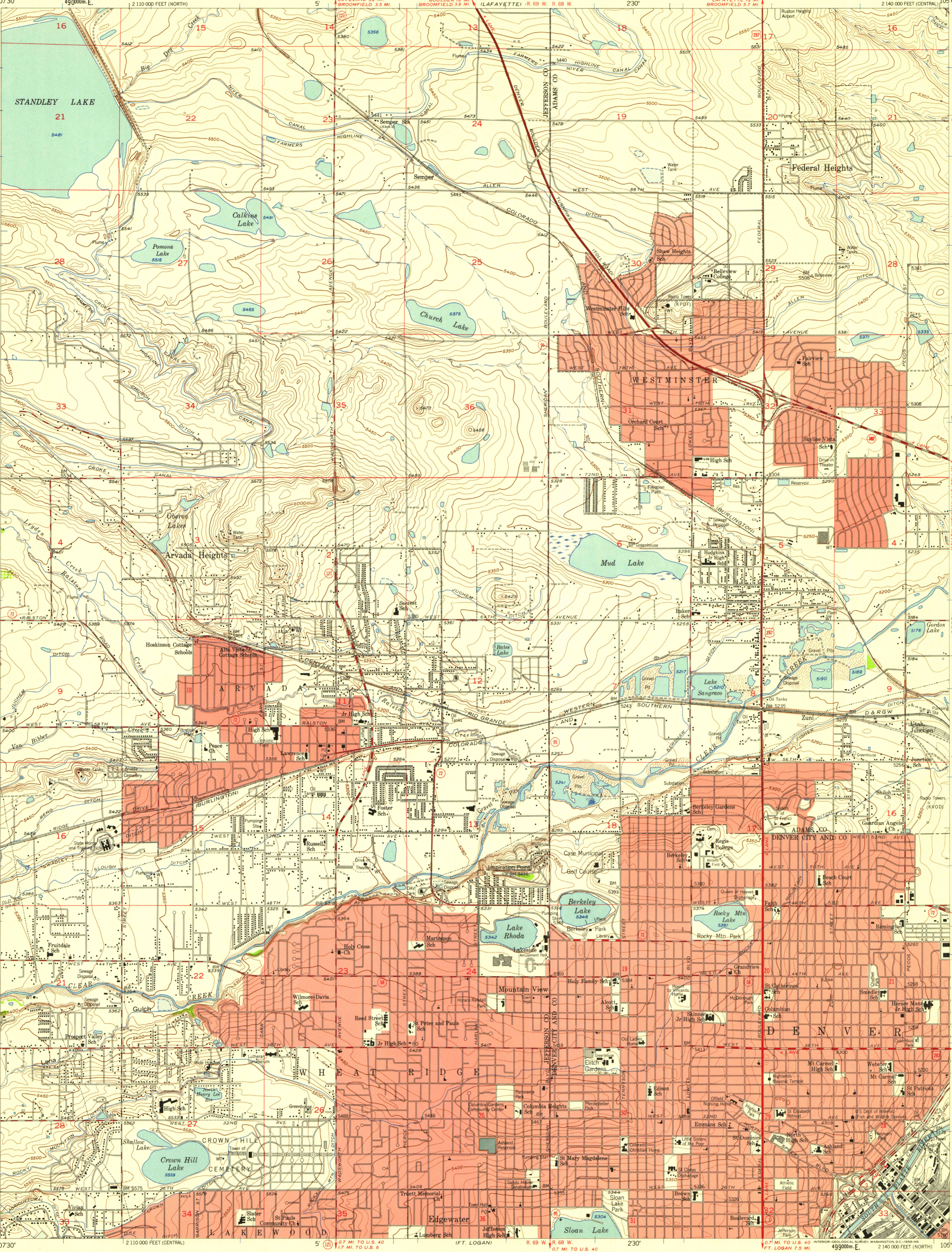


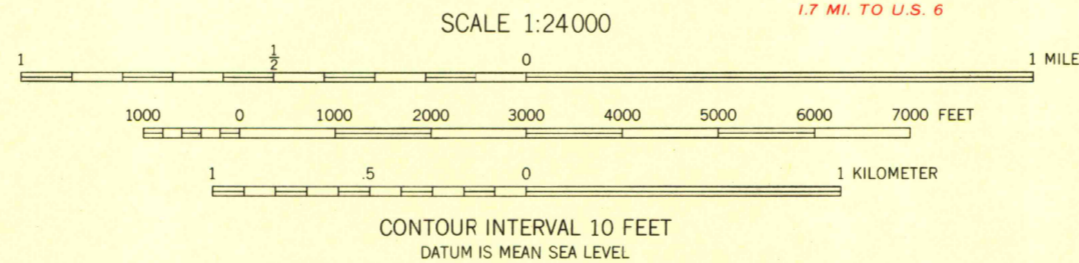
UNITED STATES
DEPARTMENT OF THE INTERIOR
GEOLOGICAL SURVEY

ARVADA QUADRANGLE
COLORADO
7.5 MINUTE SERIES (TOPOGRAPHIC)

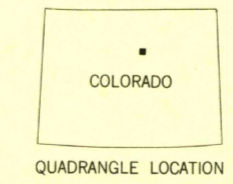


Maped, edited, and published by the Geological Survey
Control by USGS and USC&GS
Culture and drainage in part compiled from aerial photographs
taken 1954. Topography by planetable surveys 1937, revised 1957
Polyconic projection. 1927 North American datum
10,000-foot grid based on Colorado coordinate system,
central and north zones
1000-meter Universal Transverse Mercator grid ticks,
zone 13, shown in blue
Red tint indicates areas in which only
landmark buildings are shown

14°
TRUE NORTH
MAGNETIC NORTH
APPROXIMATE MEAN
DECLINATION, 1957



ROAD CLASSIFICATION
Heavy-duty ——— Light-duty ———
Medium-duty ——— Unimproved dirt ———
U.S. Route ——— State Route ———
LIBRARY USE ONLY



THIS MAP COMPLIES WITH NATIONAL MAP ACCURACY STANDARDS
FOR SALE BY U.S. GEOLOGICAL SURVEY, DENVER 2, COLORADO OR WASHINGTON 25, D.C.
A FOLDER DESCRIBING TOPOGRAPHIC MAPS AND SYMBOLS IS AVAILABLE ON REQUEST

ARVADA, COLO.
N3945—W10500/7.5

1957

